

National Tropical Botanical Garden

Annual Report 2016





ON THE COVER: *EUPHORBIA ELEANORIAE* WAS DISCOVERED IN 1991 AND DESCRIBED AND NAMED BY DAVID LORENCE AND WARREN WAGNER IN 1996. ENDEMIC TO THE ISLAND OF KAUAI, IT WAS NAMED FOR ELEANOR CRUM, A FORMER NTBG TRUSTEE AND STAUNCH SUPPORTER OF BOTANICAL RESEARCH. PHOTO BY KEN WOOD



Message from Thomas D. Hewitt

Aloha from the headquarters of the National Tropical Botanical Garden (NTBG), perched on a cliff overlooking the breathtaking Lawa'i Valley on the island of Kaua'i, Hawai'i.

I often ask people what energizes, excites and consequently galvanizes them to action benefiting tropical plant conservation. The letters EEG also form an acronym for a test of brain activity. I can speak from personal experience that my brain activity reaches a peak when I visit the magnificent gardens of the National Tropical Botanical Garden.

I speak of Gardens in the plural because we have three gardens on Kaua'i, one on Maui, and one in Miami, our beautiful garden in Florida, that was once the home of renowned plant explorer Dr. David Fairchild. Each of these amazing gardens is unique and special and is much more than a collection of ornamental plants. Our gardens conserve our living collection of endangered tropical plant species. It is where we grow endangered tropical plants to re-establish populations in the wild. It is where scientists from around the world come to study tropical plant diversity and this is where our visitors learn about the fundamental importance of plants, tropical plant conservation, and plant research that may reveal the next cancer drug or, as in the case of breadfruit, help alleviate hunger.

I hope that you will visit us on Kaua'i, Maui, and in Florida, where you will experience the sensory bonanza that makes my brain activity soar. Thank you for your support of tropical plant conservation and the National Tropical Botanical Garden.

Mahalo nui loa,

Tom Hewitt, Chairman of the Board of Trustees

Tom Hewitt



Message from Chipper Wichman

The year 2016 was a monumental one for conservation globally as the World Conservation Congress (WCC) of the International Union for Conservation of Nature (IUCN) convened in Hawai'i. With over 10,000 delegates from 192 countries, it was the largest and most diverse conservation meeting the world has ever seen. NTBG proudly led the eight-year effort to bring the WCC to the United States for the first time in the IUCN's 68 year history and watching it unfold over ten days in September was phenomenal. Hawai'i was the ideal place to host this global event because of the incredible biodiversity that exists here as well as the vibrant indigenous Hawaiian culture that is a foundation for much of the conservation work across the Hawaiian Islands.

The world has come to recognize that the most successful conservation efforts are those that conserve both biodiversity and indigenous cultures while employing traditional cultural knowledge. As a result the term "biocultural conservation" became mainstream at the 2016 WCC and was repeated by both keynote speakers as well as delegates from every corner of our planet.

For the past 20 years, NTBG has been the 'tip of the spear' in biocultural conservation in Hawai'i where we have grown one of the most celebrated and successful community-based biocultural conservation programs in the state at Limahuli Garden and Preserve on the north shore of Kaua'i. The conservation work we do at Limahuli takes us from the very top of the watershed at 3,330 feet into a cloud forest all the way down to sea level and out to a nearshore fishery. That fishery was the first in Hawai'i to be given the state's Community Based Subsistence Fishery Area designation. Underpinning this integrated resource management program is a robust understanding of both scientific and traditional cultural knowledge, which informs our activities and drives our goals and management objectives.

This biocultural conservation philosophy is not only limited to Limahuli. It also drives our programs and sparks change at Kahanu Garden and Preserve on Maui, where we manage some of the most important cultural sites in Hawai'i, as well as at McBryde Garden on the South Shore of Kaua'i, where we grow the majority of our rare and endangered plants.

Being the tip of the spear means we have to continue to innovate and change, so we are fortunate to have some of the most talented and dedicated employees working to help us fulfill these goals every day. As you read this 2016 Annual Report, I believe you will get a glimpse of their passion and commitment that ultimately drives our success as an organization.

Chipper Wichman, President, Director, and Chief Executive Officer

Introduction

Aloha! Welcome to our Annual Report where we invite you to join us as we highlight some of our many achievements in 2016, a most exciting and dynamic year for our organization. Here you can learn about our five garden locations in Hawai'i and Florida as well as the preserves we manage and programs we operate. From science, conservation, discovery, and education, to our stunning tropical living collections, our public outreach efforts, and critical work collecting rare and endangered plants and preserving plant DNA, the National Tropical Botanical Garden continues to be a leader in tropical botany, rough terrain field exploration, scientific research, and education related to plant sciences.

Within this Annual Report you will also find the names of our many dedicated supporters and partners, from our deeply committed Board of Trustees, Council of Fellows and members to our generous donors and volunteers who all play a vital role in helping us fulfill our mission. This report also shares key financial data that reflects our organization's fiscal activities and assets as well as updates on the Garden's many activities, initiatives, and partnerships.

At the National Tropical Botanical Garden we are wholly committed to saving plants whether it's exploring steep cliffs, botanizing in rugged valleys, or collecting seeds in the forests of remote Pacific islands. NTBG also places great value on our partnerships, collaborations, and relationships with other like-minded organizations and the communities in which we live and work. In these pages you will find a summary of the educational workshops and classes, public tours and other activities we offer in our five gardens.

Saving plants is at the very core of our mission and each of us recognizes the central role that plants play in our world. We recognize that no matter who we are or where we call home, each of us, like all other living creatures on Earth, needs plants. As a non-profit organization and the first and only botanical garden to have been chartered by the United States Congress, we rely on your enthusiastic support for helping us continue to save plants.

With heartfelt appreciation, we offer you our gratitude.



IUCN World Conservation Congress

In September 2016, the International Union for Conservation of Nature (IUCN) held its quadrennial World Conservation Congress (WCC) in Hawai'i. It was the first time in its 68-year history that the WCC was hosted by the United States. What began in 2008 as a dream for NTBG Director and CEO Chipper Wichman and several partners, evolved from the realm of impossible to being a long shot and then finally inevitable.

Throughout this incredible journey, Chipper played a central role in Hawai'i's unlikely bid to host the world's largest conservation gathering. As co-chair of Hawai'i's WCC Steering Committee, Chipper strived to maximize this once-in-a-lifetime chance for NTBG, Hawai'i, and the United States to engage with the conservation community on a global scale.

The 2016 World Conservation Congress, Planet at a Crossroads, opened on September 1 in Honolulu with much excitement and anticipation following President Barack Obama's announcement that he was quadrupling the size of the Papahānaumokuākea Marine National Monument in the Northwestern Hawaiian Islands, making it the largest marine protected area in the world.



The opening ceremony was attended by thousands of delegates from scores of countries around the world, along with foreign dignitaries and heads of state, as well as U.S. federal agencies like the National Park Service. Also in attendance were U.S. Secretary of the Interior Sally Jewel, Hawai‘i’s U.S. Senator Brian Schatz, Hawai‘i Governor David Ige, and thousands of scientists, academics, indigenous and cultural practitioners, and conservation leaders.

What followed was the most diverse and best attended Congress in IUCN history, bringing together more than 10,000 delegates representing governments, civil society, indigenous communities, spiritual leaders, the private sector, and academia for ten days of symposia, meetings, workshops, discussions, and exchanges.

An important component of Hawai‘i’s Congress was the recognition, celebration, and discussion of the vital role of indigenous knowledge in conservation. That recognition of the value of biocultural conservation was evident from the prominent role of Hawaiian culture throughout the Congress, meetings and discussions centered on indigenous perspectives, motions passed in support of indigenous people and sacred places, and the large number of indigenous delegates from around the world.

Among the many globally transformative outcomes of the 2016 WCC was a document called “The Hawai‘i Commitments,” which was intended to identify challenges and solutions related to core conservation issues including climate change, habitat loss, wildlife trafficking, and environmental degradation and pollution.

The Commitments came on the heels of the Paris Agreement, the UN Sustainable Development Goals, and other international charters adopted in a spirit of cooperation and partnership, with the goal of advancing conservation and protecting life on the planet.



2016 IUCN World Conservation Congress by the Numbers

1948

First IUCN WCC held in Fontainebleau, France

2016

First-ever WCC hosted by the United States held in Hawai'i (Sept. 1-10)

8

Number of years NTBG campaigned to host the WCC in Hawaii

28,000

Native plants & animals in Hawaii

90%

Endemic Hawaii plants & animals

192

Countries represented at 2016 WCC in Hawaii

28%

of all threatened and endangered species in the U.S. found only in Hawai'i

27

NTBG staff in attendance at WCC

10,300

Delegates from around the world

30%

of Hawai'i's highest priority watershed to be protected by 2030

200

NTBG Donors, Fellows, and VIPs in attendance at WCC

106

Resolutions passed by IUCN Members' Assembly

30%

of Hawai'i's marine resources to be effectively managed by 2030



Science and Conservation

Science and Conservation are at the heart of the NTBG’s mission “to enrich life through discovery, scientific research, conservation, and education...” Among the Science and Conservation (Sci-Con) Department’s most vital roles is the discovery of new plant species and publication of these discoveries. In 2016 Sci-Con staff published descriptions for two new Hawaiian plant taxa discovered by our field staff: *Coprosma kawaikiniensis*, a rare tree in the Rubiaceae (coffee family) endemic to the island of Kaua‘i, and *Melicope oppenheimeri*, a rare tree in the Rutaceae (citrus family) endemic to East Maui. Both species are localized and listed as Critically Endangered by the IUCN Red List of Threatened Species.



Our herbarium continues to grow and now holds 79,647 specimens.

In 2016, Sci-Con department staff also rediscovered *Lysimachia scopulensis*, a member of the Primulaceae (primrose) family, endemic to Kaua'i, that had not been observed since 1998. Since its rediscovery, we have successfully cultivated this single island endemic at our Conservation and Horticulture Center.

In addition to our Hawai'i fieldwork, three NTBG staff — Director of Science and Conservation Dr. David Lorence, Field Biologist Ken Wood, and Herbarium Manager Tim Flynn — took part in a six-week expedition to Samoa. Sci-Con staff botanized in under-explored areas on 'Upolu and Savai'i islands. During the expedition, team members rediscovered populations of two rare species: a member of the hibiscus family, *Abutilon whistleri*, not seen since 1971, and a rare fern, *Botrychium daucifolium*, last seen in the 1890s.

The NTBG team worked with collaborators from the Samoan Ministry of Natural Resources and Environment and collected 877 vascular and non-vascular plants (2,631 total herbarium specimens including duplicates), which were sent to our herbarium for processing, identification, study, and eventual distribution to other institutions. The specimens and information will contribute to completion of the Flora of Samoa project being written by Senior McBryde Research Fellow Dr. W. Arthur Whistler.

In 2016 Sci-Con staff also attended the American Public Gardens Association meetings in Miami where Dr. Lorence organized and moderated a

60-minute IUCN Red Listing panel session with collaborators, while Conservation Biologist Seana Walsh gave a panel session presentation.

In September, Sci-Con staff participated in the IUCN World Conservation Congress in Honolulu where they co-organized and moderated, talks, presentations, and an eight-hour session on Red Listing with IUCN staff, Red List trainers, and colleagues. On Kaua'i, Science and Conservation Specialist Margaret Clark played an instrumental role in the planning of the Kaua'i Conservation Expo and Expeditions that followed the WCC. Sci-Con staff were stationed at our booth during this post-Congress expo, interacting with participants and sharing our work.

Our herbarium continues to grow and now holds 79,647 specimens. The majority of specimens acquired in 2016 were collected by our staff in Samoa, with the remainder from Hawai'i and as gifts received for identification or on exchange.

Finally, in 2016, *The Flora of the Cook Islands* by New Zealand botanist W. R. "Bill" Sykes was published jointly by NTBG, the Smithsonian Institution, and Landcare Research (New Zealand) with funding from the International Association for Plant Taxonomy (IAPT). NTBG also published Volume 15 of our in-house journal *Allertonia*, titled "Tales of the Solomons" by the late Prof. E.J.H. Corner.





Living Collections and Horticulture

As a botanical garden, NTBG's work includes the development, curation, and management of our living collections. A central component of this is the ability to record, inventory, and monitor the number, type, and location of all the plants and plant material we grow. When combined, in 2016 we produced 10,995 plantouts (plants grown by NTBG and planted outside our main nursery) for our five garden locations, preserves, and restorations. This was nearly 4,000 more plants than in 2015.

NTBG's nursery inventory surpassed 1.3 million plants and started seeds by the end of 2016.

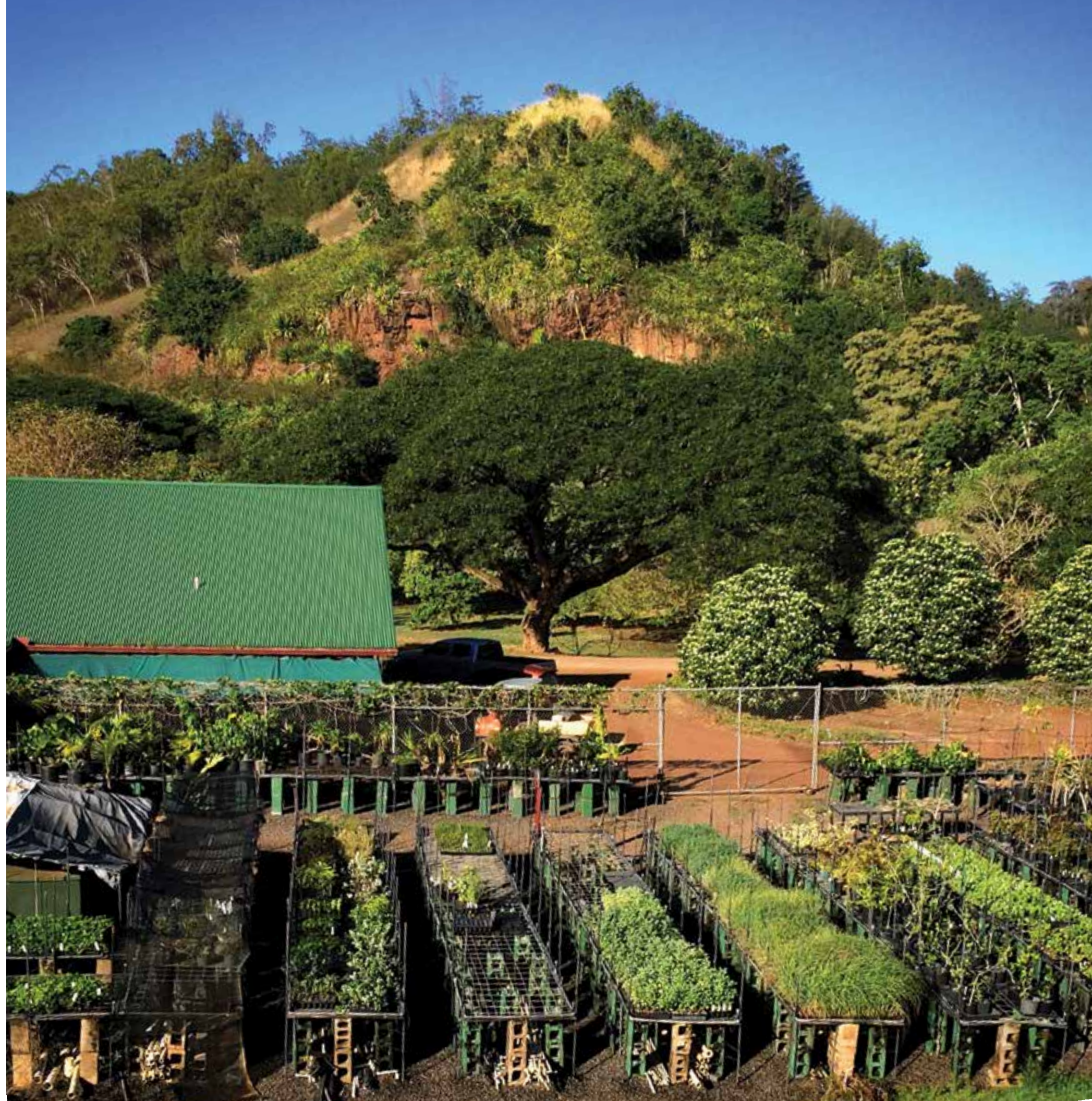
In 2016, NTBG produced 18,652 plants to be used by conservation partners in state programs, research, education, and other restoration projects, or for outreach efforts like the Arbor Day plant giveaway. Of those, nearly 2,500 of them were federally listed as threatened or endangered. In total, NTBG's nursery inventory surpassed 1.3 million plants and started seeds by the end of 2016.

As part of our ongoing efforts to ensure the accuracy and integrity of our plant records and related documentation, we undertook several large projects that reviewed and updated our living collections records.

Among the most significant of our Living Collections efforts was a Trustee-supported palm curation project undertaken by NTBG staff and the renowned palm authority Dr. John Dransfield. Working together, they verified 277 palm species representing 2,346 trees in the living collections. ID tags were inspected, missing tags were replaced, and vital plant records (some 30 years old) were updated. Like the palm project, NTBG's cycad curation project also made progress with new and updated plant ID tags and records expanded.

With conservation at the core of our mission, collecting and growing rare and endangered plants – especially native species – is vital for our living collections. In 2016 we made important progress on collecting and growing *Polyscias bisattenuata* and *Alectryon macrococcus* ssp. *micrococcus*. Both trees are endemic to Kaua'i and wild populations are in danger of collapsing. In the case of *Alectryon*, air layers were set on sterile trees.

Polyscias work involved bagging immature fruit in the wild in order to avoid rat predation. Field staff made multiple visits to the roughly 40 known remaining wild trees to gather fruit that has produced over 6,000 seedlings. NTBG will establish ex situ collections in our four Hawai'i gardens while also collaborating with private land owners. We are also cooperating with state agencies to establish in situ ("in the wild") populations.





Breadfruit Institute

Established in 2003, the Breadfruit Institute promotes the conservation, study, and use of breadfruit for food and reforestation. The Institute is the global leader in efforts to conserve and use breadfruit diversity to support regenerative agriculture, agroforestry, food security, and income generation for smallholder farmers in the tropics. The Institute manages the world's largest repository of breadfruit diversity with more than 150 varieties, including some that are rare or extinct in their homelands.

In 2016, Breadfruit Institute staff made significant advances in managing and curating the 350 breadfruit trees at Kahanu Garden and McBryde Garden. Dan Rudoy, the institute's Collection Manager, a specialist in organic, holistic, and regenerative farming practices, began using regenerative practices intended to substantially enhance the health and vitality of the collection. On Kaua'i, the McBryde Garden Breadfruit Research Orchard underwent a detailed assessment followed by the implementation of management strategies and measures to promote the health and stability of the trees.

In 2016, nineteen countries received 29,000 breadfruit trees through the institute's Global Hunger Initiative.

The Breadfruit Institute is based in Hawai'i, but its impact is felt around the world. In 2016, 19 countries received 29,000 breadfruit trees through the institute's Global Hunger Initiative, with nearly 1,000 trees distributed in Hawai'i. Six countries—Cuba, Grenada, Guyana, Suriname, Uganda, and Vietnam—received trees for the first time. This initiative was launched in 2009 in partnership with Cultivaris, LLC (Global Breadfruit) to respond to critical global food security issues by expanding plantings of elite breadfruit varieties in tropical regions. Close to 100,000 trees have been sent to 43 countries.

A signature aspect of the initiative is recognizing indigenous rights and supporting conservation of breadfruit diversity through benefit-sharing agreements. NTBG receives a royalty for trees sold by Global Breadfruit and shares that royalty 50/50 with the country of origin. In October 2016, a second Memorandum of Understanding was formally signed by Samoa's Prime Minister.

Our Director of Global Initiatives, Roger Still, is forging new relationships with hunger-relief and conservation partners in Hawai'i, West Africa, and the Caribbean that will expand the use of breadfruit across the tropics as an integral part of regenerative agriculture systems.

In addition to the Global Hunger Initiative, over 10,000 breadfruit trees were distributed 2012–2015 throughout Hawai'i through our Plant a

Tree of Life – Grow 'Ulu project. Marin Lysák, a Ph.D. Fellow at the University of Copenhagen, is researching options for adapting to the negative effects of climate change for food and nutrition security by increasing crop diversity with breadfruit. She continues to work closely with the Institute.

We are also discussing how to further maximize breadfruit's full potential through ongoing discussions with the Ulupono Initiative and Patagonia Provisions on projects involving breadfruit agroforestry certification standards, demonstration plantings in the McBryde Garden, and more.

Beyond the Garden, institute staff participated in the International Union for the Conservation of Nature's World Conservation Congress, starting on Maui at the Indigenous Crops Biodiversity Festival and continuing with the Congress on O'ahu, and the Kaua'i Conservation Expo. Staff also participated in the Global Breadfruit Summit on O'ahu and the Hawai'i Tropical Fruit Growers Association Annual meeting on Kaua'i.

In 2016, the institute's Director, Dr. Diane Ragone, was awarded the Garden Club of America's Medal of Honor for her outstanding service to horticulture and breadfruit. "Her work is in every sense the epitome of the best in horticulture: quest for knowledge, preservation, conservation, research, creative experimentation, sharing, mentoring and fulfilling a humanitarian mission," said the GCA in honoring Ragone for her work with the institute.





Education

For more than half a century, education has been at the forefront of NTBG's work and is central to our mission. Making use of our five gardens, preserves, and facilities like our Conservation and Horticulture Center and Botanical Research Center, as well as our staff and partners, NTBG has the capacity to instruct, inform, and inspire a broad range of people, from young children to world class researchers.

One of our education goals is for every student in each of our local communities on Kauai to visit NTBG. And while our formal education programs served more than 2,500 K-12 students in 2016, we also provided plant- and science-based education to students at every level and age, from primary and secondary to undergraduate through postgraduate, as well as interns, medical professionals, journalists, artists, garden enthusiasts, science teachers and educators of all type, and members of the general public.



NTBG embraces the concept of “garden as classroom,” and makes maximum use of its indoor resources and outdoor living collections as the basis for educational programs that are aligned with Hawai‘i’s Department of Education standards. In recognition of the importance of STEM (science, technology, engineering, and math) education, NTBG offers learning opportunities in botany, horticulture, and the natural sciences.

Summer and after-school programs like Keiki o ka ‘Āina Youth Enrichment on Kaua‘i, Kūlia I Ka Pono on Maui, and the Barnyard enrichment program at The Kampong in Florida, as well as other classes conducted in our gardens, served over 1,600 students in 2016.

Beyond following the traditional student-teacher paradigm, we make use of our staff, interns, and outside partners and experts to leverage the full potential of our collections, resources, experience, and expertise. By imparting knowledge to teachers, professors, journalists, artists, or conservation

professionals, we achieve our goals when they “teach it forward” through their own lessons, articles, and reports, or through the art they exhibit, broadening our reach beyond what would be otherwise possible.

One thing that makes NTBG special is the fact that students, educators, and researchers can study preserved plant specimens in our herbarium, consult our library and reference materials, and then immediately step outdoors and physically interact with and observe the same plants in our living collections. This combination of preserved, published, and planted assets increases our educational potential exponentially, making NTBG a valued resource to people from across many disciplines and professions.

NTBG continually strives to foster a greater understanding of plants whether the lesson is in the form of a 90-minute public lecture, a six-month internship, a field trip, or a weekend workshop in our nursery, education center or the in our gardens and preserves.





South Shore Gardens

Located in the Lawa'i Valley below NTBG Headquarters, our flagship McBryde Garden abuts the adjacent Allerton Garden. These exceptional gardens offer varied topography, microclimates, and stunning view planes with extensive living collections of tropical exotic plants, Polynesian introduced plants, and one of the richest, most diverse assemblages of native Hawaiian plants in existence. Daily public tours access both gardens by way of a breathtaking coastal roadway into the valley from the Bill and Jean Lane South Shore Visitor Center.

Welcoming more than 57,000 people to our South Shore Visitors Center, tour arrivals reached their highest number in 2016, with a two percent growth over the previous year.



In February, the Garden welcomed Tobias Koehler as its new Director of South Shore Gardens. Under his direction, and with the hard work of staff and volunteers, 2016 was a year full of activities, achievements, and community involvement. The number of visitors arriving by cruise ship continued to grow with nearly ten different cruise brands from two major cruise lines.

The number of private events such as weddings nearly doubled last year. We also invited our local community to join us for movie nights in the garden, plant sales, and the Christmas Craft Fair.

In the Allerton Garden, horticulture interns and volunteers working with our horticulture staff on a restoration project at Lawai-kai, planted over 500 native plumbago and pandanus seeds. along with 1,000 seedlings and native sedges.

In addition to implementing a new tour interpreter training program in 2016, our South Shore gardens hosted cultural events in which several hula halau (schools) from across Hawai'i paid homage to the legacy of Queen Emma in the Lawa'i Valley. We also hosted our first traveling art exhibition, Nature Connects, which featured 14 nature-themed sculptures made from LEGO bricks. The exhibit was on display in the McBryde Garden May

through July, drawing local residents, school groups, and families between spring and summer breaks.

Physical upgrades and additions in the South Shore gardens included the completion of a new universally accessible connector trail linking our streamside Reading Palms walk with the newer Biodiversity trail, greatly improving accessibility over uneven terrain. In June, we completed a new maintenance building in the Lawa'i Valley, allowing us to relocate and improve our vehicle and equipment maintenance operations.

In September, partnering with the Kaua'i Conservation Alliance, we held the one-day Kaua'i Conservation Expo following the IUCN World Conservation Congress. The expo was offered in the McBryde Garden and featured 40 local exhibitors representing conservation and environmental groups from around the island. Educators, students, community leaders, and other partners in protecting nature — more than 400 people in all — attended the zero-waste event that included Kaua'i's mayor and keynote speaker Ulaia Woodside, executive director of The Nature Conservancy Hawai'i. With a "Conservation Marketplace of Ideas," educational demonstrations, and cultural performances, the expo proved to be a great way to advance conservation and bring the enthusiasm of the World Conservation Congress to our own community.





Limahuli Garden and Preserve

Limahuli Garden and Preserve, on the north shore of Kauaʻi, is located in one of Hawaiʻi's most culturally, historically, and biologically important valleys. Hemmed in by steep mountains and the sea, Limahuli is home to nearly 250 taxa of native plants and animals, many threatened with extinction. The valley, bisected by the pristine Limahuli Stream, is also a treasure-trove of archaeological and cultural assets and provides an outstanding window into Hawaiian biocultural conservation embodied by the ridge-to-reef ahupuaʻa land management system.

Education plays a critical role at Limahuli. In 2016, Limahuli provided a research environment

for three graduate students whose projects focus on various aspects of conservation in the ahupuaʻa of Hāʻena. The results of their research will inform our adaptive management of the resources of the valley and surrounding area.

In 2016, field research for a collaborative project with a multi-disciplinary group (botany, marine biology, economics, and atmospheric science) from the University of Hawaiʻi was completed as part of a two-year project that explores how Pacific Island communities are adapting their management of terrestrial and marine resources in response to climate change.





Limahuli's staff continues to play a leadership role in initiatives that strengthen our connection to our community. We have also been involved in the master planning process for Hā'ena State Park and have led the rule-making process for a new Community-based Subsistence Fishing Area, the first such designation granted by the State of Hawai'i.

Within Limahuli Garden, we completed a new 'Dream Trail' as the first part of our ongoing efforts to improve safety, aesthetics, and the overall visitor

experience. This new trail leads visitors under a beautiful 'Ōhi'a lehua (*Metrosideros polymorpha*) tree with rare orange blossoms, opening to spectacular views of the Limahuli Stream and surrounding peaks.

In August 2016, Limahuli partnered with the Hawai'i Conservation Alliance to produce a poster depicting a holistic view of ridge-to-reef health in our community. The poster is a powerful communication tool that embodies a system-based

understanding of the challenges our community faces and the strategies needed to overcome them.

In the effort to conserve plants and birds, 2016 was a year of great success in the Upper Limahuli Preserve. One of our next-generation initiatives uses drone technology and 3-D image digital mapping to more safely and efficiently find individual rare plants in the Upper Limahuli Preserve's steep, rugged terrain. As new discoveries are made, the conservation value of the Limahuli Preserve increases.

As a way to bring our conservation operations into alignment with the Hawai'i Strategy for Plant Conservation, we have brought all of Limahuli's living collections into a single collectively managed group. Doing so will allow us to more efficiently conserve the genetic diversity of our rarest plants, making them more likely to survive the conditions of a changing planet.



Kahanu Garden and Preserve

Kahanu Garden, on Maui's windward coast, is home to the National Historic Landmark Pi'ilanihale heiau, the largest archaeological site in Hawai'i. The garden is also home to the NTBG Breadfruit Institute's collection of trees — the most comprehensive living collection of breadfruit trees in existence.

Additional important features of Kahanu Garden include the native Hawaiian Pritchardia palms and the Mary Wishard Coconut Grove with 21 distinct varieties of *Cocos nucifera* — coconut palms. In 2016, inventories of both the Pritchardia and coconut palms were updated with the addition of new ID tags. There are subtle taxonomic differences between specimens and species that require periodic updates to ensure records remain current and accurate.



Efforts within living collections also included the expansion of rare and endangered species native to Maui. Kahanu Garden is positioned to greatly represent many of the species on the island. New species being protected include Maui Halapepe (*Chrysodracon auwahiensis*) and Kā'e'e (*Mucuna sloanei persericea*).

Our 2016 efforts at Kahanu Garden also included a complete overhaul and upgrade of the solar infrastructure in the maintenance/work area, ensuring our staff has a stable power supply and reliable internet connection even in the Garden's remote location on East Maui.

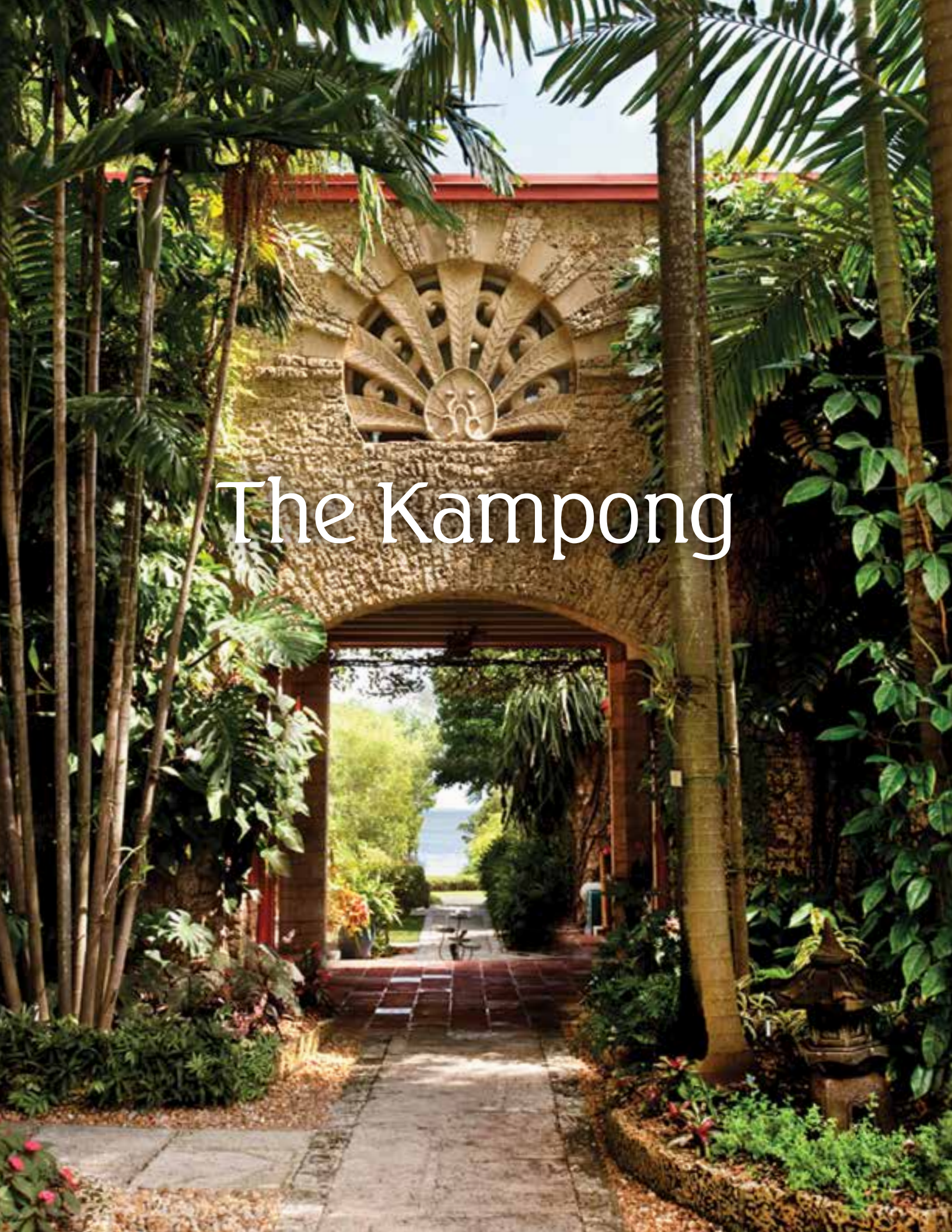
On the education front, Kahanu Garden hosted over 110 students from across Hawai'i and the continental U.S. The students participated in the 8th annual Kūlia I Ka Pono summer program that builds on cultural foundations of Kamehameha School programs over a five-week period. Taking advantage of Kahanu Garden's rich historical, natural, and biocultural assets, the program's curriculum focused on the concept of aloha 'āina (love of the land). The program was based on

systems-approach thinking, integrating values of the ahupua'a, a land management system that stretches from the mountain tops to nearshore fisheries.

Kahanu Garden welcomed a group of horticulture interns who spent two weeks contributing to the restoration of garden features as well as learning horticulture landscape strategy and effective techniques for agroforestry, tree maintenance, and creating and caring for public garden features. The interns also had lessons in coastal restoration within the Kahanu Preserve.

With the approval of special-use and special-management permits, Kahanu Garden's planned Visitor and Education Center made important advances with plans to break ground in 2017. When completed in 2018, the new Visitor and Education Center will be located near the entrance of the garden. The 1600-square foot center will combine indoor and outdoor space in a style consistent with the rural nature of its surroundings. The center will be used for garden visitors, school groups, workshops, and presentations.





The Kampong



The Kampong marked its centennial in 2016, recalling famed plant explorer Dr. David Fairchild's purchase of the Coconut Grove, Florida, property in 1916. From its origins as the tropical home of the legendary plant explorer, The Kampong has long been recognized as an iconic pillar of the history, culture, and landscape of Miami and south Florida. In its centennial year, The Kampong saw a 35 percent increase in visitors compared with the year prior.

The Kampong's living collections are flourishing. More than 170 newly accessioned plants were brought into the collections in 2016. Additionally, the Fellows Restoration Project contributed significantly to the renovation and improvement of The Kampong nurseries, boosting our capacity to renovate and propagate plants for the future.



Culture lives at The Kampong and in 2016 we celebrated indigenous culture with members of the Yawanawá tribe of the Brazilian rainforest...

There is a long history of education at The Kampong, which provides an outstanding setting for education programs serving learners from school children all the way through post-graduate, as well as scientists, medical doctors, and science educators. Our programs include: Tropical Botany for upper level students and professionals; a Botanical Illustration Workshop; the Barnyard afterschool program for underserved children; a Science Teachers Enrichment Program; and (added in 2016) a new program for middle- and high-school students. Culture lives at The Kampong and in 2016 we celebrated indigenous culture with members of the Yawanawá tribe of the Brazilian rainforest when they performed at The Kampong. We also presented a film festival in partnership with Mountainfilm Miami featuring environmental films dedicated to educating, inspiring, and motivating audiences about issues that matter.

Another exciting development includes: the revitalization of David Fairchild's original office and laboratory by conceptual artist Mark Dion. The exhibit tells the story of Fairchild's life and work through personal objects collected by Dion over a two-year period. The permanent exhibit opened as part of Art Basel Miami.

In 2016 The Kampong welcomed the restoration of the Fairchild-Sweeney House and surrounding cottages and grounds. The preservation of this important piece of South Florida history is ongoing with support from the State of Florida Department of Historic Preservation. Furthermore, the Junior League of Miami held a Designer Showhouse at The Kampong in which the Fairchild-Sweeney House and surrounding cottages were transformed by designers participating in the Showhouse.

In June, The Kampong was honored to host the American Public Gardens Association's Director's Dinner during the APGA's conference in Miami. Thanks to the generous support of donors, approximately one dozen Garden staff from Hawai'i participated in the conference and visited The Kampong.

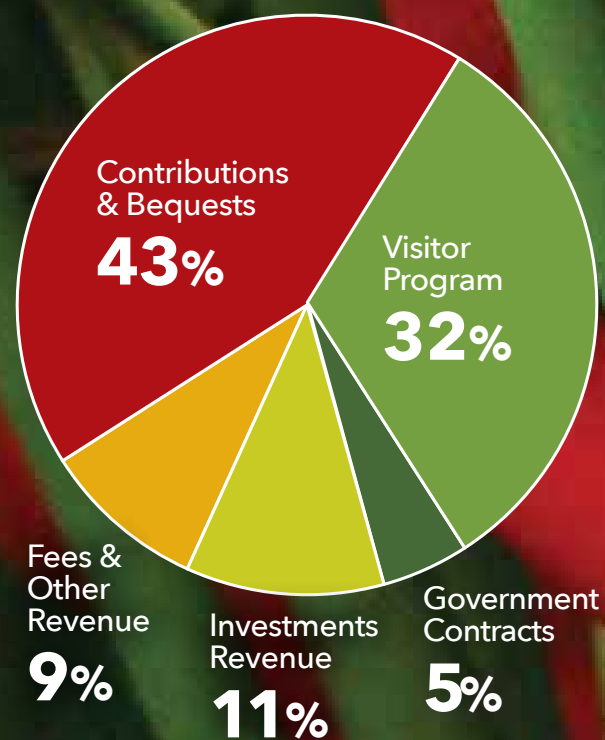
Finally, our annual fundraiser, Bali Ha'i, was managed entirely by Kampong staff for the first time and proved to be a success, based on funds raised and feedback from those who attended and told us they thought it was the best Bali Ha'i they had ever attended.



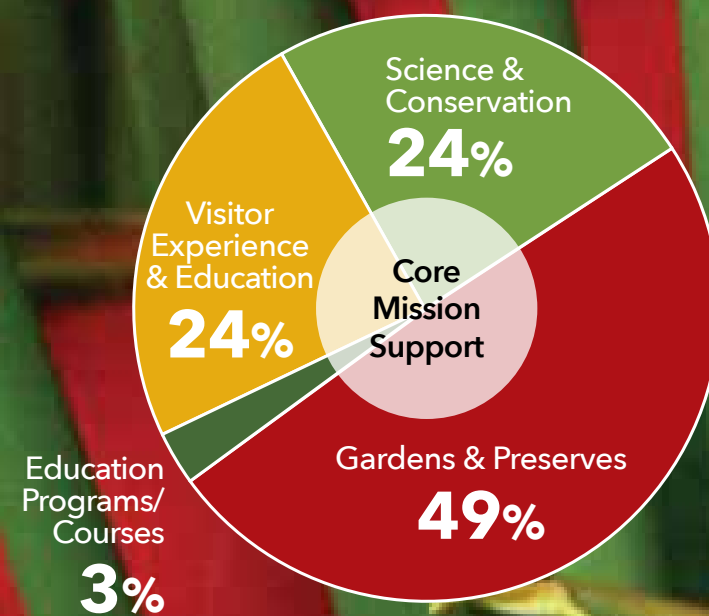
Financials

Balance Sheets - Audited December 31, 2016

Revenues and Support



Expenses



Core Mission Support represents the investment in key functions that are necessary, vital, and integral to delivering our programs. Each of our programs is built around, is supported by, and shares responsibility for Core Mission Support.

2016

ASSETS

\$ in 1,000s

Cash and cash equivalents	\$ 3,050
Other current Assets	1,797
Fixed Assets	35,038
Assets held for preservation	9,445
Assets held for investment	20,231

TOTAL ASSETS

\$ 69,561

LIABILITIES AND NET ASSETS

LIABILITIES:

Current Liabilities	\$ 995
Long-term liabilities	954

NET ASSETS:

Unrestricted	25,588
Board Designated	991
Temporarily restricted	12,514
Permanently restricted	28,519

TOTAL LIABILITIES & NET ASSETS

\$ 69,561

To review the National Tropical Botanical Garden's 2016 Audited Financial Statement, please visit our website at <https://ntbg.org/about/financial-information>

Board of Trustees

as of December 31, 2016

CHAIRMAN

Mr. Thomas D. Hewitt
Calgary, Alberta, Canada

SENIOR VICE CHAIRMAN

Mr. Hugh W. Foster
San Francisco, California

VICE CHAIRMAN

Mr. Merrill L. Magowan
Hillsborough, California

Harlan C. Amstutz, MD
Los Angeles, California

Mrs. Leslie M. Clarke
Amagansett, New York

Mrs. Mary M. Cudahy
Kula, Hawai'i

Mr. Gordon L. Deane
Cohasset, Massachusetts

Mrs. Martin Dickinson
Rancho Santa Fe, California

Ms. Anne G. Earhart
Corona Del Mar, California

Ms. Jan D. Elliott
Hāna, Hawai'i

Mrs. Eric P. Fraunfelter
Castillon Du Gard, France

Ms. Adaline H. Frelinghuysen
New York, New York

Mr. Peter C. Gardner
Miami, Florida

Mr. Donald W.Y. Goo, Faia
Honolulu, Hawai'i

Mrs. Roger P. Hanahan
Charleston, South Carolina

Mrs. Oliver Holmes
San Francisco, California

Mr. John C. Hooper
San Francisco, California

Mr. Douglas McBryde Kinney
Lake Forest, Illinois

Ms. Elizabeth E. Matthews
West Palm Beach, Florida

Mr. Mike Maunder, PhD
St. Austell, Cornwall, United Kingdom

Mr. David G. Meissner
Mequon, Wisconsin

Prof. Sir Ghilleen Prance, FRS
Lyme Regis, Dorset, United Kingdom

Mr. David W. Pratt
Līhu'e, Hawai'i

David Rae, PhD, OBE
Edinburgh, United Kingdom

Prof. John H. Rashford, PhD
Charleston, South Carolina

Mrs. Wayne Richardson, III
Līhu'e, Hawai'i

Mrs. Catherine S. Rodriguez
Venice, Florida

Michael N. Rosenberg, DDS
Miami, Florida

Mrs. Raymond L. Salley
Hōnaunau, Hawai'i

Ms. Patricia W. Sheehan
Hanalei, Hawai'i

Mrs. Judy C. Webb
Greenbrae, California

Mr. John D. Weeden
San Francisco, California

Ms. Nicole S. Williams
Glencoe, Illinois

Mrs. Reed C. Wilson
Portland, Oregon

TRUSTEES EMERITUS

Mrs. Leburta G. Atherton
Honolulu, Hawai'i

Mrs. Eleanor Bleakie
Cohasset, Massachusetts

Mrs. Martha W. Cox
Hobe Sound, Florida

Mr. Glenn A. Goldsmith
Lāwa'i, Hawai'i

Mr. Patrick Henry
Palm Beach, Florida

Mrs. Sarah O. Hewitt
Calgary, Alberta, Canada

Mr. Thomas S. Kenan, III
Chapel Hill, North Carolina

Mrs. L.W. Lane, Jr.
Menlo Park, California

Mrs. Betsy K. Matthews
Palm Beach, Florida

Mr. Jim Nabors
Honolulu, Hawai'i

Mr. Charles R. Wichman
Honolulu, Hawai'i

Council of Fellows

The National Tropical Botanical Garden Council of Fellows was established in 1985 as the preeminent membership group at the National Tropical Botanical Garden and has been instrumental in its development as a national resource. Fellows are given the opportunity to connect with the National Tropical Botanical Garden in a deeper way and have access to exclusive events and experiences. Fellows are invited to participate in the bi-annual Board of Trustees meetings, one held in Hawai'i in the spring and the other in the fall on the U.S. mainland. Fellows also have the opportunity to participate in specially arranged international and domestic travel programs that include visits to private and public gardens. Many Fellows become involved with the Garden's special programs and projects.

Annual Fellows dues begin at the \$1,500 level and continue up to the Chairman's Circle level with all revenue dedicated to the Tropical Garden Fund. The Council of Fellows has been instrumental in helping NTBG become one of the most important tropical botanical gardens in the world and is the most important source of funding for garden operations.

The following list reflects all those who were active members of the Council of Fellows as of December 31, 2016. While every effort has been made to ensure the accuracy of information and spelling, please notify our Development Office at 808-332-7324 of any errors.

Council of Fellows

CHAIRMAN'S CIRCLE

Mary and James W. Griffith, Jr.
Carbondale, Colorado

Heather and Patrick Henry
Palm Beach, Florida

Lin Lougheed
Miami Beach, Florida

Carey and Anthony Sutton
Gainesville, Florida

Nicole S. Williams and
Lawrence L. Becker
Glencoe, Illinois

BENEFACTOR FELLOW

Laura Ray and Donald W. Y. Goo
Honolulu, Hawai'i

Katherine and Scott Grainger
Kamuela, Hawai'i

Diane B. Heller
Chicago, Illinois

Mary Hulitar
Palm Beach, Florida

Betsy K. Matthews
Palm Beach, Florida

Marion S. and David G. Meissner
Mequon, Wisconsin

Teita and Thomas L. Reveley
Bainbridge Island, Washington

Diane and Michael Rosenberg
Miami, Florida

Barbara K. Sweet
New Castle, New Hampshire

PATRON FELLOW

Patricia P. and Harlan C. Amstutz
Los Angeles, California

Stephanie Lerner Ansin and
Spencer Stewart
Coral Gables, Florida

Lauran Bromley
Northbrook, Illinois

Constance L. and Thomas Broz
Freedom, California

Motoko T. and Gordon L. Deane
Cohasset, Massachusetts

Carol D. and Martin Dickinson
Rancho Santa Fe, California

Joan G. Evans
Santa Barbara, California

Adaline H. Frelinghuysen
New York, New York

Glenn and Jane Goldsmith
Lāwa'i, Hawai'i

Priscilla and James Gowney
Honolulu, Hawai'i

Thomas S. Kenan, III
Chapel Hill, North Carolina

Elizabeth H. and Douglas
Mcbryde Kinney
Lake Forest, Illinois

Susan E. Lynch
Greenwich, Connecticut

Robert Malott
Chicago, Illinois

Susan and Roy O'Connor
Missoula, Montana

Catherine S. Rodriguez
Venice, Florida

Annie Seipp
Portola Valley, California

Christopher A. Shuping
Chapel Hill, North Carolina

Louise M. and Richard A. Steenblik
Kīlauea, Hawai'i

Elizabeth and John Von Krusenstiern
Kalāheo, Hawai'i

SPONSORING FELLOW

Georgette F. Ballance
Miami, Florida

Sam* and Mary Cooke
Honolulu, Hawai'i

Mary M. Cudahy
Kula, Hawai'i

Martha R. Davis and Alix Ritchie
Fort Lauderdale, Florida

Louisa C. Duemling
Worton, Maryland

Jan D. Elliott
Hāna, Hawai'i

Ceseli and Hugh Foster
San Francisco, California

Gina and Peter Gardner
Plantation, Florida

Sarah and David Goodale
Hanalei, Hawai'i

Amy Dana Hewitt
Calgary, Alberta Canada

Gina and Raymond Jungles
Miami, Florida

Donald R. Logan
Santa Barbara, California

Helen Norton
Harpswell, Maine

Mr. Jaime Odabachian and
Ms. Johanna Boccardo
Miami, Florida

Katherine G. and Wayne Richardson
Līhu'e, Hawai'i

Katherine and Laurence Ronan
Miami, Florida

Margot and George Thompson
Portland, Oregon

Catherine and Michael Topham
Kalāheo, Hawai'i

Hau'oli and Chipper Wichman
Kalāheo, Hawai'i

Jeanne R. and Charles R. Wichman
Honolulu, Hawai'i

Michele and Malcolm Wiseheart, Jr.
Coral Gables, Florida

Jane Woodward
Palo Alto, California

FELLOWS

Anonymous (2)

Peter and Anne Anderson
Palo Alto, California

Linda Bacon
San Francisco, California

Wendy and Marc Badia
Easton, Massachusetts

Julia and William Beckham
Coral Gables, Florida

Monika Betts
Chicago, Illinois

Claudia and Alex Binelo
Key Biscayne, Florida

Terry Blechman
Miami Beach, Florida

Patricia and Richard Bohn
Miami, Florida

Beatrice Bowles
San Francisco, California

Diane M. and David Buck
Milwaukee, Wisconsin

Cristina Calzadilla and Tony Gonzalez
Miami, Florida

Kristen Deane and Douglas Campbell
Cohasset, Massachusetts

Jill and Donald Canaparo
Hanalei, Hawai'i

Andre Carothers
Berkeley, California

Wendy W. Chase
Bellevue, Idaho

Mary Mackiernan and Robin D. Clark
Kalāheo, Hawai'i

Hazel and Gordon Coates
Calgary, Alberta Canada

Pamela W. Cole
Coral Gables, Florida

Nancy and Edward Conner
San Francisco, California

Lucy B. and Steve Cookson
Denver, Colorado

Mary and Michael Copriviza
Cupertino, California

Michael Costello
Miami, Florida

Camila Cote
Miami, Florida

Margit and Lloyd E.* Cotsen
Beverly Hills, California

Melissa Croatti and Michael O'rourke
Hudson, New Hampshire

Lindsay and Zach Deane-Mayer
Boston, Massachusetts

Debra Demarco
South Miami, Florida

Frances Dillingham
San Francisco, California

Dianne and David Drought
Kalāheo, Hawai'i

Claire Efird
Wilmington, North Carolina

Valerie and Robert English
Coral Gables, Florida

Lisa and Timothy M. Fitzgibbon
Park Ridge, Illinois

Jane and George Fogg, III
Chestnut Hill, Massachusetts

Marisa Fort
Miami, Florida

Elizabeth H. Foster
Orinda, California

T. Jack Foster, Jr.
San Mateo, California

Hedda and Lutz Franz
Sai Kung N.t., Hong Kong

Harriet S. and Eric P. Fraunfelter
Bethesda, Maryland

Tina Freeman and Philip Woollam
New Orleans, Louisiana

James Guerber
Kōloa, Hawai'i

Roberta Haas
Hanalei, Hawai'i

Patricia S. and William J. Hagenah
Kenilworth, Illinois

Clifford Hague
Avalon, California

Beryl and Rex Hamilton
Coral Gables, Florida

Elizabeth and Scott M. Haskins
San Francisco, California

Kathleen and Herbert Hong, Jr.
Honolulu, Hawai'i

Molly and Jock Hooper
San Francisco, California

Kelly and Frederick Hopkins
Charlotte, North Carolina

Donna M. Howard
Kihei, Hawai'i

Kristin K. and Thomas J. Hughes
Boston, Massachusetts

Pamela K. and Roger Hull
Lake Forest, Illinois

Anna Karen Johnson
Kōloa, Hawai'i

Council of Fellows

Sallye and James Jude
Coral Gables, Florida

Marisa and Scott Kagan
Kīlauea, Hawai'i

Mrs. William A. Kaynor
Key Biscayne, Florida

Frank H. Kenan, II
Charleston, South Carolina

Thomas D. King, Jr.
Kīlauea, Hawai'i

Kimberley and Douglas
Mcbryde Kinney, Jr.
Lake Forest, Illinois

Brigitte and James Kishlar
Miami, Florida

Eliza and Michael Koeppel
Larkspur, California

Cheryl and Charles Kozloff
Hobe Sound, Florida

Karolyn J Kramer and Frank Cohen
Atlanta, Georgia

Suzanne D. Kuser
Washington, District Of Columbia

Lynda L. Larocca
Coral Gables, Florida

Janet and David Leopold
Waimea, Hawai'i

Yonna and Fredrick Levine
Miami, Florida

Wendy A. Levitz and Sanjiv S. Desai
Coconut Grove, Florida

Shiham Colegial and
Lorenzo Lorenzo, Jr.
Miami, Florida

Sally and Donald Lucas
Pebble Beach, California

Anne Macdonald-Korth and
James Korth
Coconut Grove, Florida

Cynthia and Merrill L. Magowan
Hillsborough, California

Elizabeth and Bruce Mahaffey
Coral Gables, Florida

Elizabeth E. Matthews and
Charles James
West Palm Beach, Florida

George G. Matthews
West Palm Beach, Florida

Joyce and Edward R. McDowell
Kīlauea, Hawai'i

Clay and Don Mcguire
Pebble Beach, California

Pamela and Edmund Mcilhenny
Avery Island, Louisiana

Cynthia and Terrance P. McMahon
Monte Sereno, California

Margaret and Paul J. McMahon
Coral Gables, Florida

Ruth C. Mead
Hobe Sound, Florida

Amy and Jack Meyers
North Haven, Connecticut

Ivonne and John Miller
Atlanta, Georgia

Ruth H. Mitchell
Key Biscayne, Florida

Juliet Moncrief
Durango, Colorado

Marianne C. Montoro
Coral Gables, Florida

Lynne Johnson and Randolph Moore
Honolulu, Hawai'i

Mary Macmillan Morse
West Palm Beach, Florida

Celeste and William T. Muir
Coconut Grove, Florida

Caroline H. and Charles Neal
Wilmington, North Carolina

Marie and Steve Nock
Pinecrest, Florida

Pauline and William Nutting
Hobe Sound, Florida

Suzy C. Orb
Mill Valley, California

Hélène M.m. Pancoast
Miami, Florida

Judith E. Parker
Cambridge, Massachusetts

Gail Paster
Chevy Chase, Maryland

Jill Penman and Matthew Kujawa
Miami, Florida

Thomas E. Powell, III
Burlington, North Carolina

Carol J. Pratt
Līhu'e, Hawai'i

Lazaro Priegues and Mike Hernandez
Miami, Florida

Ilona and James Priest
Kōloa, Hawai'i

Diana and Frederick H. Prince
Washington, District Of Columbia

Mrs. Janice C. Pryor
Coral Gables, Florida

Andrea L. Rice
Coral Gables, Florida

Ken Ringle
Washington, District Of Columbia

Roberta and Roger Rosenberger
Miami, Florida

Susan and John Rothchild
Miami Beach, Florida

Camila Salvisberg and
Solomon Barnett
Chicago, Illinois

Mary and Federico J. Sánchez
Miami, Florida

Katherine and John Scarborough
Titusville, Florida

Karen and Paul Schlather
Medina, Ohio

Patricia O. Schleuning
Portland, Oregon

Stephanie and Ken Schwartz
Manhattan Beach, California

Hillary and Constantine Scurtis
Coral Gables, Florida

Joan and Lynn Seppala
Livermore, California

Susannah M. and John K. Shubin
Coral Gables, Florida

Penelope and E. Roe Stamps
Coconut Grove, Florida

Sara and Dan Sullins
*North Vancouver, British Columbia
Canada*

Katharine Sullivan
Wilmington, North Carolina

Edward Sweeney, Jr.
Parker, Colorado

Phyllis E. Swindells
Bend, Oregon

Linda and Leighton Taylor
Honolulu, Hawai'i

Jocelyn D. Tennille
Miami, Florida

Cathy and Herndon Thomason
Avery Island, Louisiana

Vann and Parker Thomson
Coral Gables, Florida

Michaline and Matthew Todd
San Jose, California

Mary and Michael Trueblood
Cape Girardeau, Missouri

Christen and Christopher D. Turner
Walpole, Massachusetts

Mish Tworkowski and Joseph Singer
New York, New York

Christiane and Christopher Tyson
Coral Gables, Florida

Mr. and Mrs. Thomas N. Urban, Jr.
Des Moines, Iowa

Lenita C. and Henk Van Der Werff
Taos, New Mexico

Chrystal Vang
Anahola, Hawai'i

Virginia and Sander Vanocur
Santa Barbara, California

Susie and Walid Wahab
Miami, Florida

Heather and Richard Waters
Charlottesville, Virginia

Indru and Gulab Watumull
Honolulu, Hawai'i

Paul Weaver
San Francisco, California

Sharron Weber
Līhu'e, Hawai'i

Mary E. Weinmann
Washington, District Of Columbia

Heidi and Andrew Whitman
Ojai, California

Bernadette and Jonathan Wichman
Hanalei, Hawai'i

Wendy J. Wichman
Honolulu, Hawai'i

Christina B. and Reed C. Wilson
Portland, Oregon

Georgene E. and Edwin Y. Yamada
Lāwa'i, Hawai'i

LIFETIME

Mrs. Eugene Mcdermott
Dallas, Texas

HONORARY

Mrs. Alison Andrews
Seattle, Washington

Ms. Elizabeth C. Baker
New York, New York

Mr. Nicholas B. Bragg
Winston Salem, North Carolina

Hon. Anne Cox Chambers
Atlanta, Georgia

Count and Countess
Bernard De La Rochefoucauld
Fay Aux Loges, France

Mrs. Jeff Holcombe
Rancho Santa Fe, California

Madame Andre Madre
Paris, France

Mrs. Peter Mccoy
Beverly Hills, California

Mrs. John W. Pyne
Far Hills, New Jersey

Larry and Colleen Schokman
Coconut Grove, Florida

Mrs. Bagley Wright
Seattle, Washington

CORPORATE LEADER (\$10,000+)

Kōloa Rum Company
Kālāheo, Hawai'i

CORPORATE MEMBERS (\$2,000 - \$4,999)

East West Partners
Avon, Colorado

Kawailoa Development, Llc
Kōloa, Hawai'i

* Deceased



2016 Donors

Thank you! The National Tropical Botanical Garden is grateful to all who generously support our programs. The following list reflects the 2016 cumulative giving by donors and includes all gifts received between January 1, 2016, and December 31, 2016, including memberships, annual fund gifts, campaign gifts, pledge payments, grant awards, gifts for special projects, and tribute and memorial gifts. While every effort has been made to ensure the accuracy of information and spelling, please notify our Development Office at 808-332-7324 of any errors.

\$50-\$149

Anonymous (7)
1st Community Insurance Services
William Abercrombie
Susan Adams
Antonio Aguirre
Christine & Michael Aguirre
Lori & Michael Ah Tou
Stuart Albright
Barbara & David Alexander
Anthony Alfred
Lindsay M. & David Allison
Ibbie W. Al-Shamma
John Ambler
Anne Anderson
Margaret L. Andrews
Angela Headley Island Art
Grace Anurak
Louise Arakaki
Judy Leigh Arnobit
Bonnie Ashleman
Linda & Bill Atwater
Brigitte Auinger
Lynn M. Aylward
Esther Back
Dr. Jim Back
Annie Baik
Sarah Bakewell
Jamie & Mark Baldwin
Lori & Glen Balisacan
Bamboo Inn on Hana Bay
Gloria & Mark Baum
Nancy & Timothy Beach
Debra Beeler
Debbie Behrens
Ann Hallisey & Barry Beisner
Susan & Bernard Bell
Patricia G. Benca
Vera Benedek
Brian Berg
Daniel N. Bernstein
Elizabeth & Luther A. Bertrando
Carolyn Bertussi
Joe Biaglow
Patricia & Thomas Biehn
Catherine L. & Daniel R. Bird
Ann Bjork
Genevive Bjorn
Barbara Black
John S. Blackman
Michelle M. & Randall C. Blake
Pamela & Thomas Blake
Jana Rothenberg Blay
Ellen & Nicholas Blonder
Roberta Bloom & Michael Iven
William Bloomquist
Maile & Alastair Bloxsom

Janet Blumberg
Gerre L. & Lyle C. Boardman
Carol Bockman
Jolly Bodine
Christine Bogard
Jonathan Bond
Barbara Bonds
David V. Boucher
Bovair Real Estate
Renee Kossalak & Ben Bowen
Brenda R. & Robert E. Bowers
Fern Bowman
Madeleine D. Brandli
Susan & Paul Brandon
Donita Brannon
Barbara Braunstein
Monica E. Breedlove
Kristi Brenden
Edna Bronzino
Isabel & Barth Brooker
Balbi Brooks
Patricia Brooks-Servito
& Philip Servito
Jane & Marty Brown
Virginia Lowrey Brown
Kathleen & Jason Bryant
Kari Bryski & Tim Rooney
Nancy Budd & Roy Yamakawa
Nancy Ann & Terry Budden
Carole & Craig Buhlman
Liedeke Bulder & Dick Wright
Nancy Bull
Roddey Burdine
Robert Burgess
Susan & Coleman Burke
Diane & David Burnley
Sharron Lux & Bruce Burr
Cecilia & William Caldwell
California El Camino CPCU
Society Chapter
Sean Callahan
Colin & Sara Camacho
Alice Campbell
Antonia Canero
Carlsmith Ball LLP
Laurie Carlson
Carol Carpenter
Esther Carpi
Kathryn Carroll
Sharon L. Carroll & H. R. Downs
G. Nadine Carswell
Mary Anne & Ronald J. Casella
Marcia & Maurice Casey
Ric Catron
Suzanne & Nicholas A. Charles
Sylvia Chinn-Levy
Jessica Clabo
Robert Clabo

Carol & Dennis Claussen
Byron Cleeland
Marilyn J. Cleghorn
Sally Clifford
Peter Coates
Britt & JonAllen Cocumelli
Rennie Coit
Wendy Colello
Kay & Jon Collins
Michele & Edgar Compton
Stephanie & Paul K. Comstock
Ileen & Alex Conn
Laurie & Thomas Connolly
Dave Cook
Ursula Maul & John Cooke
Margarete & John Cooke
Sheila Cooper
Diana & Steven Coram
Barbara Corcoran
Susan Ford & Ivan Cordrey
Robert Coronado
Lynnette Coster & Paul Scolari
Margaret & Robin Cottle
Carol Hanson & Barry Cowan
Steve Coy
Laurie Craise
Barbara & John Crawford
DeeDee & Chris Cross
Margaret & Stephen Cull
Susan Cumins
Janine Cuthbertson
Sheri Hamersley & Frank Czerwicz
Barbara & Carlo Daquanni
Sarah I. Date
Shirley A. Dauterman
Leon Davenport & Kaiulani Kauahi
Diane & Doug Dawson
Nancy Day
Deep Harbor, Inc.
Dianne A. Delorenzo
Andrew Denny
Mary & David Dietrich
Stephen L. Dilts
Pamela Dixon & Nicholas Seagraves
Dian Althea Dooley, Ph.D.
Raquel & David Dow
William Dowdney
Lois Drake
Michele Drake
Sheila Drews
Suzanne Dudziak
Carmen & Burnie Dunlap
Beverly & Walter Durham
Patricia Burger & Derek Dykman
Lynne S. & Glenn N. Ebisui
William A. Eddy, Jr.
Patricia & Larry Egger
Mike Ehlebracht

Robin & Ernest Ehnisz
 Carl Einberger
 Martha & David J. Elpern
 Gloria Erickson
 Rebecca Erickson
 Jean Estes
 Don Evans
 Patricia J. Evans
 Dorothy & James Fadiman
 Lisa Falvy
 Carleah Fayen & Timothy Meenagh
 Anita & Anthony T. Febbo
 Sara Feinstein & Craig Willett
 Robin Fellers
 Melissa & Tim Fender
 Eleanor L. Ferril
 Arlene Ferris
 Gregory A. Ferris
 Glenn Finch
 Jennifer & Matt Firmin
 Marilyn Fisher
 Shirley & Stephen Fiske
 David Flowers
 Jo B. & Emil D. Flynn
 Foggs Automotive
 Annette V. & Bennett E. Fong
 Pearl Fong
 Margaret Foster
 Meg Fox
 Gisela Franceschi
 Judy Whitney & Edward Franzen
 Stephanie Frazier
 Debra Petersen & Tracy Fredin
 Isaac Alvarado & Ulla Freeman
 Eleanor & William H. Freudenstein
 Marlene Jordan & Samuel Friend
 Beverly Frost
 Melissa & Benjamin Fugitt
 Gladys Fujiuchi
 Millie Hughes Fulford &
 George Fulford
 Timothy Fullam
 Mark A. Fulmer
 Margaret Funk
 Glenn L. Gabanski
 William Garnett
 Jill L. Gaspar & J. Ann Carr
 GE Foundation
 Heather George & Scott Valor
 Joan George-Herzberg &
 Robert Herzberg
 Kurt Gerhold
 Danielle Gianola
 Jann & Lock Gibbs
 Lisa Gill
 Laura & Jim Gilpin
 Dena Gitterman
 Bill Glancy

David Goldhaber
 Leonard Goldstein
 Jenna & Jake Gonsalves
 Dania Sanchez & Antonio
 Gonzalez-Sanchez
 Meghan & Matthew Goodale
 Ryan Gordines
 Pamela Gordon
 Stanley A. Gorgol
 Sharon Gottfried
 Toby D. & William G. Gottfried
 Amy & Derek Green
 Mary & Ken Greenbaum
 Giselle & David Gregorius
 Marylou & Gregor Greig
 Matthew Grohne
 Thomas B. Grollman
 Kristin Grosenbach
 Phyllis M. Guard
 Paula Gudaitis
 Stephanie Guest & Richard Ellis
 Amitaba Gupta
 Francis S. Haines
 Sandee & Kenneth Haines
 Lisa & Larry Hale
 Donna Hammar
 Hana Kai Maui Resort
 Raven Hanna
 Mary Beth & Richard Hansen
 Mark G. Hanson
 Rheanne & Steven Hanson
 Catherine & William Hare
 Mike Harismendy
 Mary Kay Harkins
 Wendy Harman & Win Baker
 Ann Harris
 Jane & Gregory Harris
 Delyse Hart
 Kelly Hartshorn
 Jenny Den-Hartigh & Ted Hartshorn
 Marilyn Hashisaka
 Cathy Hassine
 Stephen C. Haus
 Mary & Robert Hawkins
 Sheryl & Eldon Hawks
 Margaret Janne Hayward
 Marianne P. Howard & Rufus K. Hedrick
 David Heffner
 Anandi Heinrich & Scott Clements
 Peter Hemstad
 Janet Henderson
 Kathleen A. Henney
 J. Steven Henry
 Kristen Henry
 Lauralee A. Hershey
 Robert Heyn
 Steve Hickman
 Guin Hillman

Bradford Hise & John Downey
 Stephanie Sunn & John Hodges
 Lynn M. Hodgson
 Jacquie D. Hoffman
 Susan & Tom Holling
 Terri & Timothy Honeycutt
 Jan & George Hooper
 Gary Hopkins
 Mari & Dudley Houghton
 Jan Hovey
 Linda V. & David P. Howell
 Linda Hudson & Thomas Pruett
 Hui o Laka
 Linda Humphrey
 Karen Huntsberger
 Stephen Hurtz
 Tamra Lea Ihara
 Carl Jacobs
 Maddy Jacobs
 Ellen Jacobsen
 Eric Jacobshagen
 Naugwattee & Dean Jamieson
 Lucretia N. & Michael Jaye
 Steven Jennings
 Lisa Johnshoy & Bill Prinzing
 Cherie & Larry Johnson
 Loren Johnson
 Renee Johnson
 Roberta & Eric Johnson
 Margaret M. & William R. Johnston
 Claiborne S. Jones
 Anil & Bharathi Joshi
 Melissa & Bill Joyce
 Lynette & Timothy Kaber
 Nani Kaluna
 Stella & Toshio Kaneko
 Spencer L. Karpf
 Kauai Historical Society
 Delano & Dawn Kawahara
 Linda & Galen Kawakami
 Kimo M. Keawe
 Susan & Thomas Kempe
 Elizabeth Ivon Kendrick
 Gloria Kennedy
 John & Linda Kennedy
 Beverly & Randolph Kentfield
 Alan Kesner
 Lisa King
 Linda Dean & John L. Kitzmiller
 Anne Marie & Eric Kleisler
 Patricia & Thomas Knapp, Jr.
 Moira & Stephen W. Knox
 Jamie Koerte & Curt Pantohan
 Cynthia Kojia
 Susan Koning
 Galen & Jared Kramer
 JoAnne & Todd Kroesen
 Marty Kuala

Karen Kuhlmann & Peggy Carney
 Maryanne W. & Charles Kusaka
 Julie Hayward & Daniel Kushner
 Angela & Bruce Kuyper
 Robert J. Kvidt & Jeffrey P. Tucker
 Kay T. & Vernon J. LaBau
 Ileana & Louis LaFontisee
 Barbara LaHaie
 Ms. Mimi Lam
 Susan Lander
 Lynne Landrigan
 Sherry Lang
 Joan Langan
 Linda C. & Christopher M. Laning
 Kim & Robert C. Larsen
 Phyllis K. Lathrope
 Marilyn & Robert Laugen
 Martie Law
 Marion Lawder
 Jennifer Lax
 Patricia & Byron Layman
 Dotti Augustin & Chuck Leathers
 Elizabeth Leavitt
 Terese Leber
 Judy Leet
 Peggy LeMahieu
 Aimee & Nicholas Leonard
 Michael Letzring
 Shirley O. & David V. Lewis
 Catherine Liddell
 Terrence Logee
 Gertrude Long
 Leo Lopez
 Jacquelynn Lott
 Heidi Lowe
 Sondra Lund
 Claire Sasaki-Lundgren &
 Donald Lundgren
 James W. Lunsford
 Erick Lux
 Margaret & James Lynn
 Sabrina Machado
 JoAnne Machin
 Melody MacKenzie & Branch
 Lotspeich
 Dawn & Duncan MacNaughton
 Macy's
 Marguerite F. Maguire
 Mary K. Mahoney
 Laurine J. & Glenn K. Makaneole
 Lynn Manolopoulos
 Suzanne & William Marsden
 Jane K. & Edward H. Marti
 Mary Ann Massenburg &
 Robert Purcell
 Joan Mathys
 Camilla C. Matsumoto
 Mary M. Matsumoto

Janis Matsunaga
 Carol Mattern
 Sharon Mattern
 Barbara S. & Michael J. Matzek
 Elizabeth Maurer
 Barbara J. & William H. May
 Carmen & Doug Mayer
 Mary G. & Robert H. Mazur
 Sonia Mazurek & John Hagey
 Kimberly & Mark McAtee
 Arva M. & Robert H. McCabe
 Kathryn R. McCool & Dean G. Smith
 Heather Davidson & William
 McElhaney
 Brooke McFarland
 Marcia & Peter McIntire
 Martha McKee & Thomas
 McNaughton
 Cynthia McLean
 Ailve McNestry & Terence Warner
 Ms. Tessa McSwain
 Janice Potter & Robert Meadows
 Donald J. Meeker
 Rosemary & Roger Mein
 Shirley Meneice
 Nancy J. Merrill
 Carrie Maier & Raymond Mew
 Mark Meyers
 Alexandra Meyn
 Dorothy Miao
 Naotoshi Mikasa
 Carolyn Miller
 Lucille Miller & John Richard
 Burkhalter
 Linda & Peter Milovsoroff
 Kristina Laidlaw & Scott Mincemoyer
 Elaine Mirkin
 Reiko & Darryl Miyasato
 Rhonda Mizeur
 Mokihana Pest Control, Inc.
 Glenn Molander
 Mia Monroe
 Ellen T. Rochelle & Michael G. Mooney
 Patricia Moore
 Tracy Morales
 Ann Mori
 Min L. & Ronald E. Mossman
 Janet Stoneking & Thomas Mozer
 Patricia Munsell
 Randall Murch, Ph.D.
 Helen & Daniel Murray
 Lydia & Benjamin Musher
 Lisa Crampton & Nassib Nabaa
 Jane E. Koehler & Stephen X. Nahm
 Cynthia & Patrick Napolitano
 Barbara E. Neal
 Eve Neibel
 Carol Neill

Jennifer Nelson
 Kari & Robert Nelson
 Lori & David Neubert
 Mary Ann & Edmund C. Newman
 Carolyn M. Nicholson
 Joanne Niwa
 Nancy Nott
 Grazyna Nowak
 Liz & Glenn O'Dell
 Noreen Ohai-Daniels
 Debra Oka & Joseph Yamamoto
 Anna O'Keeffe
 Sakae Okuda
 Virginia Olsen
 Neva Olson
 Carol P. O'Neill
 Linda & Gregory Opgenorth
 Dorothy & Richard O'Reilly
 Monika & Peter Ot
 Alicia M. Otazo-Reyes
 Mr. Dan Outlaw
 Susanne Ozols
 Desiree Palama
 Aaron Pan
 Patti Pantone
 Patt E. Panzer & Carson Zullinger
 Lindsey Pascua



Sairus Patel
 Clay Patmont
 Gale S. Patron
 Mindy & Leon Pawinski
 Alison Pease
 Chris Pendleton & Richard Starostecki
 Pamela A. Chamberlin &
 Bernard P. Perlmutter
 Thomas R. Perry
 Vilma Pesciallo
 Michael G. Peskura
 Susan & Robert E. Peters
 Barbara & Mark Peterson

Jeanne Petropol
Jon D. Pevna
Dave Pfeifer
Paula Phillips
Kathleen Pickett
Carolyn F. Pio
Hannah Pitstick
Angela & Michael Plambeck
Plantasia Landscaping
David S. Platt
Diane Poche
John Poehnelt
Gordon Poett
Nancy & Steven Poulos
Ruth & William Poulton
Mary Poxon
Robin & Samuel W. Pratt
Dylan Proctor
Thomas Pulling
Bruce Purvis
Robin Putman
Kathryn Quan
Nelda K. Quensell
Helen & Andre Raine



Ilyse Rathet
Patricia & Charles Raven
Lynn & Donald Reed
Taylor Reed
Dianne A. Reilly
Kelli Reilly
Thais Repetto
Angela Reuser
Christy Reynolds & Susan Reynolds
Sharon Rheingans
Jean & Harold Rhude
Bonnie Rice
Sally H. Rice
Yuliia & Matthew Richard
Billie Richardson

Vanessa Rickerby
William Rickman
Robert Riggs & John Riggs
Riley Family Revocable Living Trust
Elizabeth Ripotola
Don C. Roberts
Pauline Roberts
Susan E. Robertson
Barbara M. & S. W. Robeson
Kitty Roedel
Deborah & Jeffrey Roisman
John Rollins
Napua Romo
Leola C. & Russell K. Rosendaal
Marlese & Daniel Roton
Laura Ruby
Nicole & David Rudolph
Carol Keck & David Rupley
Nancee Rush
Mildred & Craig Russell
Roxanne & Todd Rycewicz
Princess Leslie Sacha
Judy Sahm
Saiva Siddhanta Church
Yvonne N. & Donald S. Sakata
Margit & Janos Samu
Judy Saronitman
Nancy Sato
Gordon Saville
Marilyn Robinson & Eric Scharf
Nancy & Dennis L. Schmit
Nancy & Tim Schmitz
Sarah & Paul Schoberg
Trish Schooley
Heidi Wetzel & John Schreiner
Barbara & John Schroder
Connie Schwarze
Christine Scott
David P. Scott
Isabelle B. & Michael A. Scott
June & John Scott
Teresa Scott & Frederick Joseph
Cynthia Sechrest
Lena & Mark Sell
Sharm Shannon
Michael Shaver
Debra L. Shenk
Suzanne Brust & John Shepard
Marcia & Bob Sherry
Linda Shinas
Jason Shira
Dr. Elizabeth M. Short
Connie Shuman
Linda Sible & William Cerbin
Linda M. & Robert L. Simon
Ranjeet & Diana Singh
Martha Singleton & Walter
Walkington

SMI Landscaping Architecture, Inc.
Betty Smith
Karen Smith
Merridee & Keith Smith
Orphalee Smith
Randi Smith
Margaret & Stephen Smith
Maria C. Snyder
William Snyder
Rick Soehren
Cheryl & Raynard Soon
Dennis P. Souza
David S. Spain
Sarah Spalding
Juliana Spath
Leinani & Bob Springer
Heather & Peter Stanko
Allison Stanley
Patricia & Shane Stark
Raydene & Peter StClair
Alison & John Steadman
Dan Steinberg
John & Ann Steinbrunner
Noreen & Lee Steinmetz
Nancy Stevens
Alice Stewart
Brady Stewart
Suzanne J. Stolar
James R. Stolzenburg
Karen Stomberg & Gary Westcott
Michal F. Stover
Karen & Ron Stratton
Patricia & Kendon Stubbs
Roselyn M. Subarton
June & Gary Sundberg
Sunset Chiropractic Clinic
Lisa L. Anderson & William M.
Swafford
Kay & Clifford Sweet
Connie Swyers & Arnold Hergan
Paula Szilard
Mieko G. Takabayashi
Sandra Takaezu
Jennifer & David Tanaka
Carol T. Tanner
Joanne Bloom & Thomas Tanzer
Peter C. Tausend
Lynn Taylor
Terra Nova Travel, LLC
Rachel & Dustin Thomas
Kevin Thompson
Thomson Reuters
Elizabeth & Joel Ticknor
Pam Kawaguchi & Dean Toki
Tim & Tracy Tomkovich
Linda & Ken Tomlinson
Robin Trinko-Russell
Barbara Turecky

Laurita P. & Albert Turner
Anna Twiselton
Catherine Tzur
Marta Janel Ullman
Mary Umehara
Mary E. Vale
Katherine Valier
Patricia Van Dyke
Debra Van Hyfte
Josophine Vanwyk
Stormy Bradley-Vasta &
Gaetano Vasta
Jennifer Vaughn & Cary Fritz
Soren Velice
Sue & John Verduin
Kristi & Jeff Vest
Jean Vieth & John Diepersloot
C. James Vitus
Gabriel Vye & Caroline
Reissenweber
Gay & Daniel Wallin
Joy Wannamaker & John Ouderkirk
Margaret L. Wardlaw
Susan Warner
Melody Ann Watral
Gary Wayland
Dolores Weiman
Champa & Robert Weinreb
Julie & Mike Weisbach
Doris & Daniel O. Weisman
Kimberly Weller & Douglas Gordon
Melanie Sifton & Matthew Wells
Sara & John Wells
Janice R. & David Welsh
Alyce Wertheimer
Kathleen A. West-Hurd & Steven Hurd
Lucy Whatley & Bruce Needham
Charleen M. White
Elana & Lorne White
Judith White & Philip Morgan
Mary Whitehill
Kristin & Richard Whitworth
Leslie Wiedemann
Cheri & Mark Wilcox
John & Kathryn Wilkins
Jody & Richard Williams
Kenneth Williams
Marsha & Wayne Williams
Maureen Wilmot
Amanda & Mike Winiarski
Julie Wirtz
Nancy Wolf
Patricia & Joseph Wolfe
Mairhofer Wolfgang
Pearl Wollin
Kathleen Woodward
Constance & Mark Wray
Talita Medeiros & Daniel Wright

Rose Marie & Douglas Wrung
Robert Yamada
Tami Yasutake
Roy Y. Yoneji
Patricia & Arthur Yotsuya
Donald K. Young
Ann & Frank Young
JoAnn Yukimura
Cheryl Zaccaro
Margaret Zacharias
Carlos Zambello
Muriel Zetter & James Chambers
Marleigh & Wiliam Zimmerman
Barbara & Michael E. Zins
Chris Zuleeg

\$150-\$249

Anonymous (4)
Patricia P. Adams
Jean & Edwin Aiken
Stefanie Alexander & Brendan Wilson
All Creatures Great & Small, Inc.
Lizzie Allen-Perez
Denys Alt
Jane Altberg & Richard Munson
Amazon Smile
Susan & Gary Andrews
Paula S. Applegate
Howard Arnold
Raymond R. Ashman & David D.
Burgess
Sandra L. Atkinson & Jack K. Williams
Vicki & Steve Atwater
Laurie H. & Robert F. Babb
John Bach
Giovanna Baldassarre
Bruce Baldwin
Cara A. Rockwell & Christopher J.
Baraloto
Susan Baranowski & Dale Rienart
Lynn K. Barker
Laura Barron
Carl Bauer
Deborah E. & Donald L. Beduhn
Stanley Behrens
Karen & Michael Beverly
Michael Bill
Karen & John Bocquin
Stephanie Bott & Cary Self
Fred Bove
Candice Ethridge & Kevin Bowden
Susan L. Bridwell
Allyn Bromley & Brian Baron
Raymon M. Brown
Lynn Buchanon
Mary Ellen Buckley & Donalie Bolke
Scott Bulfin



Cynthia S. Burke
Irana Hawkins & James Butrynski
Toni & Gary Carmichael
Casper Landscape Design
Lucille B. & Michael Ceurvorst
Deborah & Edward Charbonneau
Kumar Chaundhary
Adela & Tomas Chavez
Gerry Ching
Michelle & Evan Christenson
Gerald Chudy
Donna Lou Clarke & John Wheatley
Wyncia Clute
Lynn & Jack Cogan
Jackie Pelavin & Mark Cohen
Stephanie & Michael Colter
Audra Cope
Kate & Steve Costa
Anne & Bill Coulter
Helen Cox & John Latkiewicz
Nancy & Thomas Crawford
Richard A. Criley
Alan B. Curtis
Daryl Ducharme & Casper R. Curto
James W. Danahy
Tracy Davidson
Emily Herrick & Michael Denslow
Deborah Deutsch & Stephen Hay
Gretchen & Rajiv Dewan
Anne & Nick Dienenl
Deborah & John Divine
Christy L. & Tom Drumheller
Francine & Rick Dullanty
Nanigen & Bob Dumity
Debra Durant & John Schoendorf
Douglas A. Duvauchelle
Lydia Agundez & Denton Edwards
Beth Ellers
Patricia Engelhard
Elizabeth Murray & Michael English

Joy & Warren L. Erickson
Marlene S. Erven
Charles Espinosa & Roberto Viñas
Sharon Fisher & Keith Evans
Thyrza P. Eyre
Carolyn & David Fairbanks
Katherine & Timothy Farrell
Herman Ferreira & Michael Hoard
Sharon Fitzgerald
Leslie Fleeman & Davis Jeffries
Janet Flipert
Kerry & Hal Floyd
Teri Floyd
Rolando Rivero & Maria Font
Jo-Ann Forster
Suzanne & Byron Foster
Christine Fox & Philip Erwin
Ann & John P. Franzen
Jeffrey Frelinger & Acey Frelinger
Deborah & Daniel Freund
Emilie Fritz Veloso
Sue Fritzke & Brent Hansen
Alice & Robert Fujimoto
Stuart I. & Georgia L. Gardner
Angelica & Patrick Garvey
Jan & James George
Alice Glasser & Jesse Thompson
Kathleen & Arnold Gold
Linda Goldberg
Perry & Joe Goldsmith
Felicia Sanchez & Jose Gonzalez
Sheila & Mike Goodwin
Laurie & John Gosch
Cherie Gossett & Donald Beaman
Carol Govan
Ann F. Green & John McComish
Susanne J. Les & Tim E. Green
Mary E. & James Greenwell
Kate K. Gregg
Pat Griffin & Thomas Noyes
Julie & Kevin Grove
Mr. & Mrs. H. Paul Guess
Adrienne & Anthony Guida
Gretchen Hittle & Michael Gustafson
Robert Gustafson
Michael C. Gustin
Isabel & Adi Hacker
Palmer Hafdahl
Debbie & Ronald Hagen
John B. Hall
JP & Byrd Harrison
Catherine & Joseph Harrison
Nevenka & Joseph M. Harverson
Susan & Jim Hastings
Alice Hawes
Charlotte S. K. Hee
Brooke & Thomas Hemingway
Gwendolyn & Christopher Hendry

Ann & Thomas Hennessy
Jack Henning
Barbara & Neil Henrichsen
Casady M. Henry
Lynn & Thomas Henry
Barbara & Jim Herst
Laurie K. Ho
Barbara L. Hobbs
Carolyn & Bryan Holland
J. Mika Ashley-Hollinger &
Stuart Hollinger
Bogdan M. Holy
Pamela & James Homer
Honolulu Star Advertiser
Jessica Hooks
Carli Hoppe & Richard Hoppe
Chloe & Peter S. Illoway
Melvin Ing
Cecilia & Kip Irvine
Marilyn & Robert Isherwood
Alivia Peters & Lee Jackson
Maria C. Jaramillo
Sylvia M. Joesink-Mandeville
Sharon F. & Robert S. Johnson
Sarah & Barry Johnson
Eelekoa Kanamee
Freddie Kaufman
Bronwen & Gregory Keighery
Nellie Kellett
Sandra J. & Harry D. Kelley
Maurice Sprenger & Richard Kempf
Cynthia & Alan Kempner
Martha Kent
Ariane & John Kinnear
Dr. John T. Kirby
Shawna & Greg Kittridge
Joanie Klar
Eva Klaver & Andrea Kleanthous
Mona & David Klintiver
Ann & Robert Klose
Suzanne & Thomas Knauss
Claudia Koepf
Donna & Denis Kokernak
Kathleen & Kenneth Kokron
Rose Krebs & Ace Hodgins
Monica Paris & Kurt Kufeld
Helen & John LaGourgue
Blossom & Jones Lai
Geraldine & Marc Laidlaw
Carolyn & Bob LaMontagne
Land Strategies Hawaii, LLC
Kathie Larsen & Cheryl Marland
Paula & Phu Lau
Mary Ann Leer & Jules C. Resnick
Juanita Lefever
Lorraine Leiser & David B. Taylor
Mona & David Lemon
Nancy D. & Tony Lilly

Judi Bogdanoff-Lord & David Lord
Joan F. Luzney & Renee Lippmann
Mary L. & David N. Maas
Nina & Thatcher Magoun
Patricia & Robert Malcolmson
Patty & Mike Malone
Cynthia Manouilidis
Maui Breadfruit Company LLC
Carmen Mayo
John G. McClain
Leslie McClanahan
Joanne & David McComas
Mary & Jack McElligott
Margaret & Robert L. McGinty
Heather McLean
Linda McSwain
Karin Medigovich
Olga & David Melin
Isabel A. Merritt
Gwendolyn Mitchell & Dana Nicoll
Edith A. Moe
Heather & Brandon Moehling
Nancy Morton
Barbara & David Moser
Jennifer Moser
Sandie & Joe Moss
Susan Myers
Laura Nash & Tom Beale
Marjorie & Kenneth Neal
Margaret Nee & Frederick Saunier
Kathryn Neri
Jacquelyn & James Newman
Ellen Greene & Duncan Nichols
Edna & Clifford Nishimura
Sara A. & Thomas P. Noland
Blanche Nonoo
Lois C. & Peter B. Nottage
Merilee & John Novinson
Patricia & Edward O'Brien
Deanna & Brendan R. O'Donnell
Molly Gray-O'Grady & John O'Grady
Sada Okumura & John H. Drouilhet
Debra Olinger
Sandy Oltz
Barbara Oppe
Lori & Bill Orthel
Kathleen H. & Steven J. Ory
Ashley Roberts & Nathan Ostic
Nancy & Carlos Pardeiro
Judy Parker
Alisha & Lawrence Pew
Elizabeth M. Phillips
Anne Platt
Jeremy Porter
Diane & David Powell
Joann Lachapelle & Derek Prentice
Professional Service of Coconut
Grove LLC

Terry & Scott Radi
Lynn Ransone-Fong &
Timothy C. Fong
Sharlyn Rayment
Lisa & Douglas Reale
Catherine & David Reando
Adair & Michael Reeve
Gertrude M. Rehbock
Eva LaBarge & Eddie Renner
Evonnie Revitt
Lori & Greg Rhoades
Cindy & Gary Rich
Stephanie A. Richards
Cynthia Dumser & George Richmond
Valerie G. Ricordi & Jay Flynn
Rita Rieger
Jud O. Roberts
Arlene Robinson
Karen & Kendyl Roman
Dana Romsdal
Elaine & St. Julien Rosemond
Jay Rosenthal & Theodoros
Charamoglou
Lee Shoon & Robert Rucker
Carla & Robert Rugeroni
Kristie & Dave Rutherford
Renita Samuels-Dixon
Martha Sanger
M. Cecilia Sanguinetti &
Rick A. Del Toro
A'na Satara & Paul Satara Bever
Michiko Sato
Ann Schmidt
Carolyn Schneider
Frederick W. Schneider, III
Marsha Schoene-Langohr &
Marshall Langohr
Sarah Schoenfeld & Brandan
Nakamoto
Corina & Rhone Scoggins
Phil & Eldean Scott
Cathleen Clark & William L. Sealy
Marguerite Hoyt & Kenneth Sembach
Annette & Siegfried Shalles
Sharon & Charles Shedd
Gary L. Shores
Bernadette Y. Siy & Dane Taylor
Kate Snider
Camilla & James Sone
Cynthia K. & Edwin Sorenson
Megan Smith & David St. John
Fredrick & Marilyn Stark
Jane & David Stern
Judy & Will Stevens
Nancy L. & A. J. Stokes
Liz Strauss & Mark Hughes
Kathleen L. Street & Solomon K.
Hoopai, Jr.

Stella Swanson & Leslie Frank
Karen & David Swearingen
Anne & Brian Sweat
Annabelle T. Takahashi
Melissa & Stephen Tangalin
Rosalie A. & Edward S. Tank
Rita & John Thibodeau
Kim & Ruth Thich
Cathy & Herndon Thomason
Lesley & Michael Tierra
Devi & Chris Town
Marilyn Anne Townsend
Karen & Doug Truesdell
Ada & Roberto Trujillo
Freda C. & William E. Tschumy
UBS International, Inc.
Tara & Jesse Van Eyk
Scott Van Gerpen
Karen & David Vandervoet
Vernize & Nick C. Vera Cruz
Martha & Frank Voytek
Martha & Fred Wales
Pamela & Wesley Warner
Victoria Warner
Stanley Watt
Cathy Moratto & Rich Waxman
Ronald Weeks
Linda J. & Robert S. Weiner
Deena & Donald White
Shirley & James Whitfield
Judy & Frederick Williams
Parker Wittman
Mary & Joseph Woelfel
Miok & Mark Wolbers
Robin Wong
Teresa Wyatt & Heidi Hauschild
Elizabeth Suarez & James Wynkoop
Diana Yankee
Julie Yanson & Peter Boswell
Elissa L. & Albert E. Yellin, M.D.
Mark Zepf
Evelyn & Stuart Zimmerman



\$250-\$499
Anonymous (4)
Marjorie S. & Charles S. Abbot
Mary Abrams & Gary Cramer
Josephine Alessi & Richard Litsky
Nancy Alexander
Marilynn Allemann & Michael
Gleeson
Esther & Larry Apple
Jill & Tom Archambeau
Diane D. Ashley
Sharon & Richard Ayres
Anne & Raymond Baddour
Gayle A. Bainbridge
Baja LLC
Gillian Robert-Baldo & James Baldo
Brenda & George W. Barnard
Patrick T. Battle
Barbara & David Beasley
Janet & Don Bednarczyk
Charles Belin
Nancy Benson & James Caulfield
Karen & Ronald Bereit
Catherine Wilson & Jake Bernard
Deborah Binder & Gaetan Veilleux
Bionic Brand Lab
Beryl B. Blaich
Alison Blessing
Mamie & Charles Bolender
Victoria de Santos & Lars Borg
Karen Leonard & Roger Bredeson
Linda & Charles Brixey
Johannah Brown
Marina & William Brown
William Brown & David Murray
Lynn & Alvin Bunis, Jr.
Teresa Buoniconti
Ana Buraglia
Gail Burke
Krystyna Ermer & Eric Byron
Josephine & Michael Camarata
Laura & Joe Canciamilla
Vickie Caraway
Naomi Matias & Michael Carlsson
Kathryn & Bruce Carrick
Barbara Engelter & Jean Carufo
Patricia & Lawrence Chaffin
Bonnie Joe & Gregory Chang
Elvrine Chow
Cynthia L. Christoph & James L. Greve
Ruth Clarke
Lisa & James J. Cleary
Merrilee & Jesse Taylor Cole
Pamela W. Cole
Jane & Bob Colesar
Ola & Gregg Connolly
Jan & Bruce Conroy

Chloe E. & Lawrence P. Cook
Alison & Robert Corcoran
Carlos Corradine
Camila Cote
Anna Cox & Dan Harrow
Amy & Ray Crawford
Sandra & Donald Crocker
Andrea & Ron Crown
M. Victoria Cummock
Elizabeth Kincannon & Daniel
Dahlberg
Dalla Rizza & Associates
Marianne Daniels
Nancy & Earl Dannen
Dickie & Rick Davis
Barbara Dawicke
Evelyn de Buhr & Frank D. Rothschild
Lauren De Lavalette
Theresa & David Della Lana
Sherri Deutsch-Atwell
Elizabeth Diaz de Villegas
Machi & Greg Dilworth
LuAnn M. & Jeff F. Doerzbacher
Donationxchange
Karen & Jon Downie
Georjana Barnes & David Drubin
Maria & Lewis Eastlick
Toby & Michael Eleff
Debra K. Ellers & Joseph D. Grooms
Suzanne & Thomas Ellis
Jan D. & Edward G. Elowe
Elena Evans
Emory D. Evans

Helen & Glenn Everitt
Kim & Gary Eyring
Patricia Fallbeck & Thomas Timmons
Ling & David Farrell
Deborah & Thomas Farrell
Gerda & Eyvind M. Faye
Kathleen Fernandez
Michal & Dana Finney
Michael Flagg
Carmen Tebbe & Neal Flesner
Bernadette & Charles Formoso
Ellen & Lyn Fox
Anita Freeman
Rebecca K. & Richard W. Fries
Fieldine Gallivan
Pamela Garrison
Ann & Allan Geisendorfer
Susan F. & Emile J. Geisenheimer
Kathy Mayer & Barney Gerber
Sharon & Donald Gerber
Steve & Kay Germiot
Deborah Giles & Charles Simrell
Cindy & Tom Goff
Rick Golba & Ted Faigle
Carolyn Gold & Matthew Gold
Sheryl Gold
Ann Goldman
Anne & Edwin Gordon
Janet & Wylie Greig
Jamie & Michael Griffith
Patricia Grogan & Naomi
Grogan-Hurlich
Ronnie Grover-Kalthoff &
David Kalthoff
Laura Guitar
Suzanne & James Gullett
Linda & Robert Hacker
Halau Hula Kamamolikolehua
Michael Hamilton
Kayla Justice & Tyler Hamilton
Kathleen & Edward Harcharik
Susan Harder
Beverly J. Harrington
Cynthia & Robert Harris
James F. Harrison
Susan & Michael Harrow
Brian Hart
Richard Hatcher
Bonnie & Eric Helpenstell
Margaret Hernandez
Margo L. & Albert Hofeldt
Lauren & Mark Hofer
Corbett & Michael Hoffman
Dr. James Holbrook
Edna & Keith Holdeman
Carolyn & Jerome Hollander
Susan & Bill Holliday
Lorraine Hubsch

Katherine & Rupert Hucker
Françoise Ibars
'Iokepa 'Imaikalani
Diane Isonaka & David Galas
Susan & Ira Jacobson
Phyllis & Richard Jarke
DeVonia & Winsor Jenkins
Sharon & Mark Jillson
Cynthia P. & Lynford M. Johnson
Nancy Johnson & Louis Johnson
Jeffrey K. Jones
Kay Jones & Kelley Jones
Tamara Jones
Jupiter Island Garden Club, Inc.
Margaret M. & Joseph E. Kalet
Judith & Michael Kane
Jill Katz
Matthew Katz
Sabra Kauka
Wendy & Thomas Kelly
Lynn & Thomas Kevern
Monica & Alan B. King
Louise Woerner & Don Kollmorgen
Mary Kopitzke & Robert Kolosky
Carol & Yves Kraus
Michiel Niemeijer & Scott Kuester
Zoran Kuzmanovich
Pat Kyle
Peter Laird
Stephanie Lavender & Dennis
Hearing
Julie Spielman & Richard Lee
David & Evelyne Lennette
Stephen Leon
Jennifer & Dennis Lester
Carolyn G. & Richard C. Lindberg
Bonnie & Curt Lofstedt
Joan L. & Paul C. Loizeaux
Joan & Gerald Lyke
Carol A. Marcotte
Cynthia S. & John R. Hummel
Janice S. & Russell E. Martenson
Sandra & Robert Mauceli
Janet L. Mayfield
Tenelle & Riley McCormack
Marye L. & Sam A. McCroskey
Linh & David McDonald
Cathleen McGreal & William Miller
Barbara & Laureston McLellan
Tara & Steven McNamara
Sandra & Bruce Mehringer
Deborah Melville-Henry &
Carlee Henry
Karen & Paul Memrick
Vickie S. & Mark E. Meranda
Virginia L. Mercedes & William B. Karst
Kathy & Wayne Metcalfe
Kevin Millett, Holo Holo Charters

Linda & Daniel Momohara
Milica Morman
Sarah & Jay Munson
Angeli Murthy
Mallesh Murugesan
Adele Myers
Mary Navarro
Marivi Nevin
Helen J. Nicastrì & Brian Burry
Linda & Carl Nordstrom
North Tustin Veterinary Clinic
Robert & Gisela Norwood
Maureen & Jonathan Novaco
Mary & Myron Oakland
Theodora & Howard Oberlander
Meaghan O'Connor
Mrs. Ethel Oda & Mr. Daniel Anderson
Maryam Orandi-Rasekh
Walter Orth, Jr.
Karla & Kelly Osborne
Julie & Craig Pacini
Nancy Scanzon & David Page
Suzanne Koptur & John Palenchar
Marley A. Palmer
Hélène M. M. Pancoast
Janice & Rodney Pascua
Lucinda D. Patterson
Chris Pedersen
William E. Pelham & Maureen
Cullinan Pelham
Judith T. & James L. Perzik
Carolyn L. & Norbert Pfahler
Neeru & Michael C. Phillips
Alejandro Pino
Madeleine & Harvey Plonsker
Pamela & Bob Plumbley
Linda E. & Alan Pollack
Emma & Richard Pompetti
Ilyse Rathet & Ronald Post
Arun K. Puri
Suzanne E. & Walter S. Purvis
P. Genie Trapp & Tom A. Ranker
Julie & David Ransom
Paul B. Redman & Dean O. Berlon
Elizabeth & Edward Renaltner
Esther & Monroe Richman
Keith Robinson
Raul R. Rodriguez
Stephen Roger
Lisa & David Roth
Carol & Howard Robinson
Barbara Nelson & Steve Rush
Emily Sullivan & Robert Ruwitch
Lillian Sagebien
Ann K. Sakai & Stephen G. Weller
Thomas & Cathryn Sakiyama
Connie & Richard Sarkisian
Elizabeth & Bill Scamahorn

Lorraine & Gregory Scaven
Victoria & Jeffrey Schmidt
Larry & Colleen Schokman
Catherine & Edward Scott
Paige Searle & John May
Robin & Ned Selfe
John Sherfese
Julia Sherwin & Michael Haddad
Michael Shpizner
Mary Shuford
Sima & Peter Siegel
Dr. Don Simonet & Mrs. Marcia Austin
James C. Skelton
Barbara & Richard Smith
Clifford W. Smith
Susan Southwick
Catherine M. Steinbach & Paul Garcia
Cherise & Roger Still
Tamara & Max Strang
Matthew Sullivan
Lorrie & Donald Swartz
Cynthia & David J. Talaber
Georgia B. Tasker
Jane & Ken Taylor
Cheryl L. Teague & Steven C. Whitney
Bonita Thornsburry
Wendi Tow
Susan Uchida
Annie R. Uhrich
Deborah Vazquez
La Rhea & Bruce Villinger
Jan Vitrofsky
Lona & David Voellinger
Donna & James P. Vogler
Janice Von Thaden
Shellie Vue & Shoua Xiong
Tammy & Mark Waleski
Barbara A. & James P. Walsh
Kathy Weiss
Gregory Welker
Petra G. & Mark A. Wells
Emilie & Steve Wernick
Sandra K. & Robert D. Westfall
Heidi & Andrew Whitman
Lorraine & Anthony I. Wichman
Theresa & Peter Wiederoder
Carol & Gaylord H. Wilcox
Aaron Winshall
Kathryn Wiser
Lisa Wisotzky
Janet & Thomas S. Witten
April & Justin Wolf
Cecily Wong
Julia Wu & Mark Dodd
Matthew Yale
Mary M. Young
Your Cause, LLC Trustee
Michael Zimmerman

\$500-\$999
Susan & Thomas Abell
Linda & Thomas Adams
Terry Ainsworth
Patricia & Nylen Allphin
Altman Insurance Services Inc.
Ann S. & Eugene C. Anderson
Merritt & John Atwood
Elizabeth C. Baker
Scott Barkow
Ricki J. Bell
Daniel Boesz
Mary E. & Jeffrey T. Bretz
Laurie & Drew Brown
Kate & Bert Bunnell
Doris & Richard Cellarius
Janna & Bruce Chandler
Lien & Robert Chen
Carole C. Chun
Biana Demarco & Cliff Comfort
Mary M. Cooke
Laura & George Crabb
Wendy & Anthony Craven
Richard L. Danforth
Carolyn S. & Gordon K. Davidson
Carol Ann Davis & Norman Brand
MaryLin Dedeaux
Lin & Shaun Deola
Diane Dickhut
Divine Tours, Inc.
Judy & John Ernst
Jennifer Etter
Denise Farwell & Patricia Mayer
Fleming Revocable Trust
Linda & David Frankel
Celia Vigil & William Galcher
Kathy & Jim Gallucci
John Game
Garden Island Resource
Conservation & Development, Inc.
Joan C. & Larry Gehrke
Linda & Phillip Greene
Gregory J. Scaven Family
Charitable Fund
Marcia & John Harter
Frank O. Hay, Jr.
Jay Henderson
Claudia & Ronald Hill
Kirsten N. Hines & James A. Kushlan
Julie & David H. Hodge
Elizabeth W. & Zachary Hulsey
Judy Hunt
Gary Ide & Paul Kraselsky
Insurance Factors
John & Margaret Ueleke Donor
Advised Fund
Douglas & Sandra Johnson



Nancy & John Jost
Susanne S. Kayyali
Janet & Adam Killerman
Kukui’ula Development Company
(Hawaii), LLC
Silvia & George Larrauri
David Lassner
James & Nancy Liddil
Living Foods Market & Cafe
Maxine Long
Natasha & John Lowell
Steve Lowsky
Francesca Luzuriaga & Ross Larkin
Frank MacMurray
Lori Erreca & Ronald Manzoni
Dr. Flor Mayoral
Tracey & Sally McCullough
Katherine Merrill
Camilo Miguel, Jr.
Julius Miller & Robert Miller
Cyrus M. Monroe
Wynne Szeto & Gregory Moore
Michael Moore
Carol A. Nance
George Neary
Anne P. & Harry Newman
Melissa & Neal Norman
Mr. Jaime Odabachian & Ms.
Johanna Boccardo
Sandra & Wilcox Patterson
Shirley & Ara G. Paul
Janet M. & Jay E. Peace
Seog Soon Pearson & Stephen D.
Pearson
Estela Poo
Scarlett Presley & Fleming Crim
ProSERVICE HAWAII
Pulp Figures
James A. Wiseman & Diane Ragone
R B/Hazard Family Charitable Trust
Frederica Lawrence Sandoe
Sara Solberg & Beverly Tong
Lauren & Edward Spilsbury
Susan & Henry H. Stauffer
Leah M. & John S. Stroup
Sylvia B. & Jack F. Sweeney
Sylvia K. & James L. Thacker
The Kauai Marathon
The Michael N. Rosenberg
Revocable Trust
Lydia Thomas
Kate Grace & Peter Thome
Melissa Tremblay & Owen Prentice
Tunu Puri Charitable Foundation Inc.
Margaret R. & John W. Ueleke
Nancy Reiersen & John Uribe
Alexandra Van Romondt
Ruth & David M. Waterbury

Jay P. Webster
Olivia Collins-Wilmot & David Wilmot
Bonnie & William Wilson
Bonnie & David Wolfe

\$1,000-\$4,999

Anonymous (3)
Adobe
Alan Akana
Jon J. Alexiou
Anna & David Anawalt
Peter & Anne Anderson
Barbara Anderson
Arquitectonica International
Corporation
Betsy S. Atkins
Bank of America Matching Gifts
Julia & William Beckham
Monika Betts
Terry Blechman
Patricia & Richard Bohn
Gerry Weinmaster & James Boulter
Beatrice Bowles
Diane M. & David Buck
Cristina Calzadilla & Tony Gonzalez
Catherine & Michael Campbell
Jill & Donald Canaparo
Michael Canorro
Carol Case
Wendy W. Chase
Mary Mackiernan & Robin D. Clark
Hazel & Gordon Coates
Susan & Charles Cobb
Eve & Martin Cole
Nancy & Edward Conner
Lucy B. & Steve Cookson
Michael Costello
Margit & Lloyd E. Cotsen
Carol & Ronald Croatti
Donald Darst
Martha R. Davis & Alix Ritchie
Mary C. & Steven R. Day
Cayetana de la Quadra-Salecado &
Jose De Churtichaga
Debra DeMarco
Penelope W. & James W. DeYoung
Frances Dillingham
Dianne & David Drought
Louisa C. Duemling
Phyllis Duke
DuPont Pioneer
DuPuis Group
Ms. Anne G. Earhart
Earthworks Pacific, Inc.
East West Partners
Michele & Roger Engemann
Valerie & Robert English

Environmental Partners, Inc.
ET Services LLC
Terry Micheau & Rob Evans
Extra Credit Inc.
Dianne Farley
Martin Ferreira de Melo
Lisa & Timothy M. Fitzgibbon
Jane & George Fogg, III
T. Jack Foster, Jr.
Hedda & Lutz Franz
Elizabeth Frautschi
Tina Freeman & Philip Woollam
Sandra L. & Reginald P. Gage
Jack & Janet Gillmar
Kathleen & James Goldsmith
Pauline Goldsmith
Laurie & Richard Goldsmith
Karen & Richard M. Goodale
Myriam & Marc Grad
Grand Hyatt Kaua’i Resort & Spa
Margaret (Garth) S. Greene
James Guerber
Yvette & William H. Hackett
Patricia S. & William J. Hagenah
Clifford Hague
Beryl & Rex Hamilton
Mary E. Hanahan
Elizabeth & Scott M. Haskins
Hawai’i Pacific Health
Amy Dana Hewitt
Doug Hillman
Holbrook Travel, Inc.
Irene & Oliver Holmes
Kathleen & Herbert Hong, Jr.
Paul Horner
Donna M. Howard
Kristin K. & Thomas J. Hughes
Pamela K. & Roger Hull
Robert Scott Jackson
Jane Woodward Revocable Trust
Davene Januszewki
Jhamandas Watumull Fund
Anna Karen Johnson
Sallye & James Jude
Gina & Raymond Jungles
Marisa & Scott Kagan
Ka’iwa Construction Inc.
Kaua’i Marriott Resort
Kauai Coffee Company, LLC
Kauai Nursery & Landscaping, Inc.
Mrs. William A. Kaynor
Charles G. King
Thomas D. King, Jr.
Kimberley & Douglas M. Kinney, Jr.
Peggy & Emerson Knowles
Eliza & Michael Koeppel
Cheryl & Charles Kozloff
Karolyn J Kramer & Frank Cohen

Suzanne D. Kuser
Karen Olson & R. Kent Landmark
Lynda L. LaRocca
Natalie T. & David R. Lashmit
Yonna & Fredrick Levine
Wendy A. Levitz & Sanjiv S. Desai
Shiham Colegial & Lorenzo Lorenzo, Jr.
Elizabeth & Bruce Mahaffey
Martin & Eve Cole Charitable
Gift Fund
Rae & Edward P. Matthews
Joyce & Edward R. McDowell
Clay & Don McGuire
Cynthia & Terrance P. McMahon
Ruth C. Mead
Amy & Jack Meyers
MFW Topham Fund at Schwab
Charitable
Microsoft Matching Gifts Program
Bethany & Robert B. Millard
Ivonne & John Miller
Ruth H. Mitchell
Caroline & Tad Miura
Juliet Moncrief
Marianne C. Montoro
Lynne Johnson & Randolph Moore
Mountainfilmia Incorporated
Celeste & William T. Muir
Caroline H.and Charles Neal
Karl Niklas
No Ka Oi Landscape Services
Marie & Steve Nock
Helen Norton
Pauline & William Nutting
Suzy C. Orb
Outfitters Kauai, Ltd.
Judith E. Parker
Kathy Parks-Suarez
Gail Paster
Pharmasol
Thomas E. Powell, III
Lazaro Priegues & Mike Hernandez
Ilona & James Priest
Diana & Frederick H. Prince
Mrs. Janice C. Pryor
Susan & Wm Randall
Raven Foundation
Alita & Nathaniel Reed
Andrea L. Rice
Sally Martin & Scott Robinson
Shelagh & Thomas Rohlen
Katherine & Laurence Ronan
Susan & John Rothchild
Kim Rowley
Royal Botanic Garden Sydney
Camila Salvisberg & Solomon Barnett
Mary & Federico J. Sánchez
Katherine & John Scarborough

Karen & Paul Schlather
Patricia O. Schleuning
Stephanie & Ken Schwartz
Hillary & Constantine Scurtis
Martin E. Segal & Yolande Rodier
Joan & Lynn Seppala
Shioi Construction Inc.
Susannah M. & John K. Shubin
Debra G. Speyer
Penelope & E. Roe Stamps
Marilyn & Tom Sumner
Noni Sweet
Phyllis E. Swindells
Syngenta Hawaii, LLC.
Jeremy I. Tabak
Linda & Leighton Taylor
Jocelyn D. Tennille
The Good Works Foundation
Mary & Ken Thompson
Vann & Parker Thomson
Oakleigh Thorne
Tire Warehouse Kauai
Michaline & Matthew Todd
Cathy & Michael Topham
Mary & Michael Trueblood
Christen & Christopher D. Turner
Christiane & Christopher Tyson
Linda & Joe Upton
Lenita C. & Henk van der Werff
Chrystal Vang
Virginia & Sander Vanocur
Pauline & Melvin Ventura
Susie & Walid Wahab
Heather Waters
Indru & Gulab Watumull
Paul Weaver
Sharron Weber
Mary E. Weinmann
Roya & Henry Weyerhaeuser
Johnalynn & Charles (Chipper)
Wichman, Jr.
Myron A. Wick, III
Jane Woodward
Georgene E. & Edwin Y. Yamada

\$5,000-\$9,999

Anonymous (1)
Stephanie Lerner Ansin & Spencer
Stewart
Bilzin Sumberg Baena Price &
Axelrod LLP
Lauran Bromley
Andre Carothers
Center For Cultural & Technical
Interchange Between E&W Inc
Joan G. Evans
Harriet S. & Eric P. Fraunfelter

Gina & Peter Gardner
Sarah & David Goodale
Roberta Haas
Cara Gould Holmberg & David
Holmberg
Julius Lewis
Donald R. Logan
Lin Lougheed
Robert Malott
George G. Matthews
New Place Fund
Jill Penman & Matthew Kujawa
Annie Seipp
Louise M. & Richard A. Steenblik
The Bromley Family Charitable Fund
Catherine & Michael Topham
Christina B. & Reed C. Wilson



\$10,000-\$24,999

Patricia P. & Harlan C. Amstutz
Georgette F. Ballance
Baptist Health South Florida
Constance L. & Thomas Broz
Martha W. Cox
Mary M. Cudahy
Carol D. & Martin Dickinson
Jan D. Elliott
Andrea Fahnestock & George
Hambrecht
Adaline H. Frelinghuysen
Simon Gerson
Laura Ray & Donald W. Y. Goo
Katherine & Scott Grainger
Priscilla & James Growney
Diane B. Heller
Molly & Jock Hooper
Mary Hulitar

Institute of International Education
of the Christensen Fund
Kawailoa Development, LLC
Cynthia King & Pierre Bellamare
Brigitte & James Kishlar
Koloa Rum Company
Susan E. Lynch
Anne MacDonald-Korth &
James Korth
Betsy K. Matthews
Margaret McDermott
Marion S. & David G. Meissner
Patagonia Works
Carol & David Pratt
Teita & Thomas L. Reveley
Diane & Michael Rosenberg
Roberta & Roger Rosenberger
Cynthia & Raymond L. Salley
Patricia W. Sheehan
Carey & Anthony Sutton
Heather & Richard Waters
The S.W. Wilcox Trust

\$25,000-\$49,999

Leslie M. & David H. Clarke
Ceseli & Hugh Foster
Georgiana Ducas Charitable Trust
Glenn & Jane Goldsmith
Mary & James W. Griffith, Jr.
Ruth F. & Benjamin C. Hammett
Heather & Patrick Henry
Thomas D. Hewitt
Katherine G. & Wayne Richardson
Catherine S. Rodriguez
Barbara K. Sweet
Jeanne R. & Charles R. Wichman

\$50,000-\$99,999

Bessemer Trust
*Phyllis A. Callaway
Elizabeth H. & Douglas
McBryde Kinney
Cynthia & Merrill L. Magowan
William R. Kenan, Jr. Charitable Trust
Judy C. Webb
John D. Weeden
Nicole S. Williams &
Lawrence L. Becker

\$100,000 & UP

Motoko T. & Gordon L. Deane
Thomas S. Kenan, III



FOUNDATIONS

Anonymous (7)
Acacia Foundation
AD International, LLC
Alexander & Baldwin Foundation
Annie Sinclair Knudsen Memorial
Fund of the Hawai'i Community
Foundation
Atherton Family Foundation
Bristol-Myers Squibb Foundation
Catherine S. Rodriguez Family
Foundation
Cobb Family Foundation, Inc.
Colcom Foundation
Cox Foundation, Inc.
Edward & Nancy Connor Fund at
the East Bay Community Fdn
Engemann Family Foundation
First Hawaiian Bank Foundation
Florida International University
Foundation, Inc.
Foster Family Foundation
Fred Baldwin Memorial Foundation
Frost Family Fund of the Hawai'i
Community Foundation
Full Circle Fund of RSF Social Finance
GE Foundation
George P. & Ida Tenney Castle Fund
Goodale Family Fund of the Hawai'i
Community Foundation
Growney Family Fund of the Hawai'i
Community Foundation
GuavaGar Westfall Kauai'i Fund of
the Hawai'i Community Foundation
Harold K.L. Castle Foundation
Hawai'i Community Foundation
Hawai'i Conservation Alliance
Foundation
James Deering Danielson Foundation
Japan Ecology Foundation
Jhamandas Watumull Fund
Kaua'i Island Utility Cooperative

Korth Family Foundation Inc
Laila Twigg-Smith Art Fund
Malott Family Foundation
Marisla Foundation
Matson Foundation
MillsDavis Fund of the Edwin W. &
Catherine M. Davis Fdn
National Geographic Society
North Kauai Fund of the Hawai'i
Community Foundation
Office of Hawaiian Affairs
Omidyar 'Ohana Fund of the Hawai'i
Community Foundation
Pfizer Foundation Matching Gifts
Program
Phyllis H. & William H. Evans
Charitable Foundation
Qualcomm Charitable Foundation
Raven Foundation
Reuben H. Fleet Foundation Fund at
the San Diego Foundation
Stamps Family Charitable
Foundation, Inc.
Taniguchi Deane Family Foundation
The Beatrice Bowles Charitable
Fund at Schwab Charitable
The Bromley Family Charitable Fund
The Bullitt Foundation
The Ceres Trust
The Charles Engelhard Foundation
The Copriviza Family Charitable Fund
The Donald R. Logan Charitable
Fund at Schwab Charitable
The Good Works Foundation
The Henry Foundation
The Joy & Lief Erickson Foundation
The Miami Foundation
The Mohamed bin Zayed Species
Conservation Fund
The Nelson Mead Fund
The Rhoades Foundation
The Rob Evans Charitable Fund of
Horizons Foundation
The San Diego Foundation
The Thomas S. Kenan Foundation, Inc.
Traut Carson Fund of the Hawai'i
Community Foundation
Tunu Puri Charitable Foundation Inc.
Victoria S. & Bradley L. Geist
Foundation
Virginia & Colin Lennox Botanical
Research Trust Fund of the Hawai'i
Community Foundation
Waimakua Foundation
Wayne & Wendy Holman
Foundation
William S. & Janice R. Anderson
Foundation

GOVERNMENT GRANTS

British Columbia Institute of
Technology
County of Kauai
County of Maui, OED
Florida Department of State
Miami-Dade County, Florida

GIFTS-IN-KIND

Allison Langer Photography
American Airlines
Anthuriums and More
Aquamarine at Fontainebleau
Arborcare, Inc.
Aunty Liliko'i Passion Fruit Products
Blue Ginger
Botanics Wholesale, Inc.
Brennecke's Beach Broiler
Bullis Bromeliads
Cinnante Photography
Cliff & B Jewelry
Country French
Detlev Salon & Spa
Diageo
Dragonfly Expeditions
Essential Massage
Galloway Farm Nursery
Garden Ponds
Goldsmiths Kauai, Inc.
Grand Wailea
Gretchen Scott Designs
Hana Ranch Store
Hanalei Colony Resort
Harry's Pizzeria
Hirni's wayside Garden Florist
History Miami
Holo Holo Charters
Grand Hyatt Kaua'i Resort & Spa
Image Beauty Spa
Isabel Fine Home Accessories
Jaguar Hospitality Group
Joe's on the Green
Johari Hair Cuttery & Health
Emporium
Kaua'i Marriott Resort
Kauai Beer Co.
Kauai Nursery & Landscaping, Inc.
Kauai Paradise Heirlooms LLC
Kauai Seascapes Nursey, Inc.
Kikiaola Construction Co.
Ko'a Kea Hotel & Resort
Koloa Landing Resort at Poipu
Koloa Rum Company
Kristine Michael
Krystal Sasso Jewelry Designs
Lappert's Hawaii

Lawai Beach Resort
Lulu in the Grove
Maile Lani
Mama's Fish House Restaurant & Inn
Market Boutique
Mary Louise Designs, Inc.
Mayfair Hotel & Spa
Mena Catering
Merriman's Fish House
Mill House Maui
No Ka Oi Landscape Services
Oasis Collection
Orchid Alley Kauai
Outfitters Kauai, Ltd.
Pecans Day Spa
Pilates in the Grove
Plumeria Sun
Poipu Bay Golf Course
RF Orchids, Inc.
Royal Bathroom
Royal Caribbean International
Sapore de Mare
Schneider Eye Care
Shoots & Roots Bitter
Skyline Eco-Adventures
Sonesta Hotel & Suites Coconut Grove
The St. Regis Princeville Resort
Sueno Del Mar Resort
Tabora Gallery
Tasting Kauai.com
TD Food Group, Inc.
Ted Baker London
The Beach House Restaurant
The Club at Kukui'ula
The Hanalei Dolphin Restaurant
Travaasa Experiential Resorts
Unearthed Vintage
Van Moy Associates
Via Verdi Cucina Rustica
Waimea Plantation Cottages
Whole Foods Market Hawaii
Zoo Miami

TRIBUTE GIFTS

In Honor of Suzanne Ellis
Michael Canorro
Steven Thomas Thatcher

In Memory of Ms. Gail S. Gilman
Lynne S. & Glenn N. Ebisui

In Honor of Mr. Thomas D. Hewitt
Cathy & Herndon Thomason

In Honor of Mrs. Betsy K. Matthews
Anonymous

In Memory of Mrs. Carol A. Nance
1st Community Insurance Services
Joyce G. Anglemeyer

Esther Back
Roy Buduan
California El Camino CPCU
Society Chapter
Hazel & Gordon Coates
Suzanne & Thomas Ellis
Rebecca K. & Richard W. Fries
Sandra L. & Reginald P. Gage
Glenn & Jane Goldsmith
Edna & Keith Holdeman
Mildred P. Kattan
Janice Lefever
Juanita Lefever
Rae & Edward P. Matthews
Edith A. Moe
Patti Pantone
Emma Reardon
Margit & Janos Samu
Marilyn Seligman
Stormy Bradley-Vasta &
Gaetano Vasta
Georgene E. & Edwin Y. Yamada

In Honor of Mr. Robert Nishek
David Goldhaber

In Memory of John H. R. Plews
Keith Robinson

In Honor of Carol Pratt's Birthday
Anonymous

In Honor of Mr. & Mrs. David W. Pratt
Sandra & Wilcox Patterson

In Memory of Mrs. Lillian C. Sawai
Jan Asari
Susan & Roy Asato
Carlsmith Ball LLP
Patricia & Arthur Yotsuya

In Memory of Mr. Hideo Teshima
Yvonne N. & Donald S. Sakata

In Honor of Charles (Chipper) R. Wichman, Jr.
Doris & Richard Cellarius
William Garnett

In Honor of Charles R. Wichman
Johnalynn & Charles (Chipper)
Wichman, Jr.

In Honor of Jeanne R. Wichman
Johnalynn & Charles (Chipper)
Wichman, Jr.

In Memory of Elizabeth Dillingham Wick
Myron A. Wick, III

* Denotes anonymous donor



Thank You to all our 2016 Volunteers

Our thanks to all of our
amazing volunteers
who generously gave
their time and service to
NTBG throughout 2016.

Joan Aaanaavi
Tom Abell
Nilda Acevedo
Patty Adams
Susan Adams
Clarence Aki
Phyllis Albert
Barbara Alexander
Henry Alexander
Nancy Alexander
Rick Alexander
John Aloian
Sandy Ambrose
Todd Anderson
Doug Archibald
Jana Argersinger
Cyd Arrington
Tammy Ashworth
Susan Atherley
Richard Atwell
John Bach
Carmen Baires-Smith
Ginna Baldassarre
Edie Balik
Georgette Ballance
Lynn Barker
Brenda Barnard
Michelle Barros
Gideau Bassing
Autumn Bauman
Jennifer Bauman
Jennifer Bauman
Gail Beckham
Trevor Bellwood
Flossie Bergum
Rod Bergum
Roger Berrier
Barbara Bettes
Kevin Blank
Patti Blank
Mark Blanyney-Moore

Audie Blevins
Johanna Boccardo
Carol Bockman
Jeanette Bonilla
Kayla Bonnette
Christina Boudreau
TeeJay Boudreau
Joan Boxall
Ken Boxall
Gianna Brach
Karen Bradley
Stormy Bradley
Kathleen Bravo
Diane Breitenfeld
Dorval Breitenfeld
Neil Brosnahan
Love Brown
Melanie Browne
Giselle Bryant
Kathryn Buder
Merilee Buehler
Alejandra Bunster
Annaka Burlingame
Bill Butler
Yvonne Byers
Rhain Campbell
Won Campilango
Catherine Cannon
Katie Cannon
Veronica Carillo
Jesse Castro
Joyce Caudell
Diane Chait
Ben Chester
Chris Chilton
Kama Chock
Marion Chow
Rosario Chozas
Abishai Christensen
Bob Clabo
Jessica Clabo

Edith Clark
Betty Clifford
Sundee Cline
Maggie Clute
Gordon Coates
Hazel Coates
Taylor Cole
Laurel Coleman
Makara Contrades
Kathy Cooper
George Crabb
Laura Crabb
Norma Craig
Dan Crnkovich
Andy Cullison
Kahealani Cummings
Maria Vitoria Da Matta
Marianne Daniels
Connor Darnbrough
Shirley Daughterman
Connor Deacon
Susan Deans
Eva DeColigny
Triston Dedevla
Susan Dehns
Jerry Delgado
Debbie Devine
John Devine
Diane Dickhut
Lyman Diego
Pam Dohrman
Dale Dorman
Maureen Dorman
David Dow
Julie Dow
Dianne Drought
Ruby Duby
Deborah Duda
Denise Duenas
John Dumas
Lori Dunham

Linda Dupley-McLellan
Cindy Dupree-Thompson
Doug Duvachelle
Polly Edwards
Jo Elliot
Debra Ellis
Suzanne Ellis
Ana Estevez
Candice Ethridge
Patricia Fallbeck
Denise Farwell
Ken Fasig
Harriett Fenerty
David Fenske
Dixie Fenske
Maegan Fernandez
Tina Ferrera
Patzy Finney
Candace Firth
Sharon Fitzgerald
Heather Flood
Sheila Fode
Judith Foley
Missy Foley
Pat Foster
Megan Fox
Andrew Foy
Carla Freeman
Susan Fridley
Becky Fries
Naomi Frisch
Margie Funk
Eman Gabour
Reg Gage
Sandy Gage
Francesca Galliano
Justin Ganam
Misty Gardener
Anderson Garner
Adrianne Garska
Susie Gates

Lynn Geiger
Lois George
Barney Gerber
Amy Gibbs
Amy Gibbs
Jann Gibbs
Lock Gibbs
Alicia Gilbert
Bill Gilbert
Cynthia Gilbert
Sandi Glandon
Rick Golba
Jane Goldsmith
Kawika Goodale
Meghan Goodale
Marissa Gordon
Ed Grattan
Melissa Gregory
Donna Grey
Emery Griffin-Noyes
Dale Grooms
Jim Grueber
John Grunwald
Autumn Haag
Kathy Hadwin
Carol Hamamura
Abegail Hammun
Daughter Handke
Megan Handke
Linda Hansford
Linda Hansford
Diane Hartman
Lois Hartman
Jannin Hashizume
Timoteo Haulen
Nancy Hawkins
Susan Hawkins
Frank Hay
Judy Hayes
Elaine Healy
Sheila Heathcote

Yeneidys Hernandez
Margery Hexton
Anissa Hexton
Jared Hiniker
Debbie Hoffnagel
Edna Holdeman
Keith Holdeman
Suzi Holling
Tom Holling
Louise Hoops
Sara Hopps
Paul Horner
Nina Houghton
Dave Hubbard
Kelly Huff
Karen Huntsberger
Chris Hurd
Katheleen Hurd
Greg Iten
Debra Jackson
Steve Jackson
Teresa Jackson
Verna James
Eve Jasper
Justine Jasper
Linda Jasper
Mick Jasper
Howard Jennings
Laura Jennings
Ken Johnson
Loren Johnson
Russ Josephson
Marisa Kagan
Rogerlyn Kanealii
Makana Kaneko
Stella Kaneko
Christopher Kaplanis
Freddie Kaufman
Rose Kauai
Kimo Keawe
Martha Kent

Sheila Kent
Baba Khalsa
Ian Kidd
Ian Kidd
Nancy Kidd
Nancy Kidd
Angela Kim
Isabel Kimball
Andrew King
Devorah King
Monica King
Terry Kirk
Maggie Knapp
Loren Kohnfelder
Keith Koplan
Merle Koplan
Kirstin Krader
Maleke Kudulana
Mikiala Kudulana
Savitri Kumaran
Judy Lacey
Eleanor Lahn
Bill Laidlaw
Lucia Laidlaw
Stan Lake
Joan Langan
Sally Lange
Ikaika Lanning
Lynda LaRocca
Stephanie Laverick
Gary Ledesma
David Lee
Michelle Lemay
Ron Lemay
John Lemes
David Leopold
Jeremy Lester
April Lewis
April Lewis
Dot Lewis
Megan Liddell

Eylse Linack
Karmanu Lind
Eliza Linser
Lora Livingston
Elise Lockton
Bob Long
Gertrude Longston
John Longston
Adriana Loomis
Ginette Lorence
Victoria Love
Alan Lubanes
Barbara Lubanes
Sondra Lund
Justin Lyon
JoAnne Machin
Arlene MacPhail
Kathi Maddox
Tracy Magellan
Rebekah Magers
Estelita Maglinong
Elizabeth Mahaffey
Kenne Mahoney
Liana Maka
Victoria Mannisto
Katie Maroney
Nellie Marshall Torres
Jon Masaki
Vanessa Massoud
Uncle Masu
Grimsley Matkov
Susan Matsunga
Kevin Matteson
Aileen Mawae
Francis Maximio
Kathy Mayer
Moirra McBride
Connor McCarty
Garret McCarty
Kathi McCarty
Walt McCoy

KrisEmily McCrory
 Marisa McDaniel
 Mary McElligott
 Bob McGinty
 Margaret McGinty
 Bill McIntyre
 Jim McLellan
 Linda McLellan
 Pamela McMillen
 Richard McSwain
 Julie Meher
 Mary Kae Meloleck
 Nancy Merrill
 Dianna Meyer
 Ira Meyer
 Rayme Meyer
 Emily Mielke
 Emily Mielke
 Dave Miller
 Mayumi Minta
 William Mitchell
 Anne Miyamoto
 Edie Moe
 Fernandez Moegan
 Surina Mohr
 Teddy Moline
 Dawn Mones
 Roberto Montoya
 Suzanne Morris
 Deanna Moss
 Albert Munoz
 Tom Myers
 A.P. Nagie
 Kalika Nakooka
 Margaret Nee
 Karen Newton
 Virgil Newton
 Tim Nicholson
 Shivani Nneka
 Maryann Nordwall
 Court Norris
 Thea Oberlander
 Shanna O'Brien
 Jaime Odabachian
 Noreen Ohai-Daniels
 Patricia Olsson
 Linda O'Neil
 Paige O'Neil
 Steven O'Neil
 Noelani Ornellas
 Jake Ozaki
 Joyce Packard
 Kaitlyn Paiton
 Kaitlyn Paiton
 John Palenchar
 Joni Patterson
 Jan Peace
 Jill Penman
 Helen Percival
 Amy Peterson
 Marie Petro
 Anneke Pickering
 John Pickering

Lori Pittsley
 Ana Plasencia
 Caroline Plaza
 David Pratt
 Ilka Priest
 Savoy Pritchik
 Sharyn Privett
 Tom Privett
 Emmy Purainer
 Val Quayle
 Mark Query
 Alex Quintana
 Matt Ramirez
 Nikki Ramos
 Ariel Ramseth
 Aurora Ramseth
 Margaret Rangel
 Bill Rapanos
 Marilyn Rapanos
 Chris Rawls
 Edna Ray
 Melinda Rayne
 Ernie Reasoner
 Barbara Recchia
 Rosemary Rector
 Adair Reeves
 Lisa Remeny
 Yvonne Revitt
 Billie Richardson
 Bruce Richardson
 Kathy Richardson
 Mindy Richardson
 Tesla Rider
 Novelia Rivera
 Sally Rizzo
 Seth Roabe
 Jan Roberta
 Nancy Roberts
 Elizabeth Robinson
 Nancy Roblin
 Richard Roblin
 Jill Rockenstein
 John Rockenstein
 Morgan Rockenstein
 Nancy Rolan
 Megan Roland
 Chelsea Rollins
 Maile Rollins
 Mary Rose
 Diane Rosenberg
 Roger Rosenberger
 Ruth Rosenblatt
 Dale Rosenfeld
 Kim Rowley
 Jaya Ruiz-Acantilado
 Toni Saul
 Selma Sauve
 Karen Schlather
 Paul Schlather
 Gretchen Schmidt
 Jane Schmitt
 Mica Schoedre
 Larry Schokman

Colleen Schokman
 Eleanore Seeley
 Kiana Seigel
 Cary Self
 Emma Lou Sharrar
 Shale Shore
 Gary Shores
 Peter Siegel
 Sima Siegel
 Ed Sills
 Alan Silva
 Monica Silva
 John Skinner
 Cynthia Smith
 Florence Smith
 Keith Smith
 Richard Smith
 Lauren Snider
 Louise Snider
 Betty Snyder
 Kailee Soares
 Lava Soma
 Phyllis Sommers
 Tee Sorrentino
 Mitch Sowl
 Peggy Sowl
 Joan Spector
 Julie Spielman
 Carina Squire
 Genoa Starrs
 Josephine Steciuk
 Chris Steen
 Linda Steen
 Cory Steinmetz
 Pat Sterrett
 Tracy Sterrett
 Jean Stewart
 Marianne Swan
 Rob Swift
 Sara Switzer
 Renee Takahashi
 Suzuki Takayuki
 Cindy Taylor
 Josiah Taylor
 Lynn Taylor
 Christy Taylor-Parsil
 Patrick Thesken
 Gina Thomas
 Kate Thome
 Carol Thompson
 Ken Thompson
 Robert Thompson
 Stephanie Thorman
 Bonita Thornsby
 Keane Tibon
 Tom Timmons
 Cathy Togioka
 Ashly Trask
 Randy Umetsu
 Paz Valdez
 Scott Van De Verg
 Amy Van Horn
 Gaetano Vasta

Ron Venneman
 Titske Versteeg
 Cathy Volmet
 Bourgi Von trapp
 Seana Walsh
 Jackie Wang
 Pamela Warner
 Claudia Warszawski
 Dave Waterbury
 Ruth Waterbury
 Carol Watson
 Grace Watson
 Joanne Watson
 Joanne Watson
 Keoni Watson
 Sue Webert
 Linda Westgate
 Mark Westgate
 Zara Wetzel
 Zena Wetzel
 Frankie White
 Theresa Wiederoder
 Bill Wilcox
 Donna Wilcox
 Gary Williams
 Patricia Williams
 Josh Wittersheim
 Denese Wojcik
 Canyon Wolkis
 Krista Wolkis
 Marilyn Woodger
 Diane Worthington
 Lori Wright
 Lori Wright
 John Wrovkiewicz
 Sara Wrovkiewicz
 Ed Yamada
 Georgene Yamada
 Rachel Yamaguchi
 Phyllis Yount
 Barbara Zins
 Mike Zins
 Barbara Zuuring
 Hans Zuuring
 Apple, Inc. Volunteers
 Cornell Alumni Group
 Eleele Schools
 Horticulture Volunteers
 Kahanu Volunteers
 Kalaheo Schools
 Kampong Volunteers
 Kauai Conservation Alliance
 Kauai Drug Court
 Kauai Southshore
 Volunteers
 Limahuli Schools
 Limahuli Volunteer
 Malama Kauai
 Pacific Missile Range Facility
 Waipa Foundation

How you can make a difference...

Everyone can make a difference to help tropical plant conservation, research, horticulture and education at the National Tropical Botanical Garden.

- * A gift to the Tropical Garden Fund provides essential support for all of the Garden's programs in horticulture, education, and tropical plant research and conservation. To make a contribution or for more information, please visit our website at ntbg.org/donate or contact Development at 808-332-7324 ext. 211.
- * Double or triple your support with a Corporate Matching Gift. Many businesses provide matching funds to amplify your support. Please contact your company's human resources department or call us. We can help you determine if matching funds are available.
- * Become a Business Partner and support tropical plant conservation. Corporate environmental responsibility is more important than ever to attract the best employees and customers. We would love to talk to you about how you might partner with us. Become a Corporate Partner or Member, make a donation, donate a product or service, sponsor an event, arrange an employee volunteer day or provide a grant. For more information, please contact Heidi Whitman, Director of Philanthropy at 808-320-0748 or hwhitman@ntbg.org
- * Become a Volunteer by contacting us at volunteers@ntbg.org We will match your interests, abilities, and availability with the Garden's current volunteer needs. By becoming a volunteer you will be making a substantial contribution to the preservation and knowledge of tropical plants and ecosystems.
- * Join the Council of Fellows by making a tax-deductible gift of \$1,500 or more. In addition to Member benefits, Fellows receive invitations to exclusive events and travel opportunities. For more information, please call Suzy May, Assistant Director of Philanthropy at 808-332-7324 ext. 238, or smay@ntbg.org
- * Become a Member and enjoy benefits that include free admission for self-guided tours, invitations to events, lectures, and workshops, discounts at Garden shops and our membership newsletter, The Bulletin. Please contact Tanya Ramseth, Membership Manager, at 808-332-7324, ext. 241 or members@ntbg.org
- * Include the Garden in your estate plans and become a member of the NTBG Legacy Society. Bequests and other planned gifts support the Garden's endowment and provide critical funding for the Garden's future. Members of the NTBG Legacy Society receive invitations to events. More information can be found at ntbggiving.org or please contact Heidi Whitman, Director of Philanthropy at 808-320-0748 or hwhitman@ntbg.org

The Mission of the National Tropical Botanical Garden is to enrich life through discovery, scientific research, conservation, and education by perpetuating the survival of plants, ecosystems, and cultural knowledge of tropical regions.

National Tropical Botanical Garden

3530 Papalina Rd. | Kalaheo, HI 96741

www.ntbg.org

NTBG is the only botanical garden chartered by the United States Congress. Established in 1964, the Garden is dedicated to the preservation and survival of tropical plants, emphasizing rare and endangered species. NTBG is a 501 (c) (3) nonprofit corporation. We are not operated by the federal government and rely on the much-appreciated support of members and donors like you to carry out our mission.



www.facebook.com/saveplants



twitter.com/ntbg



www.youtube.com/ntbgsaveplants



[instagram.com/ntbg#](https://www.instagram.com/ntbg#)





National Tropical Botanical Garden

3530 Papalina Road
Kalāheo, Hawai'i 96741 USA



BOTANICAL COORDINATOR MERLIN
EDMONDS COLLECTS SEEDS FROM EURYA
SANDWICENSIS IN THE UPPER LIMAULI
PRESERVE. PHOTO BY SEANA WALSH