



---

NATIONAL TROPICAL BOTANICAL GARDEN

---

# ANNUAL REPORT

---

# 2014

---

*Celebrating 50 Years*

**MESSAGE FROM CHIPPER WICHMAN AND MERRILL MAGOWAN**



Chipper Wichman



Merrill Magowan

We are pleased to share with our supporters National Tropical Botanical Garden’s 2014 Annual Report. The year was a milestone for NTBG that marked 50 years since we received our Congressional Charter! As you read through this beautiful report you will begin to see the impact that our founders envisioned when they petitioned Congress in the early 1960s. At 50, NTBG has grown and matured into a collection of gardens of exceptional beauty and mission-driven programs whose impact is felt around the world.

The celebration of our actual “birthday” on August 19, 2014, stands out as one of the highlights of our 50th year. More than 400 people gathered to be part of our celebration, which included the dedication of the Inouye Overlook, the opening of the Biodiversity Trail, aerial performers, and the cutting of a large birthday cake with a machete! It was a day that we will all remember for a long time. What made it even more memorable was that it marked the point at which we began to implement a new business model that will help to sustain NTBG in our second fifty years. NTBG’s capital campaign is raising money to transform the McBryde Garden – our flagship garden – into a cutting-edge environmental education experience for our visitors. The opening of the Biodiversity Trail marks the first of a series of improvements that we will construct over the next several years that will make McBryde Garden more accessible, more educational, and more fun! The

improvements will engage the hearts and minds of our visitors and leave them with a deeper understanding of the importance of tropical plants and the mission-driven work NTBG undertakes. In turn, this will generate new revenue, new members and new donors to build a more sustainable foundation for NTBG’s future.

A second highlight of the year was the international symposium – “Agents of Change” – that we held in Washington, DC, in October. Co-sponsored by the National Museum of Natural History it brought together botanical garden leaders, scientists and researchers to discuss the role of botanic gardens in the 21st century. Leading up to the symposium, National Geographic Society published editorials from key NTBG staff on its website that reached hundreds of thousands of readers world-wide. Following the symposium we had a gala dinner with Thomas L. Friedman, internationally renowned author, reporter and New York Times columnist as the dinner speaker. It was an extraordinary way to celebrate our origins in Washington, DC, and the impact that gardens like NTBG are having addressing some of the world’s most pressing problems.

We invite you to read about the highlights of our 50th anniversary year and the important role that each of our five, very special and very different, gardens play in shaping NTBG’s future.

A handwritten signature in black ink, appearing to read 'Chipper Wichman'.

Chipper Wichman  
Chief Executive Officer and Director

A handwritten signature in black ink, appearing to read 'Merrill L. Magowan'.

Merrill Magowan  
Chairman of the Board of Trustees



# FIFTY

**2014** was a monumental year for us as we marked our 50th anniversary with celebratory events and public offerings, using the occasion to reflect on all we have achieved, while looking ahead at the important work that remains.

It has been half a century since our organization was created by a Congressional Charter on August 19, 1964. That event was remembered 50 years to the day with an open house in our flagship McBryde Garden that included celebratory speeches, flowers, and the blessing of a passing shower. Trees were festooned with hanging orchids and a newly completed trail highlighting biodiversity was lined with Garden staff, Trustees, Fellows, volunteers, and

supporters from the community all in high spirits as we marked our first half century. In 2014 we had much to reflect on and much to celebrate, but also much to consider as we recognized the urgency of work in the next 50 years. In the face of unprecedented global environmental challenges, we are eager to move forward. We also believe that broadening our base of supporters in the local, national, and international community is critical to ensuring we can remain sustainable and productive in the years ahead.

With this in mind, we invite you to read in the following pages how we celebrated our past and all that we have achieved as our extended NTBG 'ohana (family) boldly steps forward into our next 50 years.







## SHOW

Since its completion in 2008, the Juliet Rice Wichman Botanical Research Center (BRC) has provided work, study, and archival space for our Science and Conservation departments as well as visiting researchers, students, and the public. Today this state-of-the-art LEED Gold certified building houses a herbarium with approximately 72,000 specimens, a seed bank, and a botanical library.

Our peers recognize the BRC as an exceptional facility, but it's not widely known outside of the scientific community. In an effort to increase the visibility of the research center, while sharing our rarely-seen, valuable resources with a new audience, we hosted two art exhibitions inside the BRC as part of our anniversary celebrations.

The BRC is home to a collection of more than 5,000 historical books, exceptionally rare volumes of botanical literature, and printed works dating back to the 16th century. Among our collection is a complete set (one of only 100 produced) of original hand-colored botanical prints made from engraved cooperplates based on 18th century watercolors.

In painstaking detail the prints depict plants discovered and collected by Swedish naturalist Daniel Solander and British botanist Sir Joseph Banks who accompanied James Cook on his first voyage across the Pacific (1768-1771).

For the "Voyage of Discovery Art Exhibition" we selected 30 prints which were displayed inside the BRC. Following a private reception, the exhibition was open free to the public for two months during which more than 1,000 people visited the BRC, most for the first time. Viewers included residents, island visitors, and people who traveled from neighboring islands to see this rare exhibit that proved so popular it was extended an additional month.

In June we presented a second exhibition in the BRC – "The Living Endemic Birds of Hawai'i." Like "Voyage of Discovery," the public was invited to view the exhibit of 33 paintings by celebrated artist Marian Berger, who painted nearly four dozen birds endemic to Hawai'i. Rendered in the style of famed ornithologist John James Audubon, Berger's watercolor portraits depict Hawaiian birds such as honeycreepers, finches, stilts, and the Hawaiian crow in their natural habitat. The exhibition, displayed in its entirety for the first time, was visited by more than 600 people.







## SONG

In April we took our celebrations outdoors as we hosted “Musical Legends in the Garden,” a concert that featured eight of Hawai‘i’s top musical acts. Along with Hawaiian Legends Ledward Ka‘apana and Mike Ka‘awa, the line-up included half a dozen of Hawai‘i’s favorite musicians and headlining act Jerry Douglas. A 13-time Grammy Award winner, Douglas is a master of the dobro, a resonator guitar popular in country, blues, and bluegrass music.

“Musical Legends” was held in the open meadow beside our Southshore Visitors Center on a flawless spring day. The all-afternoon event was attended by some 1,000 people including our staff, members, Trustees, as well as Kaua‘i’s Mayor Bernard Carvalho and Hawai‘i’s Governor Neil Abercrombie.

Food trucks on the edge of the meadow sold snacks and refreshments, allowing concert goers to have lunch in the shade of monkey pod trees as they enjoyed an exciting mix of slack key guitar, ‘ukulele, Hawaiian-influenced blues, and hula performances. After Jerry Douglas’s set, the entire line-up gathered on stage for a kanikapila (impromptu jam) during which the musicians clearly had as much fun as the audience, some of whom had taken to dancing barefoot on the grass.

“Musical Legends” was widely hailed as a success not only for its entertainment value but also for introducing NTBG to a new audience who surely will return to the garden again and again.



# CELEBRATION

Much of the first half of 2014 saw our staff working furiously to complete a major new feature in the McBryde Garden – an 800-foot-long meandering ‘Biodiversity Trail’ designed to tell the story of 450 million years of plant life and botanical evolution. The trail was formally opened to the public on the 19th of August – 50 years to the day since the signing of our Congressional Charter. For staff, volunteers, and supporters, this was the big day when we came together to celebrate all that had been accomplished and renew our commitment to the Garden’s founding principles of plant conservation, research, and education.



On that sunny summer day, we gathered along the newly completed Biodiversity Trail beneath towering trees decorated with hanging orchids and new plantings lining the trail. The celebration began as local school children formed a giant “50,” which was captured with aerial photography.

Some 400 people gathered in McBryde Garden as our President and CEO Chipper Wichman was joined by the Garden’s new Chairman of the Board Tom Hewitt and visiting dignitaries Kaua’i Mayor Bernard Carvalho and Irene Hirano, the wife of the late Sen. Daniel Inouye, a life-long friend and supporter of the Garden.

After introducing a scenic lookout named in honor of Sen. Inouye, Chipper led all in attendance along the first public walk down the new trail to an expansive part of the garden for a celebratory outdoor lunch, speeches, and “50th birthday” cake.





# SCIENCE

Half a century ago, after a decades-long effort by like-minded individuals who sought the creation of a national tropical botanical garden, our organization was established on August 19, 1964, when President Lyndon Johnson signed our Congressional Charter into law in Washington, DC. As such it was fitting that we chose to hold our autumn Board of Trustees meeting in the nation's capital. In recognition of this momentous year, and with the goal of bringing together the leading figures in science, conservation, and botanical gardens to discuss the planet's most urgent environmental, cultural, and hunger-related challenges, we organized "Agents of Change: Botanic Gardens in the 21st Century," a one-day international symposium that followed our Board of Trustees meetings in Washington.

"Agents of Change" was presented in partnership with the Department of Botany, Smithsonian Museum of Natural History, bringing together two dozen speakers to discuss four key topics:

- Conserving plants in a changing world;
- How to feed a global population of 9 billion;
- Biocultural conservation; and
- Operational sustainability of botanical gardens.

In addition to our staff scientists, the symposium featured respected leaders from esteemed organizations such as the Royal Botanic Gardens, Kew, the Royal Botanic Garden Edinburgh, the Botanical Research Institute of Texas, the Chicago Botanic Garden, the Smithsonian National Museum of Natural History, and others.

Dr. Peter Raven and Professor Sir Ghilleen Prance, FRS, presented the symposium's opening and closing remarks, while Sir Tim Smit, KBE, co-founder of the United Kingdom's Eden Project, presented the keynote address.

The symposium was followed by an NTBG-hosted dinner that included a talk by New York Times columnist Thomas L. Friedman on what he had learned about geopolitics and economics from nature and the environment.







# SCULPTURE

As we celebrated all year, we also actively strived to reach new audiences with whom we can partner for the vital work ahead. We found one of the best ways to accomplish this was by connecting with our community through art. After we extended an invitation to renowned environmental artist Patrick Dougherty, we agreed on November for a three week artist-in-residency.

Known for his large-scale stick sculptures (some as big as a cottage), Dougherty has created over 250 such sculptures, or “stickworks” as he calls them, around the world. During his three-week stay Patrick worked daily with our staff and some 100 volunteers to build a fantastic circular structure with pillars, doorways, windows and a 25-foot-high dome that opens to a leafy canopy overhead.

In all, more than 1,000 hours of volunteer labor helped clear brush, collect material, and strip the leaves and small branches from dozens of truckloads of potentially invasive plants like ironwood, bamboo and eucalyptus that were growing on steep slopes and along the periphery of McBryde Garden.

The stickwork project proved to be an excellent way to introduce new people to the Garden, while providing the opportunity for our staff to interact in a refreshingly new setting, in a way that was cooperative, creative, and fun.

Dubbed “the Birthday Palace” in honor of our anniversary, the piece was completed using only sticks, branches, and saplings. Like Dougherty’s other sculptures, it is expected to remain standing for one to two years to delight and inspire thousands.





# SOCIAL

**T**hanks to the proliferation of mobile communications and social media, we've been able to share more news, photos, and video with more people than ever before. Throughout our Golden Anniversary, we posted celebration updates on Facebook, Twitter, YouTube, and in our e-newsletter "GoBotanical!"

In addition to sharing our anniversary news and ongoing work to save plants, we took advantage of the banner year to present an online feature called 'Faces of NTBG,' which introduces some of our staff through short-autobiographic profiles. You'll find these profiles on our Facebook and Twitter pages (#NTBGFaces).



As we begin our next 50 years, we invite you to get to know us better and join us in our effort to advance plant science, conservation, and education. We hope you will sign up for our "GoBotanical!" newsletter, like us on Facebook, follow us on Twitter, and see what we're up to on our YouTube page.

Even better, become a Garden member and learn how you can be a part of the vital work we do year in, year out. If you've never visited our gardens on Kaua'i, Maui, and in Florida, we hope you will do so this year. We believe there's nothing more important than protecting the world's tropical plants and the ecosystems that support them. With your support, we'll have another amazing 50 years!





**1964** 1974 1984



1994 2004 **2014**





## NATIONAL TROPICAL BOTANICAL GARDEN

Celebrating 50 years of perpetuating the survival of plants, ecosystems, and cultural knowledge of tropical regions for the nation.

NTBG thanks its donors, visitors, and local community for enabling us to enrich life through *discovery*, scientific research, conversation and education programs. Your support has made this all possible.



**AUGUST 19, 1964**  
**Charter from U.S. Congress**  
Board of Trustee meet in Washington, DC

**1970**  
Groundbreaking in Lawai Valley



**1971**  
**Garden Dedication**  
Overlooking NTBG's first garden



**Kahanu Garden (Maui)**  
Aquired land in east Maui



**1976**  
**Limahuli Garden (Kaua'i)**  
Gift of land on Kaua'i's north shore

**1982**  
Headquarters in Kalaheo established



**The Kampong (Florida)**  
Historical property in Florida gifted

**1989**  
Saving Hawaiian flora emphasised



**1991**  
**Allerton Garden (Kaua'i)**  
NTBG assumes management of former private estate



**Limahuli Preserve (Kaua'i)**  
Nearly 1,000 acres donated



**2000**  
**McBryde Garden (Kaua'i)** First garden is rededicated as McBryde Garden



**2003**  
**Breadfruit Institute**  
Formed to study and preserve breadfruit diversity



**2008**  
**Botanical Research Center**  
Fourth building in headquarters complex LEED Gold



**2013**  
Lawai Kai Subzone created



**AUGUST 19, 2014**  
50th Anniversary  
Opening of Biodiversity Trail in McBryde Garden

1964

1974

1984

1994

2004

2014





HIGHLIGHTS OF 2014

---

# THE GARDENS

---





**T**he Kampong; the fifth garden of the NTBG network is located on the U.S. mainland, bordering Biscayne Bay in southeast Florida. Formerly the residence and private garden of noted plant explorer David Fairchild, the living collections at The Kampong reflect his personal interest for ornamental, edible, and ethnobotanical plants from Indo-Malaysia and the central and south Americas, with particular emphasis on fruit cultivars, flowering trees, and palms. This garden, with its diverse array of plants from the tropics and warm subtropics, is an exceptional setting for the study of tropical botany and horticulture. Facilities most recently added include a laboratory, education center, and dormitory. The Kampong's proximity to universities and horticultural institutions and agencies make it an ideal location to conduct high-leverage academic programs. The Kampong is listed on the National Register of Historic Places.



2014 HIGHLIGHTS:

- The Kampong hosted a number of new events in 2014. In April we co-hosted an evening of poetry and botanical foraging with the “O, Miami Poetry Festival”. In May we opened Patricia Van Dalen’s garden installation, *Natural Intersections*, supported by Miami Dade Cultural Affairs and FIU’s Frost Museum of Art. In December The Kampong hosted a series of concerts and shadow puppet shows, *Under the Kampong Moon*, celebrating the culture of Bali, a part of the world deeply loved by Dr. Fairchild.
- Educational and scientific events were expanded. We co-hosted with FIU the long-running Tropical Botany course with Professor Walter Judd. In January we held the annual botanical illustration course with Sarah Roche of Wellesley College. The Barnyard program continues to serve around 15 children from Coconut Grove providing afterschool tuition and inspiration in a garden environment. During 2014 we hosted meetings for Conservation International and the Mohamed Bin Zayed Species Conservation Fund.
- The new Horticultural Advisory Committee, chaired by Dr. Michael Rosenberg, met twice with the mandate to support improvements in the collections and landscapes of The Kampong. The large baobab tree was re-strapped and tree pruning completed for 45 trees. The invasive mangrove, *Bruguiera gymnorhiza*, was eradicated from the mangrove preserve. With Craig Morrell of Pinecrest Gardens and Harrell’s LLC, a program of plant feeding was initiated. Plant introduction was up for 2014 with 155 new introductions compared with only 23 in 2013. Currently The Kampong holds 1,355 taxa of plants representing 588 genera and 151 plant families.

- The Kampong management committee met three times to coordinate activities and prepare for the initiation of the International Center for Tropical Botany (ICTB.) The ICTB’s creation was approved by the State University system of Florida in November. Kampong Board of Governors members met and interviewed candidates for the ICTB director. Dr. Chris Baraloto was selected, a rainforest botanist currently working in French Guyana.
- A needs analysis was completed to identify priority repairs for the house. We raised over \$31,000 for repairs in the annual campaign and received grant support for repairs from Dept. of State Viva Florida. Priority repairs include roof repairs, guttering, windows, installing an elevator to the Tyson Terrace, and new ADA compliant washrooms. In July 2014 a leak damaged some books in the Kampong library; three books were sent for repair by Etherington Conservation services.
- During 2014, 60 volunteers supported our work by leading tours, assisting in the garden, and contributing to special projects.



FAIRCHILD MEDAL  
FOR PLANT EXPLORATION

The name David G. Fairchild (1869–1954) has been synonymous with plant exploration since the late 1800s. In 1999, the National Tropical Botanical Garden created this annual award to honor scientists who carry on this great tradition. Over the years NTBG has recognized, through this prestigious award, some of the world’s great modern botanists who, like Fairchild, have beaten, bushwacked, paddled, and ventured to the far reaches of the world to seek out and better understand the world’s plants. It was only fitting that NTBG would select its Florida garden, The Kampong, for the medal presentation. It is there, as Fairchild’s former home, that his heritage collections live on.

2014 Recipient: Quentin Luke

The 2014 David Fairchild Medal for Plant Exploration was awarded to Quentin Luke of the National Museums of Kenya in recognition of his pioneering field work in tropical Africa. Quentin has unrivaled knowledge of Africa’s botany and has explored some of that continent’s wildest and most remote areas.



# KAHANU GARDEN AND PRESERVE



**KAHANU GARDEN:** Located on the island of Maui, this garden is a place where the living collections converge with a living culture. The focus at this garden is Pacific Island ethnobotany – plants used by the people of Polynesia, Micronesia, and Melanesia. Here one learns the cultural relationships between these people and the plants that were transported around the Pacific in ancient voyaging canoes. Kahanu is home to Pi'ilanihale, a massive lava-rock structure that is believed to be the largest ancient place of worship (heiau) in Polynesia. This awe-inspiring cultural site is registered as a National Historic Landmark.

**KAHANU PRESERVE:** Bordering Kahanu Garden is this roughly 80-acre preserve, which contains some of the last high-quality coastal-Pandanus ecosystems in the state, as well as ancient cultural sites. Management of this area concentrates on the removal of invasive tree species, which have the ability to degrade this valuable plant community.





“...I have seen overgrown jungle become a source of food, and grassy strips of school lawn become opportunities for education.”

- IAN COLE

2014 HIGHLIGHTS:

- In 2014 Kahanu Garden had an average of 85 visitors per month, which is an increase of 10% over last year. We attribute this increase to our steady hours of operation and our presence on social media sites, such as Facebook (Kahanu Garden), TripAdvisor.com, and the newest travel review site Gogobot.com.
- Our Mahele Farm project at Kahanu Garden has bloomed and matured into a true community farm. We have weekly school groups working and learning alongside a dedicated volunteer group, and four full-time staff members. Through our participation, Kahanu Garden has been exposed to new composting ideas and overall plant health practices. By participating in the community sharing of equipment and sharing of labor for wood chipping projects, etc., Kahanu has had a continuous positive presence in the Hana community.
- The summer of 2014 was by far our most successful Kulia I Ka Pono Summer enrichment program. It was our 6th year of hosting 150 ninth and tenth grade students from Kamehameha Schools. Each year the program runs more smoothly, and features an improved curriculum. The students leave with knowledge in leadership traits and respect for proper stewardship of the land, plants, and overall Hawaiian culture that Hana has in such unlimited abundance. This program focuses on the agricultural practices of growing, harvesting, and identifying traditional ethnobotanical plants such as sweet potato, taro, and breadfruit.
- We are continuing to expand the size of our planting areas on the grounds of Kahanu Garden. We are defining the trails directing the visitors around the coconut collection, enlarging the size of our coastal garden, and improving the plantings in our canoe garden. All of this is part of our desire to enhance the visitors' experiences at Kahanu Garden.







# MCBRYDE AND ALLERTON GARDENS

**ALLERTON GARDEN:** A masterwork of landscape design created by Robert and John Gregg Allerton, Lawa'i Kai, as they called it, lies along the Lawa'i Valley coastline and serves as the majestic public entrance for the McBryde and Allerton gardens. Once a retreat of Hawai'i's Queen Emma, the property was acquired by the Allertons in the late 1930s. World travelers, the Allertons brought back unique tropical plants and European and Asian statuary and artifacts, and created a garden paradise. The harmony of Robert's artistic talents and John Gregg's architectural skills resulted in a living painting. Outdoor "rooms" were created with walls of plants surrounding gravity-fed pools and fountains. The meandering and peaceful Lawa'i Stream enters the Allerton Garden at its border with the McBryde Garden and flows through the garden toward the sea into a protected bay.

**MCBRYDE GARDEN:** NTBG's flagship garden, this 200-acre garden is situated in the picturesque Lawa'i Valley on the South shore of Kaua'i. The garden is named for the descendants of the family that once cultivated sugar cane in the valley. McBryde is a veritable "Noah's Ark" for tropical plants; the world's largest assemblage of native Hawaiian plants, including endangered and extinct-in-the-wild species, are sheltered in the upper end of the valley. Ethnobotanical plants (plants used by indigenous people) of Polynesian origin form the Canoe Garden. Living collections include significant groupings of rare palms, Rubiaceae, heliconias and gingers, Pacific Island endemics, and flowering trees. NTBG's state-of-the-art conservation and nursery facilities are located here, just down the valley from the herbarium, research library, and laboratories at the headquarters campus.

**LAWA'I PRESERVE:** Located on the lands above the waterfall in the McBryde Garden near the southern coast of Kaua'i is the nearly 50-acre Lawa'i Preserve. This area contains pasture lands and a riparian zone that was never developed by the plantations when they farmed sugar cane and pineapple in the Lawa'i Valley. As a result, it still contains ancient archaeological sites as well as a riparian plant community dominated by Polynesian-introduced plants. Management of this area is minimal and focuses on the use of cattle to keep it from being overrun with invasive species.

**THE SOUTHSORE VISITOR CENTER** is located near the Spouting Horn state park near Poipu. This beautiful ten-acre site is the gateway for visitors to the two Southshore gardens and it contains a series of teaser garden displays to tempt visitors into purchasing a tour into the Allerton and McBryde gardens. The Visitor Centre contains all visitor amenities for the Southshore Gardens such as: restrooms, gift shop, and ticket sales. It also includes an event meadow which is a popular area for weddings, private functions and public events such as the Christmas craft fair. All tours emanate from this important area.





2014 HIGHLIGHTS:

- **A new Manifesto.** The NTBG 50th Year was amazing for our two South shore Gardens. We initiated a process that will fundamentally change the organization for the future and introduced a business planning process that began to deliver significant results by year-end. The process began by bringing the entire staff together, from all gardens, for a full day devoted to creating an environment conducive to navigating transition. At the end of the day, the team collaborated on writing the following manifesto:
  - » NTBG is a dedicated ‘ohana, inspiring cultural connections to plants through botanical diversity, and at our best we improve our world by inspired stewardship, delivering education research and conservation, which are the tools for a resilient future.
  - » We’re unique because of the plant collections at our diverse locations that support our passionate educators in fulfilling our mission. Without us the world will lose educational opportunities, beautiful natural resources, precious plants, and passionate knowledgeable people.
  - » We bring with us a team of people who communicate our plant knowledge with creativity and lots of aloha. We have already made an impact by preserving plants, educating and inspiring in beautiful and amazing places, and we are driven by a passionate love for plants ‘ohana and ‘aina. To learn and share is our responsibility and pride.
  - » Our vision is to continue to be a sustainable leader in education, community, and culture, with a world class staff of conservation leaders. To maintain this we need to continue providing staff with education opportunities for growth in the areas of leadership, communication, fundraising and knowledge of plants and technical skills.
- **Business Plan.** A two-year business plan was initiated that focused on tactical investment designed to address barriers to engagement. Investment included:
  - » Fixing existing infrastructure – physical and operational
  - » Investing in new infrastructure
    - McBryde renewal project: Biodiversity Trail and Food for Thought Hub
    - Enlargement of the Visitor Center

“...This is where I share my knowledge about medicinal plants with Hawaiian schools and visitors, make imu (traditional Hawaiian earth oven) for Garden events, and enjoy work with all the staff like a team.”

- RICHARD KANAHELE

10,000	50,000	\$265,000
visitors experienced the Biodiversity trail in 2014	number of visitors	increased revenue

- **Major capital improvements:** New roads and road resurfacing were accomplished along with the completion of the Biodiversity Trail and Food For Thought hub. A 100-year-old compacted road was turned into an ADA-accessible trail beginning in an 80-foot mist tunnel representing beginning of time, 450 million-years-ago when very simple plants – mosses, algae, lichens – moved from water to land. The trail moves visitors forward in time to witness how plant diversity increases, plants develop vascular systems, the ability to reproduce with seed, the advent of woody plants, and then the explosion of flowering plants and an orchid display. The beauty of the orchid experience blends into the Food for Thought hub, which includes restrooms, a tram stop, snack shack, and views of an edible landscape.
- The Biodiversity Trail is the first piece of ADA-compliant infrastructure we have in the garden. Our access specialist, Christina Pilkington, said “the trail was the best example of accessible infrastructure she has ever seen.” More than 10,000 visitors experienced the Biodiversity Trail in 2014, and in 2015 this figure is set to double.
- Additionally, the island has been abuzz with people talking about NTBG. We became newsworthy, and by increasing tour capacity our numbers and yield have been strong.
- Visitor numbers were stable at around 50,000, but revenue increased by \$265,000. We gained confidence in our ability to deliver corporate events, incentive group events, weddings and other site rentals.
- 2014 has been a spectacular year and has set the foundation for 2015 to become an even more amazing year for NTBG!



# LIMAHULI GARDEN AND PRESERVE



**Limahuli Garden:** Surrounded by ancient peaks on the wetter North shore of Kaua'i is Limahuli Garden. This site was once a Hawaiian ahupua'a, an ancient land division system that incorporated natural resources from the mountains to the sea. The valley encompasses three distinct ecological zones and contains a wide range of habitats for growing native plants. In addition to indigenous plants, the collections include Polynesian and modern introduced plants, demonstrating the invasive nature of introduced species on native plant communities. Within the garden's boundaries are ancient agricultural terraces, created by the Polynesians nearly 1,000 years ago.

**Limahuli Preserve:** This nearly 1,000-acre preserve is located on the northern part of Kaua'i in the Limahuli Valley. This isolated area is surrounded on three sides by precipitous ridges 2,000 feet high with three separate ecological zones, numerous endangered species, and many ancient Hawaiian archaeological sites. NTBG has created two distinct management areas: the Upper Preserve, a remote hanging valley reaching 3,300 feet at its highest point that requires the use of helicopters for access, and the Lower Preserve, bordered by an 800-foot waterfall emanating from the Upper Preserve on the south and the interior edge of the public garden on the north. In 2009 NTBG completed the construction of a fence along five miles of the ridgeline that will exclude feral ungulates (pigs and goats) from this pristine area. Efforts in the Lower Preserve have been directed at restoring native forests from tree canopy down to ferns and other groundcovers.



2014 HIGHLIGHTS:

- We have made great strides in several key areas both in the Garden and in the Preserve, as well as our community-based initiatives. Limahuli continues to be a place that grows both plants and people. Our entire team has grown more professional, and we enjoy a cohesive and positive working environment.
- Our tour program had a stellar year due in large part to newly invested energy into the program. A new docent training series, part of our revamped docent education program, was completed along with a new marketing outreach initiative. As a result, our numbers for guided tours were the highest they've been since 2006. We've also completed a remodeling of the Visitor Center's interior, and with more local merchandise in our inventory, our sales have never been higher.
- Conservation work at Limahuli continues to be recognized as cutting edge. In Upper Limahuli Preserve we are having more success than before with both endangered plants and birds. We have rediscovered species previously thought to be extinct in our valley, and reintroduced others that were known to once thrive here. In Lower Limahuli Preserve we have initiated the construction of an ungulate fence to protect more than 60 acres of remnant forest and restored areas from feral pigs.

We also continued to out-plant several species of some of the most endangered plants in the world. Finally, a major research project in collaboration with ecologists from University of Hawai'i at Mānoa – funded by the National Science Foundation – has completed its first year. The goal of the project is to explore how communities are adapting their resource management under the context of global climate change. Preliminary results of this research will be reported in the next annual report.

- On the community front, we have resurrected the indigenous mapping initiative that was originally started in the late 1990s. One of the best products of the original initiative, a reef-name map of our coastline, was updated with additional place names (it now documents more than 60) and was founded on a more recent satellite photograph. This revived initiative also produced a new map depicting the traditional names for the peaks and ridges along the western ridgeline of Limahuli valley, which stands as the ancient border between our community and the next.
- With all the advances we made in 2014 we have both good momentum and direction heading into 2015.

“...I’m really grateful for the opportunity to help conserve plants for our future world. I love plants because they’re essential to life, and life is beautiful.”  
- KAVA VALE





# SCIENTIFIC RESEARCH + CONSERVATION = SCI/CON



## 2014 HIGHLIGHTS:

- **Art Exhibitions.** Two art exhibitions were held in the Botanical Research Center (BRC) as part of NTBG's 50th Anniversary celebration year, providing an opportunity for a new audience to be introduced to the BRC. "Voyage of Discovery," featuring 30 selected prints from NTBG's collection of the Banks Florilegium was presented first, followed by a collection of Marian Berger's paintings of extant Hawaiian birds and native plants. Together these exhibits brought in nearly 2,000 visitors and thousands of dollars in donations.
- **Seed banking.** NTBG's seed banking operations have been relocated into the BRC, a move undertaken to consolidate science and conservation activities under one roof. Bringing our related science and conservation work into the BRC increases opportunities for collaboration and promotion of NTBG's efforts to save Hawai'i's vanishing flora
- **Merwin Palm Collection.** Headed by Dr. David Lorence, NTBG staff concluded a project to identify, map, and permanently tag all the palms in the Merwin Conservancy's palm collection in Ha'ikū, Maui. A total of 2,741 palms were identified with assistance from world palm specialist John Dransfield (Royal Botanic Gardens, Kew), permanent anodized aluminum tags with names and identification numbers were attached, a database and high accuracy maps were produced, and management recommendations were made for the future of the collection.
- **Herbarium Digitization Project.** NTBG's herbarium (a collection of dried, pressed plant specimens) grew by 1,791 specimens last year and currently holds over 72,000 vouchers. This was the third and final year of a digitization grant from the National Science Foundation (NSF) to the Consortium of Pacific Herbaria (CPH) of which NTBG is a participant. This three-year collaborative grant with Bishop Museum, The University of Hawai'i at Manoa, and eight other Pacific herbaria provided essential resources enabling NTBG to process our unmounted specimen backlog. The databasing and barcoding of 43,500 specimens plus the photographing of 33,700 specimens was accomplished, making these data available worldwide on the NTBG and CPH websites.
- **IMLS slide Digitization.** A two-year project funded by the Institute of Museum and Library Services (IMLS) was completed in 2014. Approximately 12,000 unprocessed images including 7,200 photographic slides and 4,800 digital camera images were processed into NTBG's Digital Asset Management System, making the images available publicly on the collaborative Smithsonian Institution/NTBG Pacific Islands Biodiversity website as part of three projects for the floras Hawai'i, the Marquesas Islands, and Micronesia.





**2014 HIGHLIGHTS:** *(continued)*

- Taxonomy, Systematics, Floristics, and Fieldwork. Ken Wood has made several new county island records, rediscovered and mapped populations of several rare and presumed extinct species, including the rare *Lysimachia venosa*, recently rediscovered near Mt. Waiale'ale after over a century. Steve Perlman and Maui Plant Extinction Prevention (PEP) collaborators Hank Oppenheimer and Keahi Bustamente discovered a new *Hibiscadelphus* (meaning brother of Hibiscus) species on West Maui in 2012. Two healthy populations totaling nearly 100 plants of the new species, *Hibiscadelphus stellatus* (meaning star-like) were located. The discoverers published an article describing and validating the new species name in the online journal PhytoKeys in 2014.
- Marquesas Flora. The three final treatments requiring generic revisions have been completed and published in 2014 by Dave Lorence, Warren Wagner and John Clark. Revisions have brought to light eight Marquesas plant species new to science. Work is now focused on editing all text for inclusion in the website as well as the final print version of the flora, expected to be ready for publication in 2015.

“...[NTBG] has provided a sense of purpose and pride that comes with serving the place and community where I was born and grew up; helping to preserve a botanical heritage that is completely unique, breathtakingly beautiful, and, at the same time, disappearing...”

- NATALIA TANGALIN







# BREADFRUIT INSTITUTE

Since the early 1970s, NTBG has assembled the largest and most extensive breadfruit collection in the world through field expeditions to more than 50 Pacific Islands and collections from the Seychelles, Indonesia, and the Philippines. The collection is maintained at NTBG's Kahanu Garden on Maui and the three Kaua'i gardens, with more than 120 cultivars (varieties) represented, some of which are now extinct on their native islands.



We have a well-managed, world-class conservation collection of 120 breadfruit varieties, an active and dynamic research program, a productive outreach and education program, and, through myriad partnerships, are planting thousands of breadfruit trees throughout the tropics.

2014 HIGHLIGHTS:

• **Global Hunger Initiative**

More than 54,000 breadfruit trees have been delivered to 31 countries since the launch of our Global Hunger Initiative in 2009. Six countries received breadfruit trees for the first time in 2014: Bahamas, Barbados, Samoa, Republic of the Marshall Islands, Rwanda, and Zambia.

We wrapped up Year 2 of our “Plant a Tree of Life – Grow ‘Ulu project,” funded by the Ceres Trust, distributing 5,715 breadfruit trees – 16% more trees than in Year 1– of four varieties. More than 70 organizations helped us provide 3,500 trees to recipients throughout Hawaii to plant in their yards, communities, and farms. We also expanded the project internationally for the first time and distributed 2,215 trees to Liberia, Haiti, American Samoa, Samoa, and Zambia as part of this project.

• **Conservation & Horticulture**

An agroforestry buffer zone adjacent to the breadfruit collection at Kahanu Garden was created with funding from the USDA Natural Resources Conservation Service as part of a program for conservation practices that improve soil, water, plant, animal, air and related resources on agricultural land. Certified arborists pruned 26 breadfruit trees at McBryde Garden and Kahanu Garden to improve their overall health, make fruit harvesting easier, and reduce risk to staff and visitors.



“...Not only is NTBG conserving an important Pacific heritage plant, it is now positioned to help improve the lives of people throughout the tropics.”

- DIANE RAGONE

**Conservation & Research**

- Hundreds of breadfruit shoots of rare cultivars and ones selected for distribution through the Global Hunger Initiative were sent from the Kahanu Garden Breadfruit Collection to University of British Columbia Okanagan (UBCO) for micropropagation research.
- The salt-tolerant Toneno cultivar was successfully cultured for the first time in 2014 by Dr. Murch’s team at UBCO. Protocols for mass propagation and distribution by our horticultural partner Cultivaris/Global Breadfruit are now underway.
- The team created “Nutrition Facts” labels for generic breadfruit flour and specific labels for each of the cultivars that are commercially available from Global Breadfruit, essential for development and marketing of products made with breadfruit flour.
- Two breadfruit research orchards were planted, at EARTH University in Costa Rica and Kauai Community College, to answer agronomic questions such as effect of different fertilizers, organic products, cover crops, and interplanting for optimal tree growth, health, and yield. The orchards will be studied and cared for by staff, faculty, students, and volunteers at both institutions.

**Education and Outreach**

- More than 500 people attended a series of “Breadfruit: Tree to Table” workshops on four Hawaiian Islands with our Ho’oulu ka ‘Ulu project partners at the Hawaii Homegrown Food Network. On Hawaii Island, Oahu, Molokai, Palau and Guam, more than 300 people attended five different Breadfruit Institute (BFI) and partner-sponsored workshops that included valuable information on planting and tree care and interactive cooking demonstrations.
- The Breadfruit Institute was chosen by musician Jack Johnson’s Johnson Ohana Charitable Foundation as a partner in the All At Once campaign. BFI was one of 12 Hawaii non- profits invited to have a booth at Jack’s sold-out concert in Waikiki in August, and featured in the Non-profit Showcase on allatonce.org.
- The Breadfruit Production Guide: Recommended practices for growing, harvesting, and handling. The 2nd edition was published in February, and is available on Amazon.com, and as a downloadable PDF from project partner websites.





# LIVING COLLECTIONS

**T**he Living Collections are at the very core of NTBG's mission. Intentionally designed to serve research, conservation, and educational needs, they are the botanical equivalent of the masterpieces displayed in museums of art, and involving that same level of curation and care. Botanical records are a critical component, containing the intimate details of provenance, distribution, population status, horticultural requirements, and other data.





2014 HIGHLIGHTS:

- For the past year, we have been paying close attention the cycad collection in McBryde and Allerton Gardens. This is a large and important collection representing many endangered species. As a result of this special care, many cycads have produced new leaves and are reproductive. One particular cycad has produced a female cone for the first time since it was planted 21 years ago.
- Living Collections is partnering with Pacific Rim Conservation and the National Park Service in the restoration of Nihoku, an area at Kilauea Point that has had a predator proof-fence installed. NTBG is providing approximately 20,000 plants for the restoration and is offering plant consulting to the project as well.
- The feral pig exclusion fence project is ongoing and is a collaborative effort involving staff from all departments. The project was identified and deemed important in light of the damage feral pigs were causing to the gardens, including our important and rare native Hawaiian plant collections. The west side of the garden has been entirely fenced in from the main gate near the BRC down the valley to a cane haul road. The fence for the east side is being built in two parts and when completed will run from behind the BRC down to Four-House Canyon. The project, which is funded on a cost-share basis with the Natural Resources Conservation Service of USDA, has already reduced the number of pigs getting into the garden and damaging the living collections.

- Early in 2014, mapping McBryde's collections became possible again, after a 6-year hiatus, through a series of improvements in data management, collection, and processing. This was a collaborative, inter-departmental effort among Plant Records, IT, and GIS. The first step involved cleaning the existing data of errors and duplicates and developing new GIS tools to prevent future errors. Next, a Trimble GPS unit was permanently assigned to Plant Records, allowing mapping to take place concurrently with new plantings. Plant Records now independently uses Terrasync software and GPS Pathfinder Office to collect, import and post-process GPS points of the Living Collections for accuracy. After post-processing, points are exported to ArcGIS and appended to the master GIS dataset which is now linked to NTBG's Living Collections Database. Finally, there is an automated tool that takes all of the appended information from ArcGIS and inserts it nightly into NTBG's Living Collections Database. This allows queries for plants that have been mapped or not mapped. Since Plant Records now controls the entire mapping process, data-entry errors and mismatches are caught and fixed immediately. The development of these tools and processes has resulted in a 333.33% increase in the number of plants mapped annually. Roughly 1,300 plants were mapped in 2014 as compared to only 300 plants the previous year.

“...I cannot describe the feeling of joy it gives me to see those plants I babied as seeds or cuttings thriving in the middle of a well-maintained native forest.”

- ASHLY TRASK

20,000

plants for the restoration of Nihoku

333.33%

increase in the number of plants mapped annually

1,300

plants mapped in 2014





A group of people, including adults and children, are gathered in a lush tropical forest. They are standing on a rocky path near a calm pond that reflects the surrounding greenery. The scene is vibrant with various tropical plants, including some with bright red leaves. The word "EDUCATION" is overlaid in large, white, sans-serif capital letters on the left side of the image.

# EDUCATION

**E**ducation is an integral part of NTBG's mission and has the power to open the world of discovery, science, conservation, and horticulture to people of all ages and interests. It is through this process of learning that lifelong connections are forged between people and their environment.

NTBG seeks to engage the community and promote public understanding of tropical plants and their ecosystems, as well as traditional knowledge of cultural practices, by providing a broad spectrum of unique learning opportunities – from courses designed for professionals, curricula for college undergraduate and graduate students, programs for school-children of all ages, and workshops and lectures for the public.





Courses this year were a mixture of those generated by NTBG and those that were brought to the Garden. Outside programs delivered their curricula using the living collections and facility resources that NTBG offers. The latter are low impact and many generate revenue for NTBG via usage fees, such as fees for housing.

2014 HIGHLIGHTS:

- **Botanical Illustration Workshop, Kauaʻi.**  
Botanical illustrator, author, and instructor Wendy Hollender returned to Kauaʻi to once again conduct this very popular course. The offering was expanded in 2014 to include two back-to-back two-week sessions. Twenty-two students participated and they had the option of participating in both sessions or portions thereof.
- **Botanical Illustration Workshop, The Kampong.**  
This one-week session was taught at The Kampong by Sarah Roche, whose credentials include serving as the Education Co-Chair for the American Society of Botanical Artists.
- **Garden as Classroom (GAC), Kauaʻi.**  
More than 900 schoolchildren on the island of Kauaʻi came to the gardens in 2014 to study tropical plants. Exposing children at a young age to the importance of plants in their life generates a lifelong appreciation for the botanical world. Staff work hard to design the curriculum to closely match the content standards mandated by the Hawaiʻi Department of Education.
- **Science Teachers’ Enrichment Program.**  
STEP is a two-week program that enhances teachers’ knowledge of current information about tropical biology and equips them with innovative techniques using an inquiry-based approach, thus inspiring greater student interest in science education. The course, led by Kauaʻi Community College (KCC) Botany instructor Brian Yamamoto, is accredited by the University of Hawaiʻi and allows participating teachers to earn professional development credits. In 2014, there were seven participants including teachers from Kauaʻi, Oregon, and Canada.
- **Kōkua ʻĀina Youth Internship (KAYI), Kauaʻi.**  
During 2014 we had five interns who participated in our “green collar” career training program for youth.



**Horticultural Internship Program (HIP).**  
Seven young men and women joined NTBG’s Internship program from London, Ohio, New York, Florida, Nebraska, Missouri, and California. They brought a variety of skills and knowledge along with a passion for tropical plants. HIP is NTBG’s longest-running course and this 12-week internship involves working and learning in a variety of areas; spending one week working and learning at Limahuli Garden & Preserve; one at Kahanu Garden on Maui; and ten weeks at McBryde and Allerton Gardens. This year one of our interns applied for and was hired as a new gardener in the McBryde Garden, beginning a “green career” as this internship is designed to facilitate.

**Keiki Camp.**  
This very popular camp took place in the South Shore gardens in July of 2014. Fifty-five local youth and 23 volunteers participated in this one-week program. Campers spent a great deal of time exploring the gardens and participated in science, nature, and art activities. The Kauaʻi Economic Development Board granted \$1,750 in camper scholarships. Global Algae Innovations donated supplies plus \$16,359 in staff time to plan and facilitate camp activities and science stations. A grant from the Atherton Foundation provided \$6,500 for supplies and operation costs. We have received a great deal of positive feedback from the community and many keiki are looking forward to camp next year



# FINANCIALS

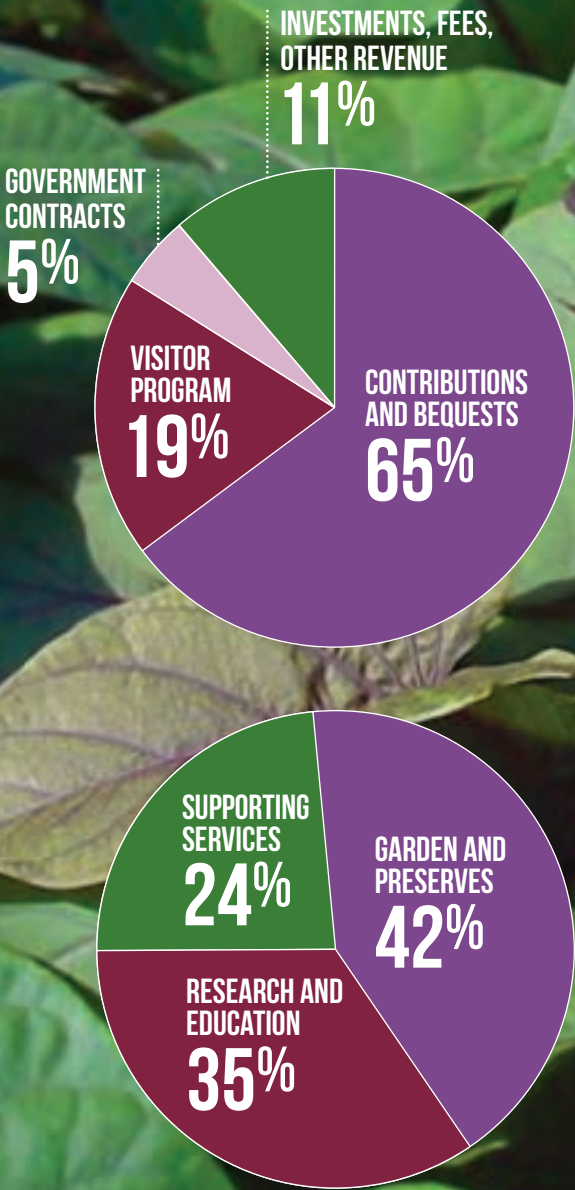
NATIONAL TROPICAL BOTANICAL GARDEN

BALANCE SHEETS (UNAUDITED)

DECEMBER 31, 2014 AND 2013

REVENUES  
AND  
SUPPORT

EXPENSES



	2014	2013
<b>Assets</b>	\$ in 1,000s	\$ in 1,000s
ASSETS		
Cash and cash equivalents	\$2,326	\$1,144
Other current Assets	4,228	4,006
Fixed Assets	35,998	35,730
Assets held for investment	27,635	27,833
TOTAL ASSETS	\$70,187	\$68,713

LIABILITIES AND NET ASSETS		
Liabilities:		
Current Liabilities	\$ 803	\$ 814
Long-term liabilities	2,829	2,259
Net assets:		
Unrestricted	28,016	29,085
Temporarily restricted	12,096	9,913
Permanently restricted	26,443	26,642
TOTAL LIABILITIES AND NET ASSETS	\$ 70,187	\$ 68,713

Statement of Activities (Unaudited)		
Year ended December 31, 2014 and 2013		
	2014	2013
<b>Assets</b>	\$ in 1,000s	\$ in 1,000s
REVENUES AND SUPPORT		
Contributions and bequests	\$ 7,731	\$ 4,983
Visitor Program	2,278	2,076
Government Contracts	573	699
Investments, fees, other revenue	1,347	2,823
TOTAL REVENUES AND SUPPORT	\$ 11,929	\$ 10,581

EXPENSES		
Gardens and preserves	\$ 4,671	\$ 4,026
Research and Education	3,847	4,018
Supporting Services	2,629	2,319
TOTAL EXPENSES	\$ 11,147	\$ 10,363
CHANGE IN NET ASSETS	\$ 782	\$ 218





# SUPPORTERS

OF THE NATIONAL TROPICAL BOTANICAL GARDEN





# BOARD OF TRUSTEES

## OF THE NATIONAL TROPICAL BOTANICAL GARDEN

AS OF DECEMBER 31, 2014

**CHAIRMAN**

MR. THOMAS D. HEWITT  
Calgary, Alberta, Canada

**SENIOR VICE CHAIRMAN**

MR. HUGH W. FOSTER  
San Francisco, California

**VICE CHAIRMAN**

MR. MERRILL L. MAGOWAN  
Hillsborough, California

HARLAN C. AMSTUTZ, M.D.  
Pacific Palisades, California

MRS. LESLIE M. CLARKE  
Amagansett, New York

MR. GORDON L. DEANE  
Cohasset, Massachusetts

MS. ANNE G. EARHART  
Corona del Mar, California

MS. JAN D. ELLIOTT  
Hāna, Hawai'i

MRS. ERIC P. FRAUNFELTER  
Castillon du Gard, France

MS. ADALINE H. FRELINGHUYSEN  
New York, New York

MR. PETER C. GARDNER  
Miami, Florida

MR. DONALD W.Y. GOO, FAIA  
Honolulu, Hawai'i

MRS. ROGER P. HANAHAN  
Charleston, South Carolina

MR. JOHN C. HOOPER  
San Francisco, California

MR. DOUGLAS MCBRYDE KINNEY  
Lake Forest, Illinois

MRS. BETSY K. MATTHEWS  
Palm Beach, Florida

MR. DAVID G. MEISSNER  
Grafton, Wisconsin

MR. JOHN H. R. PLEWS  
Honolulu, Hawai'i

PROF. SIR GHILLEAN PRANCE, FRS  
Lyme Regis, Dorset, United Kingdom

MR. DAVID W. PRATT  
Līhu'e, Hawai'i

Dr. DAVID RAE, OBE  
Edinburgh, United Kingdom

PROF. JOHN H. RASHFORD, PH.D.  
Charleston, South Carolina

MRS. WAYNE RICHARDSON, III  
Līhu'e, Hawai'i

MRS. CATHERINE S. RODRIGUEZ  
Venice, Florida

MRS. RAYMOND L. SALLEY  
Hōnaunau, Hawai'i

MS. PATRICIA W. SHEEHAN  
Hanalei, Hawai'i

MR. CYRUS B. SWEET, III  
New Castle, New Hampshire

MR. CHARLES R. WALKER  
Hillsborough, California

MRS. JUDY C. WEBB  
Greenbrae, California

MR. JOHN D. WEEDEN  
San Francisco, California

MR. CHARLES R. WICHMAN  
Honolulu, Hawai'i

MRS. REED C. WILSON  
Portland, Oregon

**TRUSTEES EMERITUS**

MRS. LEBURTA G. ATHERTON  
Honolulu, Hawai'i

MRS. ELEANOR BLEAKIE  
Cohasset, Massachusetts

MR. SAMUEL A. COOKE  
Honolulu, Hawai'i

MRS. MARTHA W. COX  
Hobe Sound, Florida

MR. GLENN A. GOLDSMITH  
Lāwa'i, Hawai'i

MR. PATRICK HENRY  
Palm Beach, Florida

MRS. SARAH O. HEWITT  
Calgary, Alberta, Canada

MR. THOMAS S. KENAN, III  
Chapel Hill, North Carolina

MRS. L.W. LANE, JR.  
Menlo Park, California

MR. JIM NABORS  
Honolulu, Hawai'i

# COUNCIL

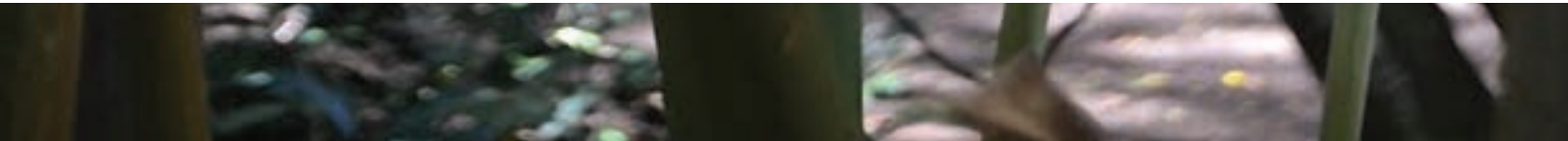
## OF

# FELLOWS



The NTBG Council of Fellows was established in 1985 to involve the friends of the Garden in its development as a national resource. Fellows are invited to participate in the bi-annual Board of Trustees meetings, one held in Hawai'i in the spring and the other in the fall on the U.S. mainland. Also, Fellows have the opportunity to participate in specially arranged international travel programs that include visits to private and public gardens.

Annual Fellows dues begin at the \$1,500 level and continue up to the Chairman's Circle level with all revenue dedicated to Garden operations. Many Fellows become involved with the Garden's special programs and projects. The Council of Fellows has been instrumental in helping NTBG become one of the most important tropical botanical gardens in the world. The following list reflects all those who were active members of the Council of Fellows as of December 31, 2014. While every effort has been made to ensure the accuracy of information and spelling, please notify our Development Office at 808-332-7324 of any errors.





CHAIRMAN'S CIRCLE FELLOWS  
(\$20,000)

MARY AND JAMES W. GRIFFITH, JR.  
Carbondale, Colorado

HEATHER AND PATRICK HENRY  
Palm Beach, Florida

CAREY AND ANTHONY SUTTON  
Gainesville, Florida

BENEFACTOR FELLOWS  
(\$10,000-\$19,999)

LAURA RAY AND DONALD W. Y. GOO  
Honolulu, Hawai'i

KATHERINE AND SCOTT GRAINGER  
Kamuela, Hawai'i

DIANE B. HELLER  
Chicago, Illinois

MARY HULITAR  
Palm Beach, Florida

MARION S. AND DAVID G. MEISSNER  
Grafton, Wisconsin

LOUISE M. AND RICHARD A. STEENBLIK  
Kīlauea, Hawai'i

BARBARA K. AND CYRUS B. SWEET  
New Castle, New Hampshire

JANE WOODWARD  
Palo Alto, California

PATRON FELLOW  
(\$5,000 - \$9,999)

PATRICIA P. AND HARLAN C. AMSTUTZ  
Pacific Palisades, California

CONSTANCE L. AND THOMAS BROZ  
Freedom, California

MARY MACKIERNAN AND  
ROBIN D. CLARK  
Kalāheo, Hawai'i

MOTOKO T. AND GORDON L. DEANE  
Cohasset, Massachusetts

NANCY AND DAVID DOYLE  
Del Mar, California

JOAN G. EVANS  
Santa Barbara, California

GAIL W. AND PETER S. GOLTRA  
Middleburg, Virginia

ELIZABETH H. AND DOUGLAS  
MCBRYDE KINNEY  
Lake Forest, Illinois

LIN LOUGHEED  
Miami Beach, Florida

SUSAN E. LYNCH  
Greenwich, Connecticut

ROBERT MALOTT  
Chicago, Illinois

JOHN H. R. PLEWS  
Honolulu, Hawai'i

CATHERINE S. RODRIGUEZ  
Venice, Florida

ELIZABETH B. ROSS  
Portola Valley, California

CHRISTOPHER A. SHUPING  
Chapel Hill, North Carolina

PHYLLIS E. SWINDELLS  
Bend, Oregon

CATHERINE AND MICHAEL TOPHAM  
Kalāheo, Hawai'i

SPONSORING FELLOW  
(\$3,000 - \$4,999)

PAMELA W. COLE  
Coral Gables, Florida

SAM AND MARY COOKE  
Honolulu, Hawai'i

JAN D. ELLIOTT  
Hāna, Hawai'i

DAN FLANAGAN AND  
GEOFFREY G. KERR  
Palo Alto, California

CESELI AND HUGH FOSTER  
San Francisco, California

SARAH PURCELL AND DAVID GOODALE  
Hānalei, Hawai'i

AMY DANA HEWITT  
Lake Louise, Alberta Canada

CYNTHIA AND TERRANCE P. MCMAHON  
Monte Sereno, California

HELEN AND WALTER NORTON  
Harpswell, Maine

SUSAN C. ORB  
Glen Ellen, California

HAROLD G. OSBORN  
Avery Island, Louisiana

KATHERINE G. AND WAYNE  
RICHARDSON  
Līhue, Hawai'i

KEN RINGLE  
Washington, District of Columbia

JEAN AND TIMOTHY SCHMIT  
Calabasas, California

ANNIE SEIPP  
Portola Valley, California

CATHERINE AND MICHAEL SHEA  
Arlington, Virginia

LAURINDA SPEAR AND  
BERNARDO FORT BRESCIA  
Miami, Florida

MARGOT AND GEORGE THOMPSON  
Portland, Oregon Fellows of

HAU'OLI AND CHIPPER WICHMAN  
Kalāheo, Hawai'i

JEANNE R. AND CHARLES R. WICHMAN  
Honolulu, Hawai'i

FELLOWS  
(\$1,500-\$2,999)

ANONYMOUS (4)

PETER AND ANNE ANDERSON  
Palo Alto, California

TANYA ANSALDI AND  
FRANCESCO SACCHI  
Palm Beach Gardens, Florida

STEPHANIE LERNER ANSIN AND  
SPENCER STEWART  
Coral Gables, Florida

LINDA BACON  
San Francisco, California

GEORGETTE F. BALLANCE AND  
ROSS HAVERFIELD  
Miami, Florida

SANDY BATCHELOR  
Miami Beach, Florida

JULIA AND WILLIAM BECKHAM  
Coral Gables, Florida

E. COURTNEY BERRY  
Coconut Grove, Florida

KATHARINE AND FRANK BIXBY  
Chicago, Illinois

TERRY BLECHMAN  
Miami Beach, Florida

PATRICIA AND RICHARD BOHN  
Coral Gables, Florida

BEATRICE BOWLES  
San Francisco, California

JESSICA BRABO AND ANGUS TOPFER  
Miami, Florida

DIANE M. AND DAVID BUCK  
Milwaukee, Wisconsin

ADA AND OTTO BUSOT  
Coral Gables, Florida

JILL AND DONALD CANAPARO  
Hānalei, Hawai'i

ANDRE CAROTHERS  
Berkeley, California

AMINA AND ENRIQUE CASERO  
Coconut Grove, Florida

MARIA AND ALEX CASTRO  
Miami, Florida

MARISSA CIORCIARI AND PIETRO  
TABALLIONE  
Miami, Florida

HAZEL AND GORDON COATES  
Calgary, Alberta Canada

MEGAN AND TRAVIS COLE  
South Miami, Florida

NANCY AND EDWARD CONNER  
San Francisco, California

MARY MCDERMOTT COOK  
Dallas, Texas

LUCY B. AND STEVE COOKSON  
Denver, Colorado

MARY AND MICHAEL COPRIVIZA  
Cupertino, California

MICHAEL COSTELLO  
Miami, Florida

CAMILA COTE  
Miami, Florida

MARGIT AND LLOYD E. COTSEN  
Los Angeles, California

MARY AND MICHAEL CUDAHY  
Carmel, California

MARTHA R. DAVIS AND ALIX RITCHIE  
Ft Lauderdale, Florida

KRISTEN DEANE AND DOUGLAS  
CAMPBELL  
Cohasset, Massachusetts

LINDSAY AND ZACH DEANE-MAYER  
Boston, Massachusetts

DEBRA DEMARCO  
South Miami, Florida

DIANNE AND DAVID DROUGHT  
Kalāheo, Hawai'i

LOUISA C. DUEMLING  
Worton, Missouri

CRISTINA AND DANIEL ECHAVARRIA  
Coconut Grove, Florida

VICTOR ECHEVERRIA  
Miami, Florida

CLAIRE EFIRD  
Wilmington, North Carolina

DAVIELA AND MARK ELMAN  
Miami, Florida

CHRIS ERICKSON  
Houston, Texas

JANE AND GEORGE FOGG, III  
Chestnut Hill, Massachusetts

MARISA FORT  
Miami, Florida

ELIZABETH H. FOSTER  
Orinda, California

T. JACK FOSTER, JR.  
San Mateo, California

HEDDA AND LUTZ FRANZ  
Sai Kung N.T., Hong Kong

HARRIET S. AND ERIC P. FRAUNFELTER  
Castillon du Gard France

TINA FREEMAN AND PHILIP WOOLLAM  
New Orleans, Louisiana

VERA AND MELVIN GABEL  
Palm Desert, California

TAYLOR AND GUSTAVO GALLARDO  
Kōloa, Hawai'i

RENEE AND STEPHEN GANS  
Miami Beach, Florida

GLORIA GETTY  
San Francisco, California

HARLEY GOLDBERG  
Santa Cruz, California

GLENN AND JANE GOLDSMITH  
Lāwai, Hawai'i

CINDY AND JEFFREY GOMEZ  
Miami, Florida

MANUEL GONZALEZ AND JOSE IRAOLA  
Miami, Florida

DOROTHEA AND STEVEN GREEN  
Miami, Florida

JAMES GUERBER  
Kōloa, Hawai'i

ROBERTA HAAS  
Hānalei, Hawai'i

PATRICIA S. AND WILLIAM J. HAGENAH  
Kenilworth, Illinois

CLIFFORD HAGUE  
Avalon, California

BERYL AND REX HAMILTON  
Coral Gables, Florida

DODO AND SAMUEL M. HAMILTON  
Wayne, Pennsylvania

CHARLES HANEMANN  
Miami, Florida

LYNN HANKE  
New York, New York

ELIZABETH AND SCOTT M. HASKINS  
San Francisco, California

SARA H. HEWITT  
Dallas, Texas

THOMAS BROWNING HEWITT, III  
Denver, Colorado

CARRIE AND STEVEN HODESVEN  
Kailua, Hawai'i

PHILIP HODGE  
Minneapolis, Minnesota

KATHLEEN AND HERBERT HONG, JR.  
Honolulu, Hawai'i

KELLY AND FREDERICK HOPKINS  
Charlotte, North Carolina

SUSANA E. AND BRADLEY D. HOUSER  
Miami, Florida

KRISTIN K. AND THOMAS J. HUGHES  
Wellesley, Massachusetts

PAMELA K. AND ROGER HULL  
Lake Forest, Illinois

LISA M. IMHOFF  
Baltimore, Maryland



ZOE U. JOHNSON  
Miami, Florida

SHEILA AND ROBERT JOYNT  
Batavia, Illinois

MRS. WILLIAM A. KAYNOR  
Miami, Florida

SUSANNE S. KAYYALI  
Coral Gables, Florida

FRANK H. KENAN, II  
Charleston, South Carolina

THOMAS S. KENAN, III  
Chapel Hill, North Carolina

ROBERT R. KENDALL AND  
ANTHONY HOLMES  
Dallas, Texas

MINERVA KING  
Punta Gorda, Florida

THOMAS D. KING, JR.  
Kīlauea, Hawai‘i

KIMBERLEY AND DOUGLAS MCBRYDE  
KINNEY, JR.  
Lake Forest, Illinois

BRIGITTE AND JAMES KISHLAR  
Miami, Florida

ELIZA AND MICHAEL KOEPPPEL  
Larkspur, California

CHERYL AND CHARLES KOZLOFF  
Hobe Sound, Florida

KAROLYN J KRAMER AND FRANK COHEN  
Atlanta, Georgia

SHEILA AND FRANK KUHL  
Miami, Florida

SUZANNE D. KUSER  
Washington, District of Columbia

LUCY AND ARNO KUTNER  
Miami, Florida

LYNDA L. LAROCCA  
Coral Gables, Florida

MONICA AND FLAVIO LEO  
Coral Gables, Florida

DONALD R. LOGAN  
Santa Barbara, California

SALLY AND DONALD LUCAS  
Los Gatos, California

CYNTHIA AND MERRILL L. MAGOWAN  
Hillsborough, California

TED MANNELLI  
Tallahassee, Florida

YANA AND ARTURO MANOTAS  
Miami, Florida

LINDSAY FRADY AND JEFFREY MARTIN  
Sunrise, Florida

ELIZABETH E. MATTHEWS  
West Palm Beach, Florida

GEORGE G. MATTHEWS  
West Palm Beach, Florida

JEAN R. AND WILLIAM MATTHEWS  
Palm Beach, Florida

JOYCE AND EDWARD MCDOWELL  
Kīlauea, Hawai‘i

KATHY MCGOLDRICK  
Lakewood, Washington

MARY L. AND S. MICHAEL MCLAUGHLIN  
Winnetka, Illinois

LYNNE AND PETER J. F. MEAGHER  
Coral Gables, Florida

MARIA AND ANDRES MEJIA  
Coral Gables, Florida

AMY AND JACK MEYERS  
North Haven, Connecticut

RUTH H. MITCHELL  
Key Biscayne, Florida

JULIET MONCRIEF  
Volcano, Hawai‘i

MARIANNE C. MONTORO  
Coral Gables, Florida

AMY LIPSON AND JOSE MORALES  
Miami, Florida

MARY MACMILLAN MORSE  
Palm Beach, Florida

CELESTE AND WILLIAM T. MUIR  
Coconut Grove, Florida

CAROLINE AND CHARLES NEAL  
Wilmington, North Carolina

CATHERINE AND NGUYEN V. NGUYEN  
Miami, Florida

HELEN J. NICASTRI AND BRIAN BURRY  
Coral Gables, Florida

ASHLEY NOBBE AND ZACH WINKLER  
Miami Beach, Florida

PAULINE AND WILLIAM NUTTING  
Hobe Sound, Florida

HÉLÈNE M. M. PANCOAST  
Miami, Florida

GAIL PASTER  
Chevy Chase, Maryland

JILL PENMAN AND MATTHEW KUJAWA  
Miami, Florida

ELIZABETH AND BRUCE POTTER  
Ross, California

THOMAS E. POWELL, III  
Burlington, North Carolina

CAROL J. PRATT  
Līhue, Hawai‘i

DIANA AND FREDERICK H. PRINCE  
Washington, District of Columbia

JANICE AND T. HUNTER PRYOR, M.D.  
Coral Gables, Florida

LINDSEY RANSOM  
Miami, Florida

LISA REMENY  
Miami, Florida

ANDREA L. RICE  
Coral Gables, Florida

CARLOS RICE  
Miami, Florida

MARTA M. ROBINSON  
San Francisco, California

DIANE AND MICHAEL ROSENBERG  
Miami, Florida

ROBERTA L. AND ROGER L.  
ROSENBERGER  
Miami, Florida

SUSAN AND JOHN ROTHCHILD  
Miami Beach, Florida

MARY AND FEDERICO J. SÁNCHEZ  
Key Biscayne, Florida

FREDERICA AND ROBERT SANDOE  
Fort Myers, Florida

KATHERINE AND JOHN SCARBOROUGH  
Titusville, Florida

JOHN P. SCHAMBER AND WAYNE S.  
YOSHIGAI  
Kailua, Hawai‘i

JESSIE SCHILLING  
Woodside, California

KAREN AND PAUL SCHLATHER  
Medina, Ohio

PATRICIA O. SCHLEUNING  
Portland, Oregon

HILLARY AND CONSTANTINE SCURTIS  
Coconut Grove, Florida

CYNTHIA SEAMAN AND DAVE RAGNOW  
Coconut Grove, Florida

JOAN AND LYNN SEPPALA  
Livermore, California

SUSANNAH AND JOHN K. SHUBIN  
Coral Gables, Florida

VIRGINIA LATHAM AND  
FRANCES SIMONS  
Kōloa, Hawai‘i

HANNAH AND PETER SIROIS  
Kōloa, Hawai‘i

CAROLINE B. AND BAILEY B. SORY  
Palm Beach, Florida

PENELOPE AND E. ROE STAMPS  
Coconut Grove, Florida

EDWARD SWEENEY, JR.  
Parker, Colorado

JOCELYN D. TENNILLE  
Miami, Florida

VANN AND PARKER THOMSON  
Coral Gables, Florida

ROBIN AND DOUGLAS TISDAHL  
N. Miami, Florida

BETSY TOULON  
Kōloa, Hawai‘i

HELEN TUERO AND JORDAN CHACON  
Miami, Florida

CHRISTIANE AND CHRISTOPHER TYSON  
Coral Gables, Florida

MR. AND MRS. THOMAS N. URBAN, JR.  
Des Moines, Iowa

LENITA C. AND HENK VAN DER WERFF  
Taos, New Mexico

CHRYSTAL VANG  
Seattle, Washington

VIRGINIA B. VANOCUR  
Santa Barbara, California

JACLYN AND JORGE VASQUEZ  
Miami, Florida

SUSIE AND WALID WAHAB  
Miami, Florida

HEATHER AND RICHARD WATERS  
Carlottesville, Virginia

INDRU AND GULAB WATUMULL  
Honolulu, Hawai‘i

PAUL WEAVER  
San Francisco, California

MARY E. WEINMANN  
Washington, District of Columbia

TERESA AND LEE WEINTRAUB  
Miami, Florida

CLARE R. WHEELER AND ROANE T. SIAS  
Larkspur, California

BERNADETTE AND JONATHAN WICHMAN  
Hānaiei, Hawai‘i

WENDY J. WICHMAN  
Honolulu, Hawai‘i

MICHELE AND MALCOLM WISEHEART, JR.  
Coral Gables, Florida

TINA FREEMAN AND PHILIP WOOLLAM  
New Orleans, Louisiana

ELIZABETH SUAREZ AND JAMES  
WYNKOOP  
Miami, Florida

GEORGENE AND EDWIN YAMADA  
Lāwai, Hawai‘i

LIFETIME

MRS. EUGENE MCDERMOTT  
Dallas, Texas

HONORARY

MRS. ALISON ANDREWS  
Seattle, Washington

ELIZABETH C. BAKER  
New York, New York

MR. NICHOLAS B. BRAGG  
Winston Salem, North Carolina

HON. ANNE COX CHAMBERS  
Atlanta, Georgia

COUNT AND COUNTESS BERNARD DE LA  
ROCHEFOUCAULD  
Fay Aux Loges, France

JANE AND MICHAEL FISCHER  
Mill Valley, California

MRS. JEFF HOLCOMBE  
Fort Wayne, Indiana

MADAME ANDRE MADRE  
Paris, France

MRS. PETER MCCOY  
Beverly Hills, California

MR. WILLIAM S. MERWIN  
Ha‘ikū, Hawai‘i

MRS. JOHN W. PYNE  
Far Hills, New Jersey

MRS. BAGLEY WRIGHT  
Seattle, Washington

LARRY AND COLLEEN SCHOKMAN  
Coconut Grove, Florida

CORPORATE PARTNERS  
PROGRAM

CORPORATE LEADER  
(\$10,000 +)

Koloa Rum Company

CORPORATE MEMBERS  
(\$2,000 - \$4,999)

East West Partners  
Kawailoa Development, LLC



# 2014 DONORS

## OF THE NATIONAL TROPICAL BOTANICAL GARDEN

**Thank you!** The National Tropical Botanical Garden is grateful to all who generously support our programs. The following list reflects the 2014 cumulative giving by donors and includes all gifts received between January 1, 2014, and December 31, 2014, including memberships, annual fund gifts, campaign gifts, pledge payments, grant awards, gifts for special projects, and tribute and memorial gifts. While every effort has been made to ensure the accuracy of information and spelling, please notify our Development Office at 808-332-7324 of any errors.

**\$1,000,000 and above**

Barbara K. and Cyrus B. Sweet

**\$250,000 - \$500,000**

Thomas S. Kenan, III  
Susan E. Lynch

**\$100,000 - \$249,999**

Anonymous  
Motoko T. and Gordon L. Deane  
Mary and James W. Griffith, Jr.  
Mr. Rupert H. Johnson, Jr.  
Elizabeth H. and Douglas  
McBryde Kinney  
Cynthia and Merrill L. Magowan  
Estate of Edwin A. Seipp, Jr.  
Judy C. Webb  
John D. Weeden

**\$50,000 - \$99,999**

Thomas D. Hewitt  
Jessie Schilling

**\$25,000 - \$49,999**

Leslie M. and David H. Clarke  
Sam and Mary Cooke  
Ceseli and Hugh Foster  
Adaline H. Frelinghuysen  
Gail W. and Peter S. Goltra  
Ruth F. and Benjamin C. Hammett  
Heather and Patrick Henry  
John H. R. Plews  
Carol and David Pratt  
Catherine S. Rodriguez  
Jeanne R. and Charles R. Wichman

**\$10,000 - \$24,999**

Patricia P. and Harlan C. Amstutz  
Georgette F. Ballance and  
Ross Haverfield  
Mary Mackiernan and Robin D. Clark  
Eve and Martin Cole  
Martha W. Cox  
Dana L. and Stanley R. Day  
Barney A. Ebsworth  
Jan D. Elliott  
Simon Gerson  
Laura Ray and Donald W. Y. Goo  
Katherine and Scott Grainger  
Growney Family Fund  
Mary E. Hanahan  
Diane B. Heller  
Mr. John C. Hooper  
Mary Hulitar  
Koloa Rum Company  
Laila Twigg-Smith Art Fund  
Lin Loughheed  
Sally and Donald Lucas  
Betsy K. Matthews  
Marion S. and David G. Meissner  
Katherine G. and Wayne Richardson  
Diane and Michael Rosenberg

Louise M. and Richard A. Steenblik  
Carey and Anthony Sutton  
Mr. and Mrs. Thomas N. Urban, Jr.  
Deborah Sanderson and  
Charles R. Walker  
Jane Woodward

**\$5,000 - \$9,999**

Jon J. Alexiou  
Bilzin Sumberg Baena Price & Axelrod LLP  
Constance L. and Thomas Broz  
Cotsen Corporation  
Nancy and David Doyle  
Joan G. Evans  
Harriet S. and Eric P. Fraunfelter  
Dorothea and Steven Green  
Hawaiian Mahogany  
Kawailoa Development, LLC  
Julius Lewis  
Robert Malott  
George G. Matthews  
Moss & Associates, LLC  
Susan C. Orb  
Cynthia and Raymond L. Salley  
Annie Seipp  
Patricia W. Sheehan  
Phyllis E. Swindells  
Catherine and Michael Topham  
Betsy Toulon  
Mary E. Weinmann  
Christina B. and Reed C. Wilson

**\$1,000 - \$4,999**

Anonymous (5)  
AD International, LLC  
Peter and Anne Anderson  
Janice and William Anderson  
Stephanie Lerner Ansin and  
Spencer Stewart  
Linda Bacon  
Elizabeth C. Baker  
Anne and Walter W. Barnes  
Julia and William Beckham  
E. Courtney Berry  
Katharine and Frank Bixby  
Terry Blechman  
Patricia and Richard Bohn  
Jessica Brabo and Angus Topfer  
Diane M. and David Buck  
Ada and Otto Busot  
Catherine and Michael Campbell  
Jill and Donald Canaparo  
Suzanne and Stanley Caplan  
Carol and Daniel H. Case  
Maria and Alex Castro  
Janna and Bruce Chandler  
Laura E. Chandler  
Marissa Ciorciari and Pietro Taballione  
Hazel and Gordon Coates  
Susan and Charles Cobb  
Pamela W. Cole  
Megan and Travis Cole  
Nancy and Edward Conner  
Mary McDermott Cook

Lucy B. and Steve Cookson  
Mary and Michael Copriviza  
Mary and Michael Cudahy  
Martha R. Davis and Alix Ritchie  
Debra DeMarco  
Carol D. and Martin Dickinson  
Mr. and Mrs. Eugene W. Drody, III  
Dianne and David Drought  
Ms. Anne G. Earhart  
Earthworks Pacific, Inc.  
East West Partners  
Cristina and Daniel Echavarria  
Jennifer and Kevin Eide  
Daviela and Mark Elman  
Chris Erickson  
Martha and Paddy Farrell  
Jane and George Fogg, III  
Elizabeth H. Foster  
T. Jack Foster, Jr.  
Hedda and Lutz Franz  
Elizabeth Frautschi  
Tina Freeman and Philip Woollam  
Vera and Melvin Gabel  
Harley Goldberg  
Richard Goldsmith  
Cindy and Jeffrey Gomez  
Sarah Purcell and David Goodale  
Karen and Richard M. Goodale  
Myriam and Marc Grad  
James Guerber  
Gordon and Roberta Haas  
Patricia S. and William J. Hagenah  
Hager Companies  
Clifford Hague  
Beryl and Rex Hamilton  
Charles Hanemann  
Elizabeth and Scott M. Haskins  
Hawai'i Pacific Health  
Amy Dana Hewitt  
Kathleen and Herbert Hong, Jr.  
Kristin K. and Thomas J. Hughes  
Pamela K. and Roger Hull  
Hunt Companies  
Sheila and Robert Joynt  
Ka'iwa Construction Inc.  
Kauai Coffee Company, LLC  
Kauai Economic Development Board Inc.  
Kauai Nursery & Landscaping, Inc.  
Mrs. William A. Kaynor  
Susanne S. Kayyali  
Robert R. Kendall and Anthony Holmes  
Donna Kidwell  
Minerva King  
Thomas D. King, Jr.  
King Auto Center  
Kimberley and Douglas McBryde, Jr.  
Brigitte and James Kishlar  
Eliza and Michael Koeppel  
Cheryl and Charles Kozloff  
Karolyn J Kramer and Frank Cohen  
Kristofferson Revocable Trust  
Kuhio Auto Group  
Sheila and Frank Kuhl  
Suzanne D. Kuser  
Mary Lou LaBarbera



Pamela and R. Kirk Landon  
Mrs. L. W. Lane, Jr.  
Lynda L. LaRocca  
Lasso The Moon, Inc.  
Monica and Flavio Leao  
Josephine and Thomas Linden  
Donald R. Logan  
Makai Properties LLC  
Yana and Arturo Manotas  
Lindsay Frady and Jeffrey Martin  
Jean R. and William Matthews  
Joyce and Edward R. McDowell  
Kathy McGoldrick  
Mary L. and S. Michael McLaughlin  
Cynthia and Terrance P. McMahon  
Ruth C. Mead  
Maria and Andres Mejia  
Amy and Jack Meyers  
Ladeen Miller  
Ruth H. Mitchell  
Juliet Moncrief  
Marianne C. Montoro  
Gregory E. Moore and Wynne W. Szeto  
Emma D. Morales  
Celeste and William T. Muir  
Caroline and Charles Neal  
Catherine and Nguyen V. Nguyen  
Helen J. Nicastri and Brian Burry  
Ashley Nobbe and Zach Winkler  
Melissa and Neal Norman  
Helen and Walter Norton  
Pauline and William Nutting  
Outfitters Kauai, Ltd.  
Hélène M. M. Pancoast  
Gail Paster  
Seog Soon Pearson and  
Stephen D. Pearson  
Jill Penman and Matthew Kujawa  
Pioneer Hi-Bred International, Inc.  
Elizabeth and Bruce Potter  
Thomas E. Powell, III  
Ilona and James Priest  
Diana and Frederick H. Prince  
Janice and T. Hunter Pryor, M.D.  
Carol A. Ransom  
Professor John H. Rashford, Ph.D.  
Realty Associates Advisors LLC  
Andrea L. Rice  
Carlos Rice  
Roberta L. and Roger L. Rosenberger  
Elizabeth B. Ross  
Susan and John Rothchild  
Matthew Ruel  
Mary and Federico J. Sánchez  
Katherine and John Scarborough  
John P. Schamber and Wayne S. Yoshigai  
Karen and Paul Schlather  
Patricia O. Schleuning  
Jean and Timothy Schmit  
Hillary and Constantine Scurtis  
Joan and Lynn Seppala  
Catherine and Michael Shea  
Shioi Construction Inc.  
Shubin & Bass. P.A.  
Caroline B. and Bailey B. Sory

Penelope and E. Roe Stamps  
Marilyn and Tom Sumner  
Edward Sweeney, Jr.  
Sylvia and Jack F. Sweeney  
Syngenta Hawaii, LLC.  
The Garden Club of Honolulu  
Margot and George Thompson  
Vann and Parker Thomson  
Robin and Douglas A. Tisdahl  
Helen Tuero and Jordan Chacon  
Christiane and Christopher Tyson  
UBS International, Inc.  
Linda and Joe Upton  
Lenita C. and Henk van der Werff  
Chrystal Vang  
Virginia B. Vanocur  
Jaclyn and Jorge Vasquez  
Pauline and Melvin Ventura  
Joan and Glenn Vinson  
Susie and Walid Wahab  
Heather and Richard Waters  
Teresa and Lee Weintraub  
Clare R. Wheeler and Roane T. Sias  
Johnalynn and Charles (Chipper)  
Wichman, Jr.  
Michele and Malcolm Wiseheart, Jr.  
Ann Banning and Hank Wright  
Elizabeth Suarez and James Wynkoop  
Georgene E. and Edwin Y. Yamada

\$500 - \$999

Anonymous (2)  
Judi Beck and Tom Alberg  
Anna and David Anawalt  
Ann S. and Eugene C. Anderson  
Betsy S. Atkins  
Merritt and John Atwood  
Sarah Bakewell  
Maria Beguiristain  
Ricki J. Bell  
Gerry Weinmaster and James Boulter  
Arnold Brender  
Kate and Bert Bunnell  
Teresa Buoniconti  
Cynthia S. Burke  
Biana Demarco and Cliff Comfort  
Camila Cote  
Norma J. Craig  
Evelyn de Buhr and Frank D. Rothschild  
Diane Dickhut  
Greg Eaton and Michael Flagg  
Donna and Art Engelbrecht  
Valerie and Robert English  
Lynn and Kent Evans  
Patty Finlay  
Marisa Fort  
Sandra L. and Reginald P. Gage  
Hanalei Tea Company, Inc.  
Jessie B. Hill  
Susan Hills  
Paul Horner  
Katherine and Rupert Hucker  
Elizabeth W. and Zachary Hulsey  
Gary Ide and Paul Kraselsky

Marilyn and Robert Isherwood  
Wendy and Thomas Kelly  
Kukui'ula Development Company  
(Hawaii), LLC  
Natasha and John Lowell  
Libby and Bruce  
Mrs. Thomas D. McCloskey, Jr.  
Mr. and Mrs. David B. McCrea  
Margaret McDermott  
Margaret and Paul J. McMahon  
Elizabeth and Anthony Morgenthau  
Diane Morris  
No Ka Oi Landscape Services  
Louise O'Brien  
Elise Forrette and Allen Orville  
Alexandra Ossipoff  
Kathrina Ostrander and Isaiah Roter  
Mayling Nuñez-Padrón and Luis Padrón  
Nancy Scanzon and David Page  
Arna Parr  
Mr. Caesar Pazmino  
Pollock Investment Advisors  
Prof. Sir Ghillean and Lady Prance  
Scarlett Presley and Fleming Crim  
Mrs. Maribeth S. Rahe  
Robert Schimmel  
Mr. and Mrs. Peter Sirois  
Susan and Henry H. Stauffer  
Patricia Steiner  
Linda M. and James R. Stolzenburg  
Leah M. and John S. Stroup  
Matthew Sullivan  
Mary and Michael Trueblood  
Christen and Christopher Turner  
Katherine and Robert Vale  
Robert Walkingshaw  
Christine and Brad Weigle

\$250 - \$499

Anonymous (2)  
Linda and Thomas Adams  
Dawn Hanna and Zachary Adams  
Sandy and Bill Adler  
Christie Love and Mark Agnello  
Josephine Alessi  
Nancy and Rick Alexander  
Patricia and Nylen Allphin  
Paula S. Applegate  
Randall L. Arnold  
Mr. and Mrs. John H. Arundel  
Melissa Azrack  
Giovanna Baldassarre  
Gillian Robert-Baldo and James Baldo  
Mr. Patrick T. Battle  
Barbara and David Beasley  
Janet and Don Bednarczyk  
John Belliveau  
Nancy Benson and James Caulfield  
Christine C. and Daniel Boesz  
Karen Leonard and Roger Bredeson  
Mary E. and Jeffrey T. Bretz  
Marina and William Brown  
Susan and Coleman Burke  
Deborah Burner

Kamilah Grey and Mark Buxton  
Ms. Carbonell and Mr. Barrios  
Naomi Matias and Michael Carlsson  
Gretchen and Rodney Clark  
Lisa and Jim Cleary  
Wyncia Clute  
Merrilee and Jesse Taylor Cole  
Chloe E. and Lawrence P. Cook  
Michael Costello  
Laura and George Crabb  
Lisa Crane  
Sandra and Donald Crocker  
Kathleen and Lawrence Crowley  
Rebecca and Philip Curtis  
Carolyn S. and Gordon K. Davidson  
Carol Ann Davis and Norman Brand  
Machi and Greg Dilworth  
LuAnn M. and Jeff F. Doerzbacher  
Karen and Jon Downie  
Douglas A. Duvauchelle  
Nancy Eaton  
Diane W. Elliot  
Joy and Warren L. Erickson  
Nicole and Steven Fagone  
Carolyn and David Fairbanks  
Patricia Fallbeck and Thomas Timmons  
Carlos Fernandez  
Don S. Finefrock  
Marguerite and Neal Fleming  
Elizabeth Flexer  
Ellen Fleysher  
Suzy and Byron Foster  
Margretta F. and Walker Gaffney  
Celia Vigil and William Galcher  
Kathy and Jim Gallucci  
Andrea Gamboa  
John Game  
Joan C. and Larry Gehrke  
Carolyn Gold and Matthew Gold  
David Goodman  
Jamie and Michael Griffith  
Barbara Gilbert Growald  
Sandee and Kenneth Haines  
Holly and Raymond Harris  
Cynthia and Robert Harris  
Ms. Beth Harrison  
Marcia and John Harter  
Nevenka and Joseph M. Harverson  
Jesse R. Hatton  
Katherine G. and Alfred P. Havas  
Lori Herman and Doug Hillman  
Ellen J. Yamaguchi and  
Edmund M. Herrold  
Julie and David H. Hodge  
Margo and Albert Hofeldt  
Lauren and Mark Hofer  
Edna and Keith Holdeman  
Carolyn and Jerome Hollander  
Susan and Bill Holliday  
Gayle O. and Roy W. Ide  
Julie Irwin  
Sharon and Mark Jillson  
Elizabeth and Ethan Johnson  
Kathleen and Mike Johnson  
Becky and Kenneth Johnson

Ilan Kempler  
Mona and David Klintstiver  
Craig Kolthoff  
Suzanne Kores and Donald Lindsay  
Michiel Niemeijer and Scott Kuester  
Lucy and Arno Kutner  
Carolyn and Bob LaMontagne  
Helen Cox and John Latkiewicz  
Mr. Richard Lee and Ms. Julie Speilman  
David and Evelynne Lennette  
Terry Leppo  
Wendy A. Levitz and Sanjiv S. Desai  
Sarah Livingstone and Linda Busche  
Joan L. and Paul C. Loizeaux  
Laurel Loo  
Ms. Rochelle Lopez and Mr. Zach Miller  
Marieke and Paul Lucas  
Mr. David Lucking  
Patrick Lunn  
Francesca Luzuriaga and Ross Larkin  
Matthew Lvoff  
Carol A. Marcotte  
Cynthia S. and John R. Hummel  
Janice S. and Russell E. Martenson  
Sallie Mason  
Sawsan F. Khuri and Mike Maunder  
Barbara J. and William H. May  
Kay W. McCurdy  
Mary and Bob McFarland  
Mr. Thomas M. McGrath  
Barbara and Laureston McLellan  
Sandra and Bruce Mehringer  
Shirley Meneice  
Vickie S. and Mark E. Meranda  
Jeanne and Julius S. Miller  
Linda and Peter Milovsoroff  
Mia Monroe  
Susan and David Monroe  
Michael Moore  
Yadira Morales  
Ronald Morgan and Stephen Weirich  
Susan Murch  
Lyle E. Nelson  
Marivi Nevin  
Anne P. and Harry Newman  
Ann and William Nitze  
Karen McAlevey-Nordt and  
John C. Nordt, III  
Robert and Gisela Norwood  
Lois C. and Peter B. Nottage  
Ms. Kashia Orlando  
Janet M. and Jay E. Peace  
George Penpraese  
Carolyn L. and Norbert Pfahler  
Neeru and Michael C. Phillips  
Photo Safari Hawaii, LLC  
Janice and Michael Plumer  
Suzanne E. and Walter S. Purvis  
Sally and David Rae  
James A. Wiseman and Diane Ragone  
P. Genie Trapp and Tom A. Ranker  
Paul B. Redman and Dean O. Berlon  
Denes Eszenyi and William Reid  
Raul R. Rodriguez  
Candace W. and Tom Sacher

Thomas and Cathryn Sakiyama  
Betty H. Sams  
Michelle Schleimer  
Steven Seto  
John Sherfese  
Julia Sherwin  
Jeff Shimonski  
Michael Shpizner  
Susannah and John K. Shubin  
Bruce and Jane E. Sigsbee  
Cynthia Simms  
James C. Skelton  
Sleeping Giant Realty  
Mrs. Sandra K. Smith  
Cheryl Stokely and Robert Moore  
Angelique Suarez  
Vivianne and Ernst Swietelsky  
Annabelle T. Takahashi  
Jane and Ken Taylor  
Mary Thompson  
Valerie and Eric Thruelsen  
Bricen Urquidi  
Florin Ursu  
Lona and David Voellinger  
Alice Volpe  
Barbara A. and James P. Walsh  
Ruth H. and David M. Waterbury  
Julie T. Watumull  
Jay P. Webster  
Rosemary Rector and Herb Weisblatt  
Mr. Gregory Welker  
Sandra K. and Robert D. Westfall  
Theresa and Peter Wiederoder  
Carol and Gaylord H. Wilcox  
Kathleen Wills  
Aaron Winshall  
Kathryn Wiser  
Janet and Thomas S. Witten  
Nancy C. Worthington  
Evelyn and Stuart Zimmerman  
Michael Zimmerman

\$150 - \$249

Anonymous (3)  
Marjorie S. and Charles S. Abbot  
Mark Agnew  
Michael and Lori Ah Tou  
Karen and Henry Alexander  
Altman Insurance Services Inc.  
Suzanne Amaducci-Adams and  
Shawn Adams  
Lolly Anderson  
Esther and Larry Apple  
Sandra L. Atkinson and Jack K. Williams  
Laurie H. and Robert F. Babb  
Susan J. Bainbridge and Bruce Baldwin  
Brenda and George W. Barnard  
Lori and Regan Barry  
Patricia G. Benca  
Louise Bendix and Nick Van Vonno  
Marjorie Brice  
Doug Britt  
Raymon M. Brown  
Patricia A. and Russell A. Bryson  
Nancy Budd and Roy Yamakawa



Amanda and Jacob Burns  
Mary and Robert Capwell  
Rina Carvajal  
Carole C. Chun  
Edith H. Clark  
Donna Clarke and John Wheatley  
Gina L. Coleman  
Alegre and Moshe Cosicher  
Kirsten and Danny Crain  
Wendy and Anthony Craven  
Nancy and Thomas Crawford  
Emily Cronin  
DeeDee and Chris Cross  
Lesley and Paul Czechowicz  
Virginia A. and Richard L. Danforth  
Diane Deen  
Christine Demello  
Deborah and John Divine  
Myles Domingcil  
Silvia Dominguez and Sheela Dominguez Mir  
Robin and Steve Drapkin  
Shirley Drevich and Richard Medlock  
Jacquelyn Dunn  
Debra Durant and John Schoendorf  
Jack and Tomy Edwards  
Mrs. Nancy Terrell Elsas  
Sheila and Steve Epler  
Charles Espinosa and Roberto Viñas  
Dorothy E. and William J. Euske  
Emory D. Evans  
Lisa and Frank Fellhauer  
Shirley and Stephen Fiske  
Mr. and Mrs. Miguel Fonseca  
Gisela Franceschi  
Ann and John P. Franzen  
Joy and Jeffrey Frelinger  
Kirsten and Rick Friedman  
Pamela Garrison  
Susan and Emile Geisenheimer  
Jan and James George  
Deborah Giles and Charles Simrell  
Jack and Janet Gillmar  
Alice Glasser and Jesse Thompson  
Perry and Joe Goldsmith  
Pauline Goldsmith  
Cherie Gossett and Donald Beaman  
Susanne J. Les and Tim E. Green  
Margaret (Garth) S. Greene  
Mary E. and James Greenwell  
Pat Griffin and Thomas Noyes  
Mr. and Mrs. H. Paul Guess  
Joanne and Frank Gumper  
Edie and Palmer Hafdahl  
Bailey Hallingby  
Miriam Harmatz  
Diane and Mark Hastert  
Martha G. and Robert B. Hazard  
Margaret Hernandez  
Barbara and Jim Herst  
Carolyn and Bryan Holland  
J. Mika Ashley-Hollinger and Stuart Hollinger  
Letitia K. and Chet Hunt  
Insurance Factors

Mary Rankin Jackson  
Sylvia M. Joesink-Mandeville  
Douglas and Sandra Johnson  
Sharon F. and Robert S. Johnson  
Jeffrey K. Jones  
Karen Kearns  
Martha Kent  
Lynn and Thomas Kevern  
Thomas Kimen  
Mr. Lawrence R. King  
Claudia Koepf  
Shelley and Robert Sternberg  
Carolyn G. and Richard C. Lindberg  
Stephen Oliva and Sarah LopezLuis  
Judi Bogdanoff-Lord and David Lord  
Carol and Fred Lorenz  
Marg and Ken Love  
Stanford C. T. Lum  
Alice and James W. Lunsford  
Macfund  
Rae and Edward P. Matthews  
Donna McCalla  
Linh and David McDonald  
Margaret and Robert L. McGinty  
Tara and Steven McNamara  
Mr. and Mrs. Gary Metal  
Zoe and Stanley Michelini  
Julia M. Morales  
Susan G. Morgan  
Eugene E. Nanay, Jr.  
Carol A. Nance  
Aimee Talbert Nardini  
Margaret Nee and Frederick Saunier  
Doria Cook-Nelson and Craig T. Nelson  
Marie and Steve Nock  
Lyle Older and Carolyn Older  
Barbara Oppe  
Dr. Carmen J. Ortiz-Butcher  
Laura Orville  
Mitchel Osman  
Linda Palmer  
Cresencia and Gregory Perreira  
Patricia P. Perry-Adams  
Jon D. Pevna  
Elizabeth M. Phillips  
Andria C. and James H. Plonka  
Gordon Poett  
Ilyse Rathet and Ronald Post  
Lazaro C. Priegues  
Professional Service of Coconut Grove LLS  
Darnney Proudfoot  
Wang Zhen and Yang Qian-kun  
Adair and Michael Reeve  
Lisa Remeny  
Michael Rinaker  
Tami Rollins  
Leola C. and Russell K. Rosendaal  
Carla and Robert Rugeroni  
Myra and Paul Russell  
Lillian and Rene Sagebian  
Martha Sanger  
Vivian Santiago-Pagan  
Yvonne and Stephen Schmergel  
Ann Schmidt

Stephanie and Kenneth Schwartz  
Maria and David Schwedel  
Robin and Ned Selfe  
Marguerite Hoyt and Kenneth Sembach  
Emma W. and Geoffrey B. Seymour  
Sharm Shannon  
Gary L. Shores  
Drs. Elizabeth M. Short and Michael A. Friedman  
Sima and Peter Siegel  
Martha Singleton and Walter Walkington  
Bernadette Y. Siy and Dane Taylor  
Joyce Slingerland and Richard Tiberius  
Stanley B. Smith  
Cheryl and Raynard Soon  
Cynthia K. and Edwin Sorenson  
Laurinda Spear and Bernardo Fort Brescia  
Ms. Starr and Mr. Hoppe  
Alison and John Steadman  
Nancy L. and A. J. Stokes  
JoEllen and Walter N. Strump  
Stella Swanson and Leslie Frank  
Cynthia J. and David J. Talaber  
Georgia B. Tasker  
Sylvia K. and James L. Thacker  
Rita and John Thibodeau  
Kim and Ruth Thich  
Lesley and Michael Tierra  
Susan and Alvin Uchida  
Tara and Jesse Van Eyk  
Scott Van Gerpen  
Vernize and Nick C. Vera Cruz  
Donna and James P. Vogler  
Andrea Volz  
Susie Voncannon  
Martha and Frank Voytek  
Tammy and Mark Waleski  
Joy Wannamaker and John Ouderkirk  
Stanley Watt  
Doris and Daniel O. Weisman  
Nina West  
Deena and Donald White  
Victoria C. Wiltsie  
Mary Kay and Greg Wise  
Elissa L. and Albert E. Yellin, M.D.  
Chris Zuleeg

\$50 - \$149

Anonymous (5)  
Betsy Abert  
Julie and Charles Adams  
Paktrocia Adams  
Alan Akana  
Jenny Allen and Bob Spies  
Lindsay M. and David Allison  
Ibbie W. Al-Shamma  
Gaylene and Leonard C. Altman  
Matthew Altman  
Patricia Anawalt  
Margaret L. and Robert W. Andrews  
Susan and Gary Andrews  
Angela Headley Island Art  
Myriam Angulo  
Karuna-Grace Anurak

Azade Ardali and Robert Covington  
Dulce Arguelles  
Betty M. Armstrong  
Margaret Armstrong  
Diana Arntz  
Raymond R. Ashman and David D. Burgess  
Candace Boxer and Greg Askew  
Vicki and Steve Atwater  
Judy and Raleigh Awaya  
Sharon and Richard Ayres  
John Bach  
Dr. Jim Back  
Annie Baik  
Carolyn Scagel and Blaine Baker  
Bonnie Baki  
Susan Baranowski and Dale Rienart  
Lynn K. Barker  
Terrie Barley  
Patricia Bases and James Geyer  
Mr. and Mrs. Matthew Beall  
Lisa and Todd Beatty  
David Becker  
Deborah E. and Donald L. Beduhn  
Charles Belin  
Judy Bell  
Rita and Donald S. Belts  
Bob Benson  
Brian Berg  
Daniel N. Bernstein  
Barbara and Richard Berry  
Elizabeth and Luther A. Bertrando  
Dr. and Mrs. Ernest Beutel  
Timothy Bishop and Nathan Francisco  
Ann Bjork  
Barbara Black  
Lori Black  
Michelle M. and Randall C. Blake  
Ellen and Nicholas Blonder  
David Blumberg  
Janet Blumberg  
Gerre L. and Lyle C. Boardman  
Sharon Wilson and Van Bobbitt  
Carol Bockman  
Karen and John Bocquin  
Martha A. Boes  
Jane and Tom Bogar  
Barbara Bonds  
Michael Bostwick  
David V. Boucher  
Fred Bove  
Renee Kosslak and Ben Bowen  
Brenda R. and Robert E. Bowers  
Madeleine D. Brandli  
Faye Brenner  
Balbi Brooks  
Patricia Brooks-Servito and Philip Servito  
Mary Lou Brotherson  
Joseph Brown  
Prudence H. and David A. Brown  
Virginia Lowrey Brown  
Arthur Brun  
Nancy Ann and Terry Budden  
Carole and Craig Buhlman  
Liedeke Bulder and Dick Wright  
Sandra L. Burch

Sara Busch and John Wagner  
Kathleen Cahill  
Cecilia and William Caldwell  
Joy and Tom Canute  
Erin and Richard Carlson  
Esther Carpi  
Sharon L. Carroll and H. R. Downs  
Mary Anne and Ronald J. Casella  
Kathleen A. and Kevin P. Casey  
Casper Landscape Design  
Ric Catron  
Lucille B. and Michael Ceurvorst  
Gil Challet  
Suzanne and Nicholas A. Charles  
Norden H. Cheatham  
Emilie and C. Brandon Chenault  
Mary and R. Scott Cherba  
Kirenia Chiu and Kyle Colby  
Dorothy Ciarlo  
Blanche and Gilmore Claonan  
Anita K. Stoll and W. B. Clapham, Jr.  
Byron Cleeland  
Marilyn J. Cleghorn  
Sally Clifford  
Jeanette M. Clough  
Helen H. and David G. Coleman  
Stephanie and Paul K. Comstock  
Laurie and Thomas Connolly  
Carolyn Cook  
Margarete and John D. Cooke  
Michael Cortese  
Ginger Covalt  
Carol Hanson and Barry Cowan  
Steve Coy  
Patricia H. and James F. Crafts  
Laurie Craise  
Kimberly and Byron Cregeur  
Richard A. Criley  
Callie Crossley  
Beverley and Louis Cunningham  
Alan B. Curtis  
Daryl Ducharme and Casper R. Curto  
Diane Daniells  
Carrie and Jake Davis  
Nancy and Joseph Day  
Paula de Sousa  
Mary Dedeaux  
Debra and Daniel Delaney  
Diana Dietz  
Stephen L. Dilts  
Mrs. Pamela W. Dohrman  
William Dowdney  
Lois Drake  
Sheila Drews  
Christy L. and Tom Drumheller  
Carmen and Burnie Dunlap  
Beverly and Walter Durham  
Paulette Edmonston  
Patricia and Larry Egger  
Mary Epler  
Cheri Erickson  
Rebecca Erickson  
Mr. Don Evans  
Sharon Fisher and Keith Evans  
Patricia J. Evans

Betty L. Farrell  
Gerda and Eyvind M. Faye  
Roblyn Hartsfield and Art Feagles  
Rose and Al Ferguson  
Virginia Ferguson  
Tina Ferrato and Mark Furr  
Arlene Ferris  
Barbara and Glenn Finch  
Jennifer Firmin  
Marilyn Fisher  
Jo B. and Emil D. Flynn  
Beth E. and Bruce K. Fong  
Pearl Fong  
Ms. Faith L. Foss  
Randall Francisco  
Tracy Fredin  
Isaac Alvarado and Ulla Freeman  
Eleanor and William H. Freudensten  
Samuel Friend  
Rebecca K. and Richard W. Fries  
Beverly Frost  
Jeanne L. Frost  
Gary Fuller  
Mark A. Fulmer  
Wilma and Behrooz Garabaghi  
Judith Gardner  
Susan C. and Robert J. Gardner  
Jill L. Gaspar and J. Ann Carr  
Terri and Lee Gately  
Christine and Lloyd Geggatt  
Heather George and Scott Valor  
Kathy Mayer and Barney Gerber  
Marjorie F. Gifford  
Dena Gitterman  
Betty Goddard  
Barbara K. Godridge  
Joseph Gogatz  
Shannon Neil and Clay Goldberg  
Meghan and Matthew Goodale  
Sharon Gottfried  
Toby D. and William G. Gottfried  
Albert Gough  
Gail K. and Charles L. Gray  
Dorothy and Harold Greene  
Maureen and William Gregg  
Janet and Wylie Greig  
Elaine P. Grever  
Roberta Griffith  
Thomas B. Grollman  
Julie and Kevin Grove  
Phyllis M. and Thomas B. Guard  
Stephanie Guest and Richard Ellis  
Robert J. Gustafson  
Michael C. Gustin  
Robert J. Guzman  
H.B. Tollette & Associates  
Yvette and William H. Hackett  
Naomi and Dave Hamamura  
Raven Hanna  
Mary and Richard Hansen  
Mike Harismendy  
Michelle Harrington  
Stephen C. Haus  
Rosemarie and John T. Hawke  
Mary and Robert Hawkins



Frank O. Hay, Jr.  
Margaret Janne Hayward  
Marianne P. Howard and Rufus K. Hedrick  
Gwendolyn and Christopher Hendry  
Neil and Barbara Henrichsen  
Casady M. Henry  
Kristen Henry  
Giseon Heo  
Gale Heringer-Brock and Steve Brock  
M. Kathleen Herron and Wendy Culver  
Lauralee and Alan Hershey  
Hesse Flooring  
Caryn and Gordon Hetherston  
Margery L. Hexton  
Robert Heyn  
Steven Hiaasen  
Steve Hickman  
Dotty and Bryan Hicks  
Karin Wares and Steven Hildes  
Brad Hise and John Downey  
Jane Ho  
Lynn M. Hodgson  
Susan and Tom Holling  
Sheila Honeywell  
Emmitt House  
Linda V. and David P. Howell  
David Hubbard  
J. Donald Hughes  
Jodie and Frans Huijing  
Kaaaina Hull  
Marguerite Hunsiker  
Karen Huntsberger  
Stephen Hurtz  
IBM  
Chloe and Peter S. Illoway  
Evelyn F. Ireland  
Diane Isonaka and David Galas  
Sarah A. Isto  
Robert Jackson  
Eric Jacobshagen  
Eleanore and Ronald Jacobson  
Lucretia N. and Michael Jaye  
Gordon Jaynes  
Leslie Fleeman and Davis Jeffries  
Beverly Jenkins  
Cynthia P. and Lynford M. Johnson  
Larry Johnson  
Pauline A. and Russell M. Johnson  
Sarah and Barry Johnson  
Margaret and William Johnston  
Claiborne S. Jones  
Frances B. and Vincent K. Jones  
Steve Junk  
Eelekoa Kanamee  
Stella and Toshio Kaneko  
Mr. and Mrs. Solomon K. Kanoho  
Sherry Kapaun  
Spencer L. Karpf  
Mildred P. Kattan  
Bronwen and Gregory Keighery  
Mr. and Mrs. Ralph Kelsey  
Gloria Kennedy  
Beverly and Randolph Kentfield  
John Kitzmiller  
JA and EJ Klein  
Ilene Kleinsorge  
Ann and Robert Klose  
Christine Kobayashi  
Kathleen and Kenneth Kokron  
Mary Kopitzke and Robert Kolosky  
Jennifer Krebs and Sean Combs  
Rose Krebs and Ace Hodgkin  
Barbara Kroesch  
Lizabeth and David Kukulka  
Ben Kulia and Harry Ung  
Maryanne W. and Charles Kusaka  
Julie Hayward and Daniel Kushner  
Angela and Bruce Kuyper  
Kay T. and Vernon J. LaBau  
Helen and John LaGourgue  
Blossom and Jones Lai  
Mr. and Mrs. Marc Laidlaw  
Kathleen Lamoree  
Kristin A. Lamson  
Carol and James Landis  
Joan Langan  
Jeanne Lange  
Caroline Langen  
Stephen Langham  
Linda C. and Christopher M. Laning  
Kim and Bob Larsen  
Phyllis K. Lathrope  
Robert Laugen  
Martie Law  
Jennifer Lax  
Valerie and David Lee  
Mary Ann Leer and Jules C. Resnick  
Judy and Robert Leet  
Lorraine Leiser and David B. Taylor  
Christine and Jay Lewis  
Nancy D. and Tony Lilly  
Holly Lindsay  
Ritta Lipmanowicz  
Mary and Michael Lock  
Andrea and Donald Lockwood  
Gertrude Long  
Brenda and Nate Lord  
Jacquelynn Lott  
Diana Loynes  
Arlene Lum  
Sondra Lund  
M. Dolores and Lawrence Lundbom  
Clair Sasaki-Lundgren and Donald Lundgren  
Joan F. Luzney and Renee Lippmann  
Rosa Lydia and Serge Larve  
Claire Lyons  
Mary L. and David N. Maas  
Melody MacKenzie and Branch Lotspeich  
Marguerite F. Maguire  
Laurine J. and Glenn K. Makaneole  
Patricia and Robert Malcolmson  
Patty and Mike Malone  
Sue and Adrian Mangiboyat  
Wendy and Rudy Manheim  
Carolynne Manka  
Lois Markovich  
Nikola Filby and Richard Marliave  
Mary Marnell  
Sharon C. and George Marshall

Jane K. and Edward H. Marti  
Ann B. Martin  
Martha E. Martin  
Mr. Paul Martin and Ms. Annie Pixley  
Camilla C. Matsumoto  
Pamela Mattson  
Mauna Ala Hiking Club  
Elizabeth and Keith W. Maurer  
Mary G. and Robert H. Mazur  
Somia Mazurek  
Kimberly and Mark McAtee  
Arva M. and Robert H. McCabe  
Tort and Mac McCarter  
Mark McCartin  
Marilyn K. McComas  
Lynn McCormack  
Mark McElheney  
Patricia McGuigan and Richard Bush  
Marcia and Peter McIntire  
Cynthia McLean  
Janice Potter and Robert Meadows  
Rosemary and Roger Mein  
Katherine Merrill  
Nancy J. Merrill  
David Meyer  
Mid-Pacific Institute-Elementary  
Naotoshi Mikasa  
David N. Milbrath  
Carolyn Miller  
Kristina Laidlaw and Scott Mincemoyer  
Elaine Mirkin  
Jan and Dan Miyamoto  
Sandy and Bruce Mizer  
Al and Edie Moe  
Mokihana Pest Control, Inc.  
Glenn Molander  
Joyce and Keith Montag  
Patricia Moore  
Vivien and Raymond Moreno  
Ann Mori  
Gayle and Alfred Morin  
Min and Ronald E. Mossman  
Janet Stoneking and Thomas Mozer  
Roberta Faeh and Roger Mullenhour  
Patricia Munsell  
Michael J. Murakoshi  
Randall Murch, Ph.D.  
Susan Murphy  
Susan Murray  
Jynelle and Kyrod Myatt  
Jane E. Koehler and Stephen X. Nahm  
Cynthia and Patrick Napolitano  
Rajeev Narayan  
Laura Nash and Tom Beale  
Barbara E. Neal  
Eve Neibel  
Neal Nelson  
Sharon Lee Neville  
Carolyn M. Nicholson  
James Nishida, Jr.  
Roberta Nitkin and Eric Richer  
Sara A. and Thomas P. Noland  
Dawn Nuschler  
Sandra S. and Robert F. Nyvall  
Theodora and Howard Oberlander

Deanna and Brendan O'Donnell  
Molly Gray-O'Grady and John O'Grady  
Noreen Ohai-Daniels and Paul L. Daniels  
Virginia Olsen  
Monika and Peter Ot  
Cherri M. Pancake  
Sandi and Dick Pantages  
Patti Pantone  
Patt E. Panzer and Carson Zullinger  
Nancy and Carlos Pardeiro  
Peter Parry and John Cox  
Judith Parsons  
Antonia and Stephen Paulsen  
Margaret Carver and Vincent Pecoraro  
Cristy and Ronald Peeren  
Thomas R. Perry  
Michael G. Peskura  
Susan and Robert E. Peters  
David C. Peterson  
Kathleen Pickett  
June Pinnell-Stephens and Dennis Stephens  
Angela and Michael Plambeck  
Inge Pott  
Nancy and Steven Poulos  
Ruth N. and William R. Poulton  
Rodney Powell  
Deborah and Charles Pratt  
Dianne Pratt  
Robin and Sam Pratt  
Leslie Prosen and Jonathan Prosen  
Lynn Ransone-Fong and Timothy C. Fong  
Patricia and Charles Raven  
Joan Berde and Francis Reckard  
Lynn and Donald Reed  
Angela Reuser  
Evonne Revitt  
Sherrie Rheingans  
Sally H. Rice  
Esther and Monroe Richman  
Cynthia Dumser and George Richmond  
Vanessa Rickerby  
Bill Rickman  
Sharon Ridge  
Rebecca and Richard Ripley  
Chris Robbins  
Don C. Roberts  
Ursula and Tom Roberts  
Susan E. Robertson  
Barbara M. and S. W. Robeson  
Gloria Rock  
Kitty Roedel  
Beverly and Don Rohrer  
Mr. John Romain  
Karen and Kendyl Roman  
Johan Ronningen and Dennis P. Souza  
Myron Rothbart  
Barb and Bob Ruault  
Linda B. and Edilberto S. Rubia  
Nancee Rush  
Judy Sahn  
Saiva Siddhanta Church  
Mr. and Mrs. Bruce K. Sakimae  
Judy Saronitman  
Ananda Satara and Paul Satara Bever

Lynn M. Sato  
Michiko Sato  
Elizabeth Scamahorn  
Paula Schimpf and Paul Reinarman  
Lula and Carl Schmid  
Frederick W. Schneider, III  
Sarah and Paul Schoberg  
Marsha Schoene-Langohr  
Trish Schooley  
Barbara and John Schroder  
Claire E. Taylor and Charles G. Schulz  
Laura Schumacker  
Gerald Schwertfeger  
David P. Scott  
Isabelle B. and Michael A. Scott  
Eldean and Phil Scott  
Lena and Mark Sell  
Ursula Selwood  
Dulce D. Shafer  
Annette and Siegfried Shalles  
Cathy L. M. Shanks  
Sharon and Charles Shedd  
Debra L. Shenk  
Marcia and Bob Sherry  
Terra and Richard Shideler  
Ann Shinsato  
Mary Shuford  
Deborah Shure and Aymarah Robles  
Susan Bryde-Siegel and Daniel Siegel  
Alexis Simendinger  
Kris Wilson Slack  
SMI Landscaping Architecture, Inc.  
Barbara C. Smith  
Betty Smith  
Barbara and Kenneth Smith  
Laurie Smith  
Mary and Lonnie Smith  
Katherine and Phil Smith  
Eleanor Snyder  
Sterling Snyder  
Perla and Tony Soto  
Gloria Sousae  
David S. Spain  
Ginni and David Spencer  
David St. John  
Standard Insurance Company  
Allison Stanley  
Fredrick and Marilyn Stark  
Joseph Robert Starkley  
Noreen and Lee Steinmetz  
Jane and David Stern  
Judy and Will Stevens  
Suzanne J. and Henry S. Stolar  
Michal F. Stover  
Liz Strauss and Mark Hughes  
Kathleen L. Street and Solomon K. Hoopal, Jr.  
Patricia and Kendon Stubbs  
Mary A. and David Stubenberg  
Surface Design, Inc.  
Ms. Margaret Surwilo  
Karen and David Swearingen  
Kay and Clifford Sweet  
Connie Swyers and Arnold Hergan  
Mieko G. Takabayashi

Sandra Takaezu  
Rosalie A. and Edward S. Tank  
Carol T. Tanner  
Mark Tanner  
Joanne Bloom and Thomas Tanzer  
Peter C. Tausend  
Terra Nova Travel, LLC  
Darby Lynn Thompson  
Helen Ladd Thompson  
Teresa Tico  
Mr. and Mrs. Richard A. Tilghman  
Jill Tillinghast  
Vivian Tinner  
Sylvia Titchener  
Linda Tomlinson  
Chris and David Towne  
Marilyn Townsend  
Marshall Traster  
Melissa Tremblay and Owen Prentice  
Judy Tsuei  
Barbara Turecky  
Laurita P. and Albert Turner  
Mish Tworowski and Joseph Singer  
Mary Umehara  
James Underhill  
Katherine Valier  
David Vandervoet  
Gerard V. Vernose, M.D.  
Jean Vieth  
Jan Vitus and Bruce Womack  
Marina Volkua  
Tamara Vook  
Marie Walkiewicz  
Margaret L. Wardlaw  
Diana Warry  
Cathy Moratto and Richard Waxman  
Linda J. and Robert S. Weiner  
Champa and Robert Weinreb  
Devrin Weiss  
Marlene Wells  
Robert E. Wells  
Janice R. and David Welsh  
Kathleen A. West-Hurd and Steven Hurd  
Helene S. and David Wheeler  
Mary Whitehill  
Horace G. and John M. Whitlock  
Peggy and Leslie Wiedemann  
Jody and Richard Williams  
Marsha and Wayne Williams  
Mary Williamson  
Virginia B. Wojno-Forney  
Miok and Mark Wolbers  
Nancy Wolf and Doug Street  
Pearl Wollin  
Mr. Bruce Womack and Ms. Jan Vitus  
Robert Yamada  
Richard Yaremko  
Maile Yawata  
Cathleen Yedinak  
Roy Y. Yoneji  
Darcie A. Yukimura  
James K. Zaima, Jr.  
Marleigh and Dan Zimmerman  
Paula and John Zimmerman  
Barbara and Michael E. Zins



FOUNDATION SUPPORT

Acacia Foundation  
Alexander & Baldwin Foundation  
American Samoa Government  
Atherton Family Foundation  
Bank of Hawaii Foundation  
Berenice R. Spalding Charitable Trust  
Catherine S. Rodriguez Family Foundation  
Charitable Gift Fund  
Charles Schwab Corporation Foundation  
Cobb Family Foundation, Inc.  
Colcom Foundation  
Cooke Foundation, Limited  
County of Kauai  
Cynthia and Merrill Magowan Family Foundation, Inc.  
Donald Lee and Sally Steadman Lucas Foundation  
East Bay Community Foundation  
Edwin W. and Catherine M. Davis Foundation  
Estate of Robert F. Miller  
First Hawaiian Bank Foundation  
Foster Family Foundation  
Gaylord & Dorothy Donnelley Foundation  
GE Foundation  
Goodale Family Fund  
Green Family Foundation  
Grove Farm Company Foundation  
Growney Family Fund  
Hawai'i Community Foundation  
Hawaii Tourism Authority  
Johnson Ohana Charitable Foundation  
Laila Twigg-Smith Art Fund  
Kaua'i Island Utility Cooperative  
Koaniani Fund  
Malott Family Foundation  
Marisla Foundation  
McInerny Foundation  
Miami Foundation  
Miami-Dade County, Florida  
Michael and Diane Rosenberg Family Foundation, Inc.  
Nelson Family Trust  
North Kauai Fund  
'O'io Fund  
Pryor Foundation  
Qualcomm Charitable Foundation  
Raven Foundation  
Relgalf Charitable Foundation  
Ronald P. & Susan E. Lynch Foundation  
Rotary Club of Poipu Beach Foundation  
Schmit Family Trust  
Schwab Charitable Fund  
Spouses of the Senate  
Stamps Family Charitable Foundation, Inc.  
State of Florida  
Strong Foundation  
Taniguchi Deane Family Foundation  
The Batchelor Foundation, Inc.  
The Ceres Trust  
The Clorox Company Foundation  
The David and Lucile Packard Foundation  
The Dayton Foundation  
The Donald R. Logan Charitable Fund

The Eclipse Foundation  
The Garden Club of Honolulu  
The Merwin Conservancy  
The Nelson Mead Fund  
The Randleigh Foundation Trust  
The Rhoades Foundation  
The S.W. Wilcox Trust  
The Thomas S. Kenan Foundation, Inc.  
The Weathertop Foundation  
Villagers, Inc.  
VMware Foundation  
Waimakua Foundation  
Wiseheart Foundation, Inc.

MEMORIAL & TRIBUTE GIFTS

In Honor of Jenny Allen  
James Underhill

In Memory of A. E. Bullock  
Glenn and Jane Goldsmith

In Memory of Todd G. Cole  
Pamela W. Cole

In Memory of M. E. Davis  
Edwin W. and Catherine M. Davis Foundation

In Memory of Genevieve E. du Pont  
Mrs. L. W. Lane, Jr.

In Honor of Samantha Dwight  
Harriet S. and Eric P. Fraunfelter

In Honor of Timothy Dwight  
Harriet S. and Eric P. Fraunfelter

In Honor of James P. Elder, Jr.  
Margaret McDermott

In Honor of Joy and Lief Erickson  
Rae and Edward P. Matthews

In Honor of Don Goo  
Meredith Y. H. Ching

In Memory of Hobey Goodale  
Anonymous  
Patricia P. and Harlan C. Amstutz  
Bank of Hawaii Foundation  
Pamela W. Dohrman  
Glenn and Jane Goldsmith  
Pat Griffin and Thomas Noyes  
Mary and James W. Griffith, Jr.  
Mildred P. Kattan  
Mrs. L. W. Lane, Jr.  
Stanford C. T. Lum  
Mrs. Thomas D. McCloskey, Jr.  
Jo Anne and G. James McDowall  
Realty Associates Advisors LLC  
Ronald P. & Susan E. Lynch Foundation  
Karen R. Sakimae  
Cathy L. M. Shanks  
Karen Silva  
Barbara C. Smith

John D. Weeden  
Georgene E. and Edwin Y. Yamada  
Darcie A. Yukimura

In Memory of Gordon Haas  
Jay P. Webster

In Memory of Rick Hanna  
Eve and Martin Cole  
Pat Griffin and Thomas Noyes  
Mildred P. Kattan  
Ronald P. & Susan E. Lynch Foundation  
Annabelle T. Takahashi  
Georgene E. and Edwin Y. Yamada

In Memory of Essie Helsel  
Jane Best

In Memory of Frank W. Johnson  
Cathleen Yedinak

In Honor of Tom Kenan  
Rajeev Narayan  
John D. Weeden

In Honor of Doug Kinney  
Betty H. Sams  
Jane Woodward

In Honor of Liz Kinney  
Betty H. Sams  
Jane Woodward  
In Honor of Martha Joynt Kumar  
Alexis Simendinger

In Honor of Sondra Lund  
Cheryl Uso

In Honor of Merrill Magowan  
Donald Lee and Sally Steadman  
Lucas Foundation  
Linda Palmer

In Honor of Betsy K. Matthews  
George G. Matthews

In Memory of Christy Mayfield  
Blanche and Gilmore Claonan  
Naomi and Dave Hamamura  
Kathleen and Herbert Hong, Jr.  
Rosalinda and Michael Julian  
Susan A. Kanoho  
Carol A. Nance  
James A. Wiseman and Diane Ragone  
Taniguchi Deane Family Foundation

In Memory of Anne Moncrief  
Anonymous  
Lisa and Todd Beatty  
Carrie and Jake Davis  
Beth E. and Bruce K. Fong  
Glenn and Jane Goldsmith  
Kristin A. Lamson  
Marlene Wells

In Memory of Mollie Moore  
Anonymous

In Honor of Bob Murch  
David Edgington  
Richard Hubbard  
Bruce Rollin  
Mark Somner

In Honor of Amanda Paley  
Harriet S. and Eric P. Fraunfelter

In Honor of Elizabeth Purnell  
Harriet S. and Eric P. Fraunfelter

In Honor of Mary Purnell  
Harriet S. and Eric P. Fraunfelter

In Honor of Donna M. Revard  
and John Koon  
Hau'oli and Chipper Wichman

In Honor of Kathy Scarborough  
Gayle O. and Roy W. Ide

In Memory of Edwin A. Seipp, Jr.  
John D. Weeden

In Memory of Reva V. Stiglmeier  
Arlene Lum

In Honor of Nancy Stockert  
Helen Cox and John Latkiewicz

In Honor of Barbara Sweet  
Jane Woodward

In Honor of Cyrus. B. Sweet  
Jane Woodward

In Memory of Nancy Teshima  
Georgene E. and Edwin Y. Yamada

In Honor of Gaetano Vasta  
Jill Tillinghast

In Honor of Charles R. Wichman  
Hau'oli and Chipper Wichman

In Honor of Hau'oli and Chipper Wichman  
Ladeen Miller

In Honor of Jeanne R Wichman  
Hau'oli and Chipper Wichman

In Honor of Jonathan Wichman  
Hau'oli and Chipper Wichman

In Honor of Michael and Cheri Wichman  
Hau'oli and Chipper Wichman

In Honor of Wendy J. Wichman  
Hau'oli and Chipper Wichman

GIFTS-IN-KIND

Acrylic Nails  
Agustan Wines  
Alashan Cashmere  
Alaska Airlines  
Allison Langer Photography  
Always Flowers  
Angie's Vanilla  
Aunt Lilikoi Passion Fruit Products  
Bacardi  
Barefoot Cellars  
Baskets by Sue McConnell  
Carol Bennett  
Birdie's Cafe & Pub  
Blue Ginger  
Blue Knight Services Hawaii, Inc.  
Bull Shed  
Catstudio  
Richard A. Cellarius, Ph.D.  
Cocobelle  
Coconut Grove Gallery  
Jan Cohen  
Pamela W. Cole  
Costco Wholesale  
Country French  
Evelyn de Buhr  
Debbie Katz, Inc.  
Dogearred, Inc.  
Dolce Italian  
Anne G. Earhart  
Echo Designs  
Jessica Elliot  
Enigma by Bulgari  
Escapada  
EVOO Bottega  
Fifty Eggs  
Fine Line Furniture  
Flora Bella  
Fontainebleau Florida Hotel, LLC  
Four Seasons Hotel  
Robin and Gary Fox  
Sandra L. and Reginald P. Gage  
George's in the Grove  
Pancho Graham  
Grand Hyatt Kaua'i Resort & Spa  
Great Plains Conservation  
Gretchen Scott Designs  
Hachette  
Hat Attack  
Hawaiian Palm Baskets  
Hirni's  
Holo Holo Charters  
Michael P. Hoppe  
Hui o Laka  
Hukilau Lanai  
In2 Design  
Ipanema  
Isabel Riera  
Jaguar Hospitality Group  
Jellycat Inc.  
Marie and Dale Johnson  
Josselin's Tapas Bar and Grill  
Kai Fragrance  
Kalaheo Coffee Co & Cafe

Kalaheo Wellness Center, LLC  
Kauai ATV Tours  
Kauai Beer Company  
Kauai Island Tours, Inc.  
Kayu design, Inc.  
Keoki's Paradise  
Douglas McBryde Kinney  
Kintaro Japanese Restaurant  
Koloa Rum Company  
Merle and Keith Koplan  
Kristine Michael  
LAFCO New York  
Lynda L. LaRocca  
Lasso The Moon, Inc.  
Leon's Wine & Liquor Center  
Letarte Swimwear  
Lokal  
Mandarin Oriental  
Mandolin Aegean Restaurant  
Marilyn Schiff Jewelry  
Mary Louise Designs, Inc.  
Merriman's  
Michael's Genuine Group  
Linda and Peter Milovsoroff  
Judy Mince  
Moreland Arch & Sustainable Design  
Mudpie  
Natural Impressions  
Newslink  
Oishi Thai  
Olympic Cafe  
Outfitters Kauai, Ltd.  
Hélène M. M. Pancoast  
Peace Love World  
Petra Soy Candles  
Plantation Gardens Restaurant & Bar  
Poipu Bay Golf Course  
Poipu Skyline Adventure  
Princeville Prince Golf Course, LLC  
Pubbelly  
Quiksilver  
Ramona LaRue  
Reed & Barton  
Rescue Services  
Andrea Ruggeri  
Krystal Sasso  
Shake Shack  
Sheraton Kauai Resort  
St. Regis Princeville Resort  
Staglin Vineyard  
Strada in the Grove  
The Beauty Shop & Manicure Bar  
The Hanalei Dolphin Restaurant  
The Tavern at Princeville  
Titanic Brewing Company  
Torano Cigars  
Tortilla Republic  
Tortuga Bay at Puntacana Resort & Club  
Ugo Di Roma Hair Salon & Boutique  
George Varkarakis, Ph.D.  
Vicky's Fabric  
Wax Mee Spa  
Weld Tech  
Kawika Winter  
Wayne Zebzda



# THANK YOU

## TO OUR 2014

# VOLUNTEERS

Our thanks to all of our amazing volunteers who generously gave their time and service to NTBG throughout 2014.

Patty Adams  
Phyllis Albert  
Patrick Aldrich  
Stacey Aldrich  
Nancy Alexander  
Rick Alexander  
Star Angelei  
Laura Arnold  
Greg Askew  
Grace Eleanor Baird  
Bill Barnard  
Brenda Barnard  
Jennifer Bauman-Roy  
Carole Beierwaltes  
Marty Beierwaltes  
Fossie Bergum  
Kathy Bergum  
Rod Bergum  
Roger Bessy  
Hannah Beutler  
Teruko Bierly  
Susan Billie  
Biodiversity Trail Volunteers  
Kimberlin Blackburn  
Shawna Blackford  
Audie Blevins  
Carol Bockman  
Ted Bockman  
Jeanette Bonnilla  
Kayla Bonnette  
Jim Boring  
Candace Boxer  
Joan Boxhall  
Ken Boxhall

Mary Lou Bradley  
Diane Brentenfoldt  
Dorvan Brentenfoldt  
Jan Breyer  
Marcela Brimhall  
Maria Briones  
Neil Brosnahan  
Bill Butler  
Robert Cable  
Cecilia Caldwell  
William Caldwell  
Cambell University  
Dylan Case  
Beano Castello  
Austin Chang  
Seth Chazin  
Adam Chazin-Gray  
Rachel Chazin-Gray  
L. Chiny  
Blanche Claonan  
Robin Clark, Sr.  
John Clark, Sr.  
Betty Clifford  
Gordon Coates  
Hazel Coates  
Kathleen Cooper  
Isabelle Coppinger  
Alakai Correa  
David Cowell  
George Crabb  
Laura Crabb  
Sally Cravens  
Natasha Daniels  
David Dauterman

Shirley Dauterman  
Aneesa Davenport  
Katy Davidson  
Billie Dawson  
Hope DeMarco  
Richard DeMarco  
Andrew Denny  
Cameron Denny  
Ethan Denny  
Mathew Diendorf  
Aaron Dilliner  
Pam Dohrman  
Aaron Domingcil  
Wendy Douglas  
Diane Drought  
Deborah Duda  
Rachel Durkan  
Blu Dux  
Marianne Dwinell  
Sarah Eisenreth  
Ben Elgart  
Dan Elliott  
Jo Elliott  
Marty Ellis  
Kate Erickson  
Eduardo Estrada  
Sue Fafard  
Carolyn Fairbanks  
David Fairbanks  
Patricia Fallbeck  
Ken Fasig  
Dixie Fenke  
Tina Ferrera  
Daniel Finchum

Patsy Finney  
Candace Firth  
Carl Firth-Markley  
Laura Firth-Markley  
Pat Foster  
Susan Fridley  
Rebecca Fries  
Reginald Gage  
Sandra Gage  
Nicole Galase  
Shaunna GaNun  
Adrianne Garska  
Rosario Garza  
Robert George  
Barney Gerber  
Jann Gibbs  
Lock Gibbs  
Alicia Gilbert  
Bill Gilbert  
Cynthia Gilbert  
Pat Gillespie  
Rick Golba  
Jane Goldsmith  
Kawika Goodale  
Donna Gray  
Bob Greene  
Melissa Gregory  
Sydney Greyson  
Pat Griffen  
Emory Griffen-Noyes  
Ken Groen  
Lois Groen  
Cheri Grousset  
John Grunewald

Bill Hackett  
Yvette Hackett  
Kathy Hadwin  
Leinaala Hall  
Carol Hamamura  
Samantha Hamilton  
Hanalei Elementary School  
Sue Hansen  
Diane Hartman  
Michele Hartmann  
Hau'ulu Elemntary School  
Hawai'i Youth  
Conservation Corps  
Margery Hexton  
Giffin Hill  
Edna Holdeman  
Keith Holdeman  
Susan Holling  
Tom Holling  
Herbert Hong  
David Hubbard  
Karen Huntsberger  
Howard Hurst  
Julie Irwin  
Greg Iten  
Cindy Iwalani  
Hayley Jackson  
Manuel Jaramilo  
Justine Jasper  
Howard Jennings  
Laura Jennings  
Edwin Daniel Johanknecht  
Ruth Johnson  
Nicolle Jones  
Russ Josephson  
Holly Kaiakapu  
Nadia Kaley  
Kainani Kaluna  
Lia Kaluna  
Shawn Kanahale  
Stella Kaneko  
Kanuikapono Public Charter  
School  
Kanuikapono School  
Coleen Kasmerek  
Kauai High School  
(Interact Club)  
Kauai Invasive Species  
Committee  
Freddie Kauffman  
Kawaikini New Century Public  
Charter School  
Jeanette Keck  
Keiki o ka 'Āina Volunteers  
Daniel Kelekoma  
Jarrid Keller  
Dylan Kelly  
Stephen Kelly  
Kelly Kelsey  
Richard King

Jessica Kirkpatrick  
Laurie Kirkpatrick  
Megan Kohnfelder  
Loren Kohnfelder  
Cindy Koja  
Justin Kondrat  
Justine Kondrat  
Keith Koplan  
Merle Koplan  
Georgette Kopp  
Savitri Kumaran  
Adam Labuen  
Bill Laidlaw  
Lucia Laidlaw  
Cynthia Lane  
Joan Langan  
Sally Lange  
David Leopold  
Noel Liddell  
Limahuli Preserve Rare Plant  
Restoration Volunteers  
Lindsay Lloyd  
Elise Lockton  
Ioane Lopes  
Marvin Lopez  
Grace Lord  
Jo Ann Lordahl  
Ginette Lorence  
Victor Love  
Diona Loynes  
Sondra Lund  
Justin Lyon  
Arlene MacPhail  
Kathi Maddox  
Joshua Manini  
Chris Manlove  
Lucas Marillo  
Amy Markel  
A. Martin  
Christina Martiney  
Paul Massey  
Vanessa Massoud  
Kathy Mayer  
Donna McCalla  
Bob McGinty  
Margaret McGinty  
Susan McKenzie  
Cindie McMahon  
Terry McMahon  
Dave Meissner  
Genie Meissner  
Nancy Merrill  
Fred Meyer  
Barbara Miller  
Al Moe  
Edie Moe  
Marilyn Moen  
David Montgomery  
Moonlight and Music  
Volunteers

Suzanne Morris  
Linda Lee Murphy  
Katherine Muzik  
Tom Myers  
Kanoa Nabeshima  
Laura Nash  
Dave Neidert  
Susan Neidert  
Jan Neilsen  
Karen Newton  
Ilana Nimzi  
Steve Nishimura  
Mary Ann Nordwall  
Northlake College  
Sandra Nyvall  
Arielle Odegaard  
Gina Odegaard  
Pacific Internship for  
Exploring Science  
Joyce Packard  
Peggy Parenti  
Bruce Parsil  
Janet Patch  
Finney Patey  
Molly Payne  
Christy Taylor-Parsil  
Rodney Pearman  
Marie Petro  
Johnathan Pinkston  
Pierre Plotkins  
David Pratt  
Ilka Priest  
Tracy Qiu  
Queen Emma Cottage  
(NTBG Volunteers)  
Mark Query  
Margaret Rangel  
Jon Reider  
Evonne Revitt  
Sherrie Rheingans  
Kathy Richardson  
Frank Richter  
Theresa Richter  
Lynette Rita  
Nancy Roberts  
Jan Rogers  
Murray Rogers  
Nancy Rolan  
Dale Rosenfeld  
Kim Rowley  
Camille Sacristan  
Tina Sakamoto  
Selma Sauve  
Caitlin Scheder-Bieschin  
Karen Schlather  
Paul Schlather  
Jane Scmitt  
Janet Seger  
Emma Lou Sharrar  
Jim Sharrar

Carol Sherman  
Tom Sherman  
Gary Shores  
Jane Shores  
Maria Shultz  
Tracy Shultz  
Ed Sills  
Cynthia Smith  
Margaret Smith  
Rachel Smith  
Sterling Snyder  
Karen Solberg  
Mitch Sowl  
Peggy Sowl  
Stormy Soza  
Renata Spackova  
Linda Spade  
St. Theresa School  
Stanford University  
Jo Steciuk  
Cory Steinmetz  
Mary Stone  
Mizu Sumida  
Yukiko Takagi  
Mike Taydens  
Christy Taylor-Parsil  
Bonita Thornsbury  
Tom Timmons  
Ronald Tjerandsen  
Kenneth Tomlinson  
Linda Tomlinson  
Marie Ulrich  
Cheryl Uso  
La'i Viernes  
Bourgi Von Trapp  
Megan Vynne  
Lillian Wadahara  
Lindsay Watanabe  
David Waterbury  
Ruth Waterbury  
Kevin Webber  
Kathleen West-Hurd  
Laney White  
Frank Whitman  
Lorraine Wichman  
Hau'oli Wichman  
Anna Wiedmann  
Donna Wilcox  
Mary Williams  
Jill Wilken  
Denese Wojcik  
Keneth Wood  
Diane Worthington  
Ed Yamada  
Georgene Yamada  
Phyllis Yount  
Wayne Zebzda  
Barbara Zins  
Mike Zins



# HOW YOU CAN MAKE A DIFFERENCE...

By supporting the National Tropical Botanical Garden

You make all the difference!! And there are so many ways that you can help NTBG grow and flourish. It's as easy as 1 – 2 – 3!

## 1. MEMBERSHIPS!

- Individual membership gifts support all the important work that NTBG does while members enjoy benefits such as free admission for self-guided tours, invitations to events, lectures, and workshops, discounts at Garden shops and our membership newsletter *The Bulletin*.
- Council of Fellows is NTBG's higher level membership group. Annual Fellows dues begin at the \$1,500 level and continue up to the \$20,000 Chairman's Circle level. Fellows are invited to participate in the bi-annual Board of Trustees meetings, one held in Hawai'i in the spring and the other in the fall on the U.S. mainland. Also, Fellows have the opportunity to participate in specially arranged international travel programs that include visits to private and public gardens.
- Matching Gifts from your workplace can double or even triple the value of your contribution. Many businesses provide matching funds to increase your support. Please contact your company's human resources department for information.
- Corporate Partnership Program is a way for businesses of all sizes to become members and support NTBG. Companies enjoy a wide range of benefits for their employees, clients and executive team, such as special tours and presentations, discounts on facility rentals and memberships, group volunteer opportunities and more.

## 2. DONATE!

- Annual Fund donations provide essential support for all of NTBG's programs in Conservation, Science, Living Collections and Education. To make a contribution, please contact Suzy May, Assistant Director of Development, at 808-332-7324 ext. 235 or [smay@ntbg.org](mailto:smay@ntbg.org)
- Planned Gifts to the Garden made through your will, a charitable trust, a gift of life insurance, or other vehicles help to ensure the future of the gardens and programs, and may further your financial goals. To discuss a planned gift, contact NTBG's General Counsel Michael J. Shea, Esq at 202-383-0161 or [mike.shea@sutherland.com](mailto:mike.shea@sutherland.com)

## 3. VOLUNTEER!

- Becoming a Volunteer is easy! Simply contact one of our locations or email our central office at [volunteer@ntbg.org](mailto:volunteer@ntbg.org). Staff will match your interests, abilities, and availability with the Garden's current volunteer needs. By becoming a volunteer you will be making a substantial contribution to preservation and knowledge of tropical plants and ecosystems. For a detailed list of volunteer opportunities, visit <http://ntbg.org/donate/volunteer.php>





<http://www.facebook.com/saveplants>



<http://twitter.com/ntbg>



<http://www.youtube.com/ntbgsaveplants>



<http://instagram.com/ntbg#>

National Tropical Botanical Garden  
3530 Papalina Rd.  
Kalaheo, HI 96741

[www.ntbg.org](http://www.ntbg.org)

NTBG is the only botanical garden chartered by the United States Congress. Established in 1964, the Garden is dedicated to the preservation and survival of tropical plants, emphasizing rare and endangered species.

NTBG is a 501 (c) (3) nonprofit corporation. We are not operated by the federal government and rely on the much-appreciated support of members and donors to carry out our mission.

Photos by: NTBG Staff and Lyle Lawson

---

# THE MISSION

---

of the National Tropical Botanical Garden is to enrich life through discovery, scientific research, conservation, and education by perpetuating the survival of plants, ecosystems, and cultural knowledge of tropical regions.

---



