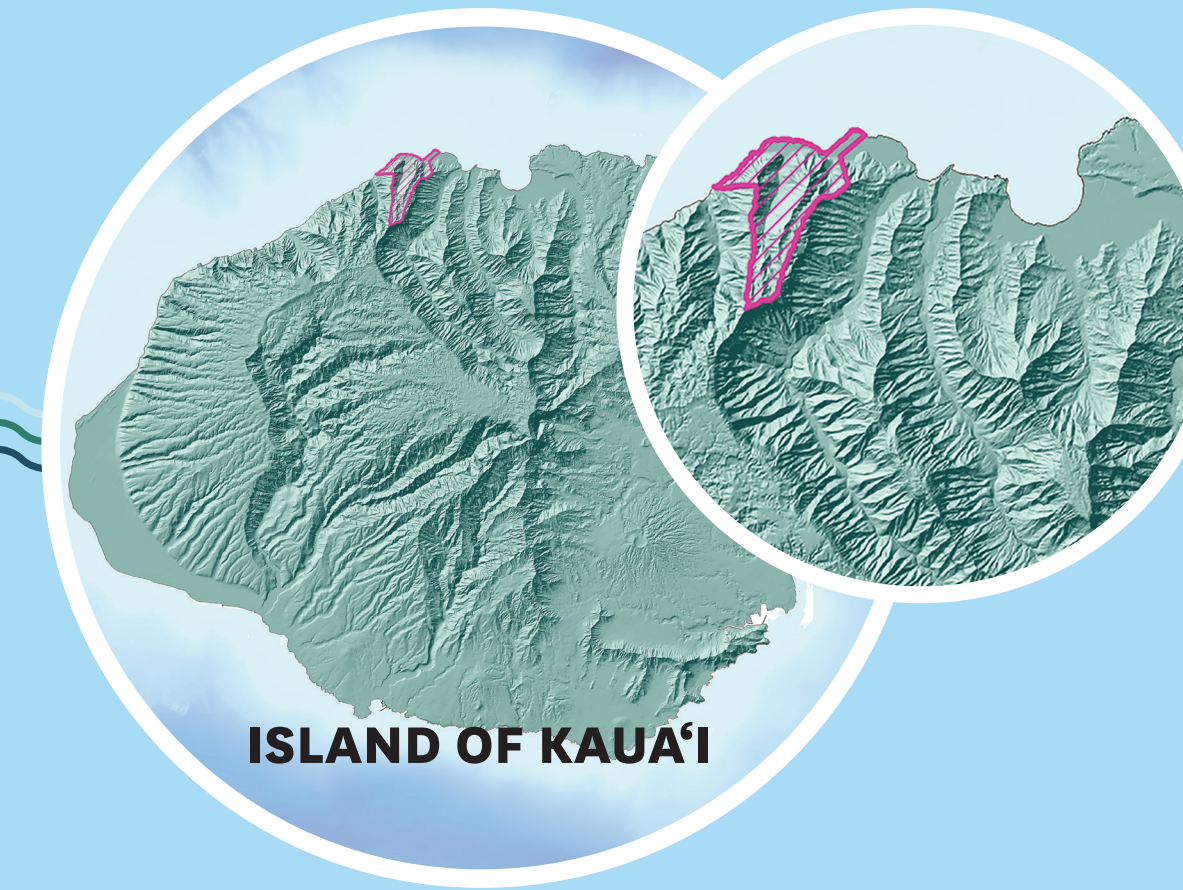


Hā'ena Ahupua'a Snapshot

LOCAL MEASURE OF MAUKA-TO-MAKAI HEALTH

The Watershed Snapshot project is a status report on ridge-to-reef health. In consultation with the Hawai'i Conservation Alliance, communities across the State identified metrics that would best define the health of their area, including socio-economic and cultural variables. In 2016, available data from researchers and resource management organizations were compiled to inform the selected metrics. Results are housed as a public resource in an online library of all related watershed-related data, and can be found at hca.maps.arcgis.com. The information is compiled as a suite of communication tools to help inform, guide, and garner support for more effective mauka-to-makai management efforts.



"THE KŪPUNA TELL US THERE IS LESS WATER IN THE STREAMS, AND THE SCIENTISTS TELL US THAT NOT ONLY IS THERE LESS RAINFALL, BUT THE SPREAD OF INVASIVE TREES MEANS THE FOREST HOLDS ONTO EVEN LESS WATER THAN THEY USED TO. WE NEED HEALTHY FORESTS TO ENSURE THAT HĀ'ENA STILL HAS CLEAN, FLOWING WATER IN THE FUTURE."

- KAWIKA WINTER, DIRECTOR
LIMAHULI GARDEN AND PRESERVE



76 DOCUMENTED SACRED PLACES (WAHI PANA/KAPU*)

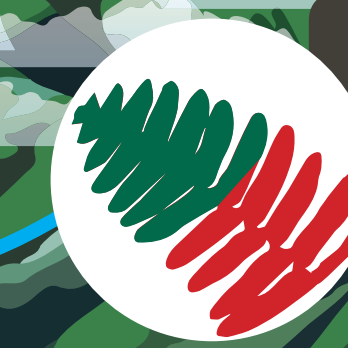
NATIVE BIRD DIVERSITY
SEABIRDS >> 6
FOREST BIRDS >> 5
WATER FOWL >> 4
SHORE BIRDS >> 3



NATIVE PLANT DIVERSITY
TOTAL >> 275
FEDERALLY LISTED >> 43
PEPP >> 9
(PLANT EXTINCTION PREVENTION PROGRAM)



43% NATIVE FOREST COVER (2011)



MĀNOA*

LIMAHULI*

MAKANA*

KE-AHU-A-LAKA*

ALMOST HALF OF THE 45 TOTAL CESSPOOLS ARE 200 FT FROM A STREAM OR SHORELINE



WELL LOCATION

RESTORED HALE

RESTORED HALE

KĒ'Ē*

MAKUA*

WATER QUALITY MONITORING STATION

"THE OLD HAWAIIANS WOULD SAY, 'HANA KA LIMA, 'AI KA WAHA.' WE NEED TO WORK TO TAKE CARE OF THIS PLACE SO THAT WE CAN CONTINUE TO FEED OUR FAMILIES."

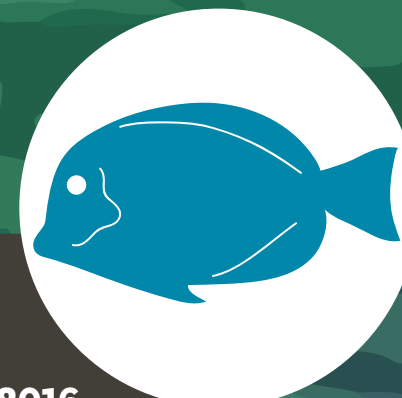
- TOM HASHIMOTO, LIVING KUPUNA

53% CORAL COVERAGE
(10%-50% DENSITY)



E HO'OMALU KĀKOU I KA 'ĀINA
(WE MUST PROTECT THE 'ĀINA)
- RACHEL MAHUIKI, KUPUNA (1913-1996)

COMMUNITY-BASED SUBSISTENCE FISHING AREA (DESIGNATION 2006)
RULES ADOPTED 2015 // MONITORING INITIATED 2016
INCLUDES THE FIRST NEAR-SHORE PU'UHONUA IN HAWAII'



TOURISTS >> ~1,000,000/YEAR



RESIDENTS >> 1,985 (2010)



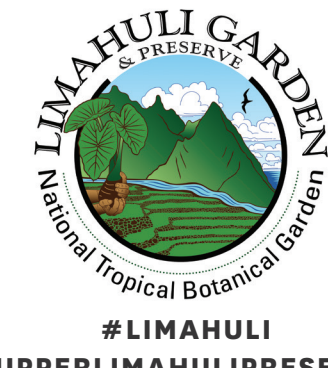
PREK-12 EDUCATION >> 600 (2015)



VOLUNTEERS >> 131 (2015)



MĀLAMA 'ĀINA CAREERS >> 18 (2016)



WWW.CONSERVATIONCONNECTIONS.ORG

#HAENALAWAIAPONO

#LIMAHULI
#UPPERLIMAHULIPRESERVE